

Product datasheet

Anti-HSPC150/UBE2T antibody [EPR9446] ab140611

Recombinant RabMAb

★★★★☆ [1 Abreviews](#) [2 References](#) [2 Images](#)

Overview

Product name	Anti-HSPC150/UBE2T antibody [EPR9446]
Description	Rabbit monoclonal [EPR9446] to HSPC150/UBE2T
Host species	Rabbit
Tested applications	Suitable for: WB Unsuitable for: Flow Cyt, ICC/IF, IHC-P or IP
Species reactivity	Reacts with: Human
Immunogen	Synthetic peptide within Human HSPC150/UBE2T aa 1-100. The exact sequence is proprietary.
Positive control	HeLa and Jurkat cell lysates
General notes	<p>This product is a recombinant monoclonal antibody, which offers several advantages including:</p> <ul style="list-style-type: none">- High batch-to-batch consistency and reproducibility- Improved sensitivity and specificity- Long-term security of supply- Animal-free production <p>For more information see here.</p> <p>Our RabMAb[®] technology is a patented hybridoma-based technology for making rabbit monoclonal antibodies. For details on our patents, please refer to RabMAb[®] patents.</p> <p>Mouse, Rat: We have preliminary internal testing data to indicate this antibody may not react with these species. Please contact us for more information.</p>

Properties

Form	Liquid
Storage instructions	Shipped at 4°C. Store at -20°C.
Storage buffer	pH: 7.2 Preservative: 0.01% Sodium azide Constituents: 9% PBS, 40% Glycerol (glycerin, glycerine), 0.05% BSA, 50% Tissue culture supernatant
Purity	Tissue culture supernatant
Clonality	Monoclonal

Clone number EPR9446
Isotype IgG

Applications

The Abpromise guarantee Our **Abpromise guarantee** covers the use of ab140611 in the following tested applications. The application notes include recommended starting dilutions; optimal dilutions/concentrations should be determined by the end user.

Application	Abreviews	Notes
WB	★★★★★ (1)	1/1000 - 1/10000. Detects a band of approximately 23 kDa (predicted molecular weight: 23 kDa).

Application notes Is unsuitable for Flow Cyt, ICC/IF, IHC-P or IP.

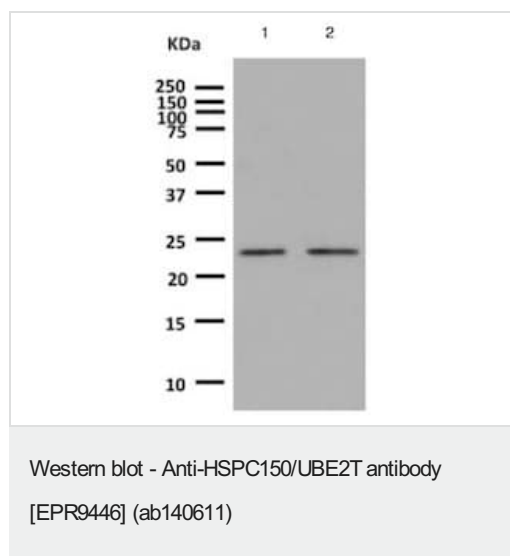
Target

Function Accepts ubiquitin from the E1 complex and catalyzes its covalent attachment to other proteins. In vitro able to catalyze polyubiquitination using all 7 ubiquitin Lys residues, but may prefer 'Lys-11', 'Lys-27', 'Lys-48' and 'Lys-63'-linked polyubiquitination.

Pathway Protein modification; protein ubiquitination.

Sequence similarities Belongs to the ubiquitin-conjugating enzyme family.

Images



All lanes : Anti-HSPC150/UBE2T antibody [EPR9446] (ab140611) at 1/1000 dilution

Lane 1 : HeLa cell lysate

Lane 2 : Jurkat cell lysate

Lysates/proteins at 10 µg per lane.

Secondary

All lanes : HRP labelled goat anti-rabbit IgG at 1/2000 dilution

Predicted band size: 23 kDa

Observed band size: 23 kDa

Why choose a recombinant antibody?



Research with confidence
Consistent and reproducible results



Long-term and scalable supply
Recombinant technology



Success from the first experiment
Confirmed specificity



Ethical standards compliant
Animal-free production

Anti-HSPC150/UBE2T antibody [EPR9446]

(ab140611)

Please note: All products are "FOR RESEARCH USE ONLY. NOT FOR USE IN DIAGNOSTIC PROCEDURES"

Our Abpromise to you: Quality guaranteed and expert technical support

- Replacement or refund for products not performing as stated on the datasheet
- Valid for 12 months from date of delivery
- Response to your inquiry within 24 hours
- We provide support in Chinese, English, French, German, Japanese and Spanish
- Extensive multi-media technical resources to help you
- We investigate all quality concerns to ensure our products perform to the highest standards

If the product does not perform as described on this datasheet, we will offer a refund or replacement. For full details of the Abpromise, please visit <https://www.abcam.com/abpromise> or contact our technical team.

Terms and conditions

- Guarantee only valid for products bought direct from Abcam or one of our authorized distributors