

Product datasheet

Anti-HSV1 + HSV2 VP16 antibody [LP1] ab110226

[22 References](#) [2 Images](#)

Overview

Product name	Anti-HSV1 + HSV2 VP16 antibody [LP1]
Description	Mouse monoclonal [LP1] to HSV1 + HSV2 VP16
Host species	Mouse
Specificity	This antibody is specific for Herpes simplex virus tegument protein VP16. This antibody will cross react with HSV1 and HSV2.
Tested applications	Suitable for: ICC/IF, IP, WB
Species reactivity	Reacts with: Herpes simplex virus, Human herpesvirus 2
Immunogen	Tissue, cells or virus corresponding to HSV1 + HSV2 VP16. HSV-2.
General notes	<p>The Life Science industry has been in the grips of a reproducibility crisis for a number of years. Abcam is leading the way in addressing this with our range of recombinant monoclonal antibodies and knockout edited cell lines for gold-standard validation. Please check that this product meets your needs before purchasing.</p> <p>If you have any questions, special requirements or concerns, please send us an inquiry and/or contact our Support team ahead of purchase. Recommended alternatives for this product can be found below, along with publications, customer reviews and Q&As</p>

Properties

Form	Liquid
Storage instructions	Shipped at 4°C. Upon delivery aliquot and store at -20°C. Avoid repeated freeze / thaw cycles.
Storage buffer	Constituent: PBS
Purity	Protein G purified
Clonality	Monoclonal
Clone number	LP1
Isotype	IgG1

Applications

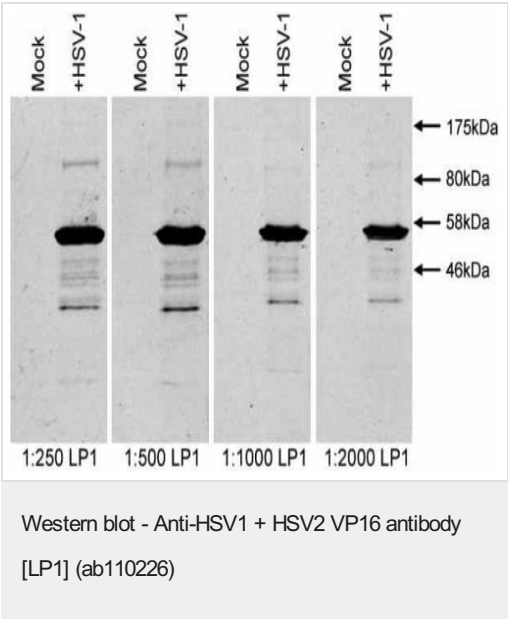
The Abpromise guarantee Our **Abpromise guarantee** covers the use of ab110226 in the following tested applications.

The application notes include recommended starting dilutions; optimal dilutions/concentrations should be determined by the end user.

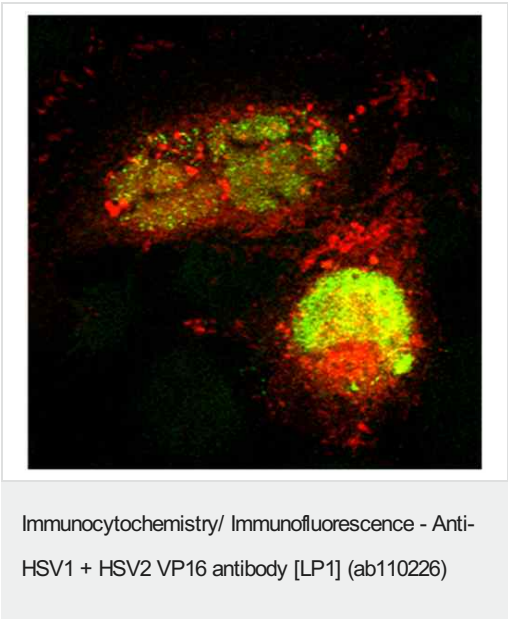
Application	Abreviews	Notes
ICC/IF		1/100.
IP		1/50.
WB		1/1000. Predicted molecular weight: 56 kDa.

Target

Images



Vero cells were mock infected or infected with HSV-1 (strain SC16) at 10PFU/cell and harvested at 18h post infection. Cells were lysed in 50mM Tris pH 7.6, 150 mM NaCl, 1% sodium deoxycholate, 1% Triton X-100 supplemented with protease inhibitors. Samples were boiled in SDS-PAGE sample buffer, separated on a 10% polyacrylamide gel and transferred to a nitrocellulose membrane by western blot. Membranes were blocked in PBS, 0.05% Tween-20, 5% dried milk powder and incubated with ab110226 at various dilutions followed by anti-mouse-IRdye 800CW and scanned using an infrared imager. Each lane corresponds to approximately 3x10⁵ cells.



HeLa cells were infected with HSV-1 (strain SC16) at 3 PFU/cell and fixed in 4% formaldehyde at 18h post infection. Cells were permeabilised with 0.1% Triton X-100 and incubated with ab110226 (red) and anti-capsid (green) followed by Alexa-488 and Alexa-633 conjugated secondary antibodies.

Please note: All products are "FOR RESEARCH USE ONLY. NOT FOR USE IN DIAGNOSTIC PROCEDURES"

Our Abpromise to you: Quality guaranteed and expert technical support

- Replacement or refund for products not performing as stated on the datasheet
- Valid for 12 months from date of delivery
- Response to your inquiry within 24 hours

- We provide support in Chinese, English, French, German, Japanese and Spanish
- Extensive multi-media technical resources to help you
- We investigate all quality concerns to ensure our products perform to the highest standards

If the product does not perform as described on this datasheet, we will offer a refund or replacement. For full details of the Abpromise, please visit <https://www.abcam.com/abpromise> or contact our technical team.

Terms and conditions

- Guarantee only valid for products bought direct from Abcam or one of our authorized distributors