

Anti-Human IgG antibody [KT131] ab211339

[1 References](#) [4 Images](#)

Overview

Product name	Anti-Human IgG antibody [KT131]
Description	Mouse monoclonal [KT131] to Human IgG
Host species	Mouse
Specificity	ab211339 is specific for IgG1, IgG2, IgG3, IgG4. It does not cross-react with Human IgA, IgE and IgM.
Tested applications	Suitable for: Sandwich ELISA, WB, ELISA
Species reactivity	Reacts with: Human, Recombinant fragment
Immunogen	Full length protein corresponding to Human Human IgG.
Positive control	Purified immunoglobulins IgG1, IgG2, IgG3, IgG4, IgG.
General notes	<p>The Life Science industry has been in the grips of a reproducibility crisis for a number of years. Abcam is leading the way in addressing this with our range of recombinant monoclonal antibodies and knockout edited cell lines for gold-standard validation. Please check that this product meets your needs before purchasing.</p> <p>If you have any questions, special requirements or concerns, please send us an inquiry and/or contact our Support team ahead of purchase. Recommended alternatives for this product can be found below, along with publications, customer reviews and Q&As</p>

Properties

Form	Liquid
Storage instructions	Shipped at 4°C. Store at +4°C short term (1-2 weeks). Upon delivery aliquot. Store at -20°C long term. Avoid freeze / thaw cycle.
Storage buffer	Preservative: 0.09% Sodium azide Constituent: 99% PBS
Purity	Protein A purified
Clonality	Monoclonal
Clone number	KT131
Isotype	IgG2a

Applications

Applications

The Abpromise guarantee

Our **Abpromise guarantee** covers the use of ab211339 in the following tested applications.

The application notes include recommended starting dilutions; optimal dilutions/concentrations should be determined by the end user.

Application	Abreviews	Notes
Sandwich ELISA		Use a concentration of 5 µg/ml.
WB		1/500 - 1/10000.
ELISA		1/1000.

Target

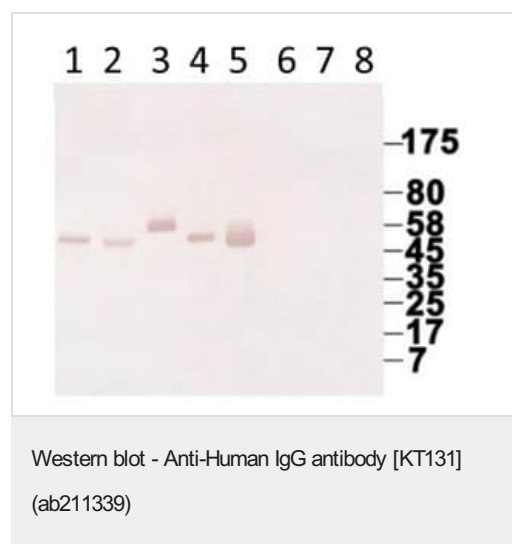
Relevance

IgG is a monomeric immunoglobulin, built of two heavy chains gamma and two light chains. Each molecule has two antigen binding sites. This is the most abundant immunoglobulin and is approximately equally distributed in blood and in tissue liquids, constituting 75% of serum immunoglobulins in humans. This is the only isotype that can pass through the human placenta, thereby providing protection to the fetus in its first weeks of life before its own immune system has developed. It can bind to many kinds of pathogens, for example viruses, bacteria, and fungi, and protects the body against them by complement activation (classic pathway), opsonization for phagocytosis and neutralisation of their toxins. There are 4 subclasses: IgG1 (66%), IgG2 (23%), IgG3 (7%) and IgG4 (4%).

Cellular localization

Cell Membrane and Secreted

Images



All lanes : Anti-Human IgG antibody [KT131] (ab211339) at 1/500 dilution

Lane 1 : Purified immunoglobulin IgG1

Lane 2 : Purified immunoglobulin IgG2

Lane 3 : Purified immunoglobulin IgG3

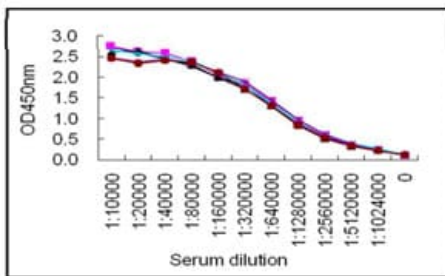
Lane 4 : Purified immunoglobulin IgG4

Lane 5 : Purified immunoglobulin IgG

Lane 6 : Purified immunoglobulin IgA

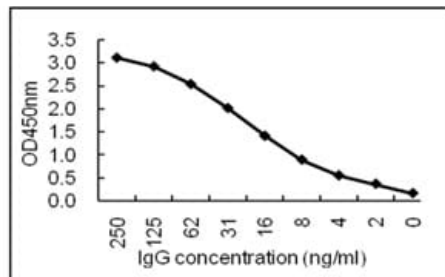
Lane 7 : Purified immunoglobulin IgE

Lane 8 : Purified immunoglobulin IgM



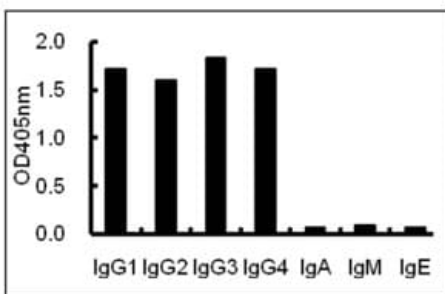
Sandwich ELISA for normal Human serum samples using ab211339 coated plate and HRP conjugated antibody.

Sandwich ELISA - Anti-Human IgG antibody [KT131]
(ab211339)



Sandwich ELISA for purified IgG using ab211339 coated plate and HRP conjugated antibody.

Sandwich ELISA - Anti-Human IgG antibody [KT131]
(ab211339)



ELISA using plates coated with Human antibodies with various isotypes.

ELISA - Anti-Human IgG antibody [KT131]
(ab211339)

Please note: All products are "FOR RESEARCH USE ONLY. NOT FOR USE IN DIAGNOSTIC PROCEDURES"

Our Abpromise to you: Quality guaranteed and expert technical support

- Replacement or refund for products not performing as stated on the datasheet

- Valid for 12 months from date of delivery
- Response to your inquiry within 24 hours
- We provide support in Chinese, English, French, German, Japanese and Spanish
- Extensive multi-media technical resources to help you
- We investigate all quality concerns to ensure our products perform to the highest standards

If the product does not perform as described on this datasheet, we will offer a refund or replacement. For full details of the Abpromise, please visit <https://www.abcam.com/abpromise> or contact our technical team.

Terms and conditions

- Guarantee only valid for products bought direct from Abcam or one of our authorized distributors