

Product datasheet

Anti-Human IgG3 antibody [EPR4419] ab109761

Recombinant RabMAb

[11 References](#) [2 Images](#)

Overview

Product name	Anti-Human IgG3 antibody [EPR4419]
Description	Rabbit monoclonal [EPR4419] to Human IgG3
Host species	Rabbit
Specificity	ab109761 does not cross-react with human IgG1, IgG2, and IgG4.
Tested applications	Suitable for: WB, IP Unsuitable for: Flow Cyt, ICC/IF or IHC-P
Species reactivity	Reacts with: Human, Recombinant fragment
Immunogen	Synthetic peptide. This information is proprietary to Abcam and/or its suppliers.
Positive control	IgG3 recombinant protein, Human tonsil and Human plasma lysates.
General notes	<p>This product is a recombinant monoclonal antibody, which offers several advantages including:</p> <ul style="list-style-type: none"> - High batch-to-batch consistency and reproducibility - Improved sensitivity and specificity - Long-term security of supply - Animal-free production <p>For more information see here.</p> <p>Our RabMAb[®] technology is a patented hybridoma-based technology for making rabbit monoclonal antibodies. For details on our patents, please refer to RabMAb[®] patents.</p> <p>Mouse, Rat: We have preliminary internal testing data to indicate this antibody may not react with these species. Please contact us for more information.</p>

Properties

Form	Liquid
Storage instructions	Shipped at 4°C. Store at +4°C short term (1-2 weeks). Upon delivery aliquot. Store at -20°C. Stable for 12 months at -20°C.
Storage buffer	<p>pH: 7.20</p> <p>Preservative: 0.05% Sodium azide</p> <p>Constituents: 0.1% BSA, 40% Glycerol (glycerin, glycerine), 9.85% Tris glycine, 50% Tissue culture supernatant</p>

Purity	Protein A purified
Clonality	Monoclonal
Clone number	EPR4419
Isotype	IgG

Applications

The Abpromise guarantee Our **Abpromise guarantee** covers the use of ab109761 in the following tested applications.

The application notes include recommended starting dilutions; optimal dilutions/concentrations should be determined by the end user.

Application	Abreviews	Notes
WB		1/1000 - 1/10000.
IP		1/10 - 1/100.

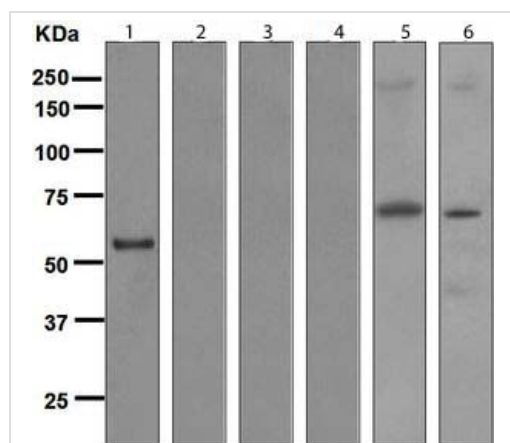
Application notes Is unsuitable for Flow Cyt, ICC/IF or IHC-P.

Target

Relevance IgG is a monomeric immunoglobulin, built of two heavy chains gamma and two light chains. Each molecule has two antigen binding sites. This is the most abundant immunoglobulin and is approximately equally distributed in blood and in tissue liquids, constituting 75% of serum immunoglobulins in humans. There are 4 subclasses: IgG1 (66%), IgG2 (23%), IgG3 (7%) and IgG4 (4%).

Cellular localization Secreted

Images



Western blot - Anti-Human IgG3 antibody
[EPR4419] (ab109761)

All lanes : Anti-Human IgG3 antibody [EPR4419] (ab109761) at 1/1000 dilution

Lane 1 : IgG3 at 0.01 µg

Lane 2 : IgG1 at 0.01 µg

Lane 3 : IgG2 at 0.01 µg

Lane 4 : IgG4 recombinant protein at 0.01 µg

Lane 5 : Human tonsil lysate at 10 µg

Lane 6 : Human plasma lysate

Why choose a recombinant antibody?



Research with confidence
Consistent and reproducible results



Long-term and scalable supply
Recombinant technology



Success from the first experiment
Confirmed specificity



Ethical standards compliant
Animal-free production

Anti-Human IgG3 antibody [EPR4419] (ab109761)

Please note: All products are "FOR RESEARCH USE ONLY. NOT FOR USE IN DIAGNOSTIC PROCEDURES"

Our Abpromise to you: Quality guaranteed and expert technical support

- Replacement or refund for products not performing as stated on the datasheet
- Valid for 12 months from date of delivery
- Response to your inquiry within 24 hours
- We provide support in Chinese, English, French, German, Japanese and Spanish
- Extensive multi-media technical resources to help you
- We investigate all quality concerns to ensure our products perform to the highest standards

If the product does not perform as described on this datasheet, we will offer a refund or replacement. For full details of the Abpromise, please visit <https://www.abcam.com/abpromise> or contact our technical team.

Terms and conditions

- Guarantee only valid for products bought direct from Abcam or one of our authorized distributors