

Product datasheet

Anti-Human Serum Albumin antibody [15C7] α b10241

★★★★★ [7 Abreviews](#) [39 References](#) [4 Images](#)

Overview

Product name	Anti-Human Serum Albumin antibody [15C7]
Description	Mouse monoclonal [15C7] to Human Serum Albumin
Host species	Mouse
Specificity	No cross-reactivity with other human proteins tested. Does not react with bovine serum albumin, egg white albumin or human alpha fetoprotein.
Tested applications	Suitable for: WB, Sandwich ELISA, Dot blot
Species reactivity	Reacts with: Human Does not react with: Chicken, Cow
Immunogen	Full length native protein (purified) corresponding to Human Serum Albumin. Database link: P02768
General notes	<p>Concentration varies from lot to lot and can be provided on request.</p> <p>This product was changed from ascites to tissue culture supernatant on 17th October 2017 and product received after this date will be from tissue culture supernatant.</p> <p>The Life Science industry has been in the grips of a reproducibility crisis for a number of years. Abcam is leading the way in addressing this with our range of recombinant monoclonal antibodies and knockout edited cell lines for gold-standard validation. Please check that this product meets your needs before purchasing.</p> <p>If you have any questions, special requirements or concerns, please send us an inquiry and/or contact our Support team ahead of purchase. Recommended alternatives for this product can be found below, along with publications, customer reviews and Q&As</p>

Properties

Form	Liquid
Storage instructions	Shipped at 4°C. Upon delivery aliquot and store at -20°C. Avoid freeze / thaw cycles.
Storage buffer	pH: 7.40 Preservative: 0.09% Sodium azide Constituent: PBS
Purity	Protein A purified
Clonality	Monoclonal

Clone number	15C7
Myeloma	Sp2/0
Isotype	IgG2b

Applications

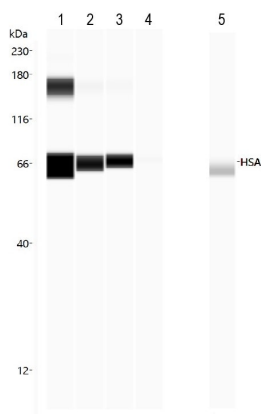
The Abpromise guarantee Our **Abpromise guarantee** covers the use of ab10241 in the following tested applications. The application notes include recommended starting dilutions; optimal dilutions/concentrations should be determined by the end user.

Application	Abreviews	Notes
WB	★★★★★ (2)	Use at an assay dependent concentration. Predicted molecular weight: 65 kDa.
Sandwich ELISA		Use a concentration of 1 µg/ml. Can be paired for Sandwich ELISA with <u>Rabbit polyclonal to Human Serum Albumin (ab2406)</u> .
Dot blot		Use at an assay dependent concentration.

Target

Function	Serum albumin, the main protein of plasma, has a good binding capacity for water, Ca(2+), Na(+), K(+), fatty acids, hormones, bilirubin and drugs. Its main function is the regulation of the colloidal osmotic pressure of blood. Major zinc transporter in plasma, typically binds about 80% of all plasma zinc.
Tissue specificity	Plasma.
Involvement in disease	Defects in ALB are a cause of familial dysalbuminemic hyperthyroxinemia (FDH) [MIM:103600]. FDH is a form of euthyroid hyperthyroxinemia that is due to increased affinity of ALB for T(4). It is the most common cause of inherited euthyroid hyperthyroxinemia in Caucasian population.
Sequence similarities	Belongs to the ALB/AFP/VDB family. Contains 3 albumin domains.
Post-translational modifications	Kenitra variant is partially O-glycosylated at Thr-620. It has two new disulfide bonds Cys-600 to Cys-602 and Cys-601 to Cys-606. Glycated in diabetic patients. Phosphorylation sites are present in the extracellular medium. Acetylated on Lys-223 by acetylsalicylic acid.
Cellular localization	Secreted.

Images



Dot Blot - Anti-Human Serum Albumin antibody
[15C7] (ab10241)

Dot Blot - Anti-Human Serum Albumin antibody [15C7] (ab10241)

Lane 1: HSA 0.5 mg/ml

Lane 2: HSA 0.25 mg/ml

Lane 3: HSA 0.1 mg/ml

Lane 4: HSA 0.01 mg/ml

Lane 5: BSA 0.5 mg/ml



Western blot - Anti-Human Serum Albumin antibody
[15C7] (ab10241)

This image is courtesy of an Abreview submitted by
John Andersen

Anti-Human Serum Albumin antibody [15C7] (ab10241) at 1/2000
dilution (in 5% milk for 1 hour) + Human blood serum at 2 μ g

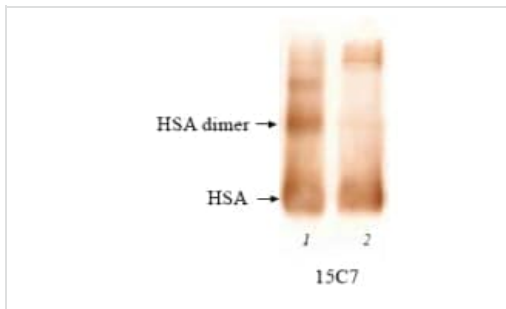
Secondary

anti-mouse IgG (H&L)

Developed using the ECL technique.

Predicted band size: 65 kDa

Exposure time: 5 seconds

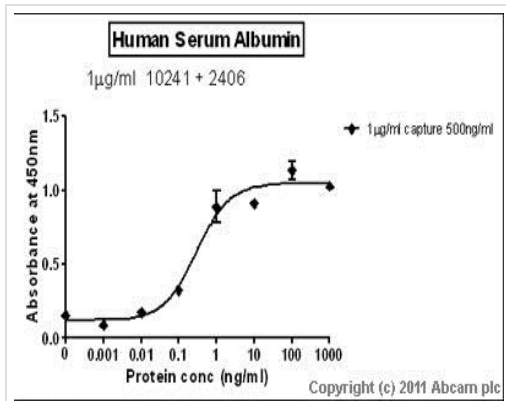


Western blot - Anti-Human Serum Albumin antibody
[15C7] (ab10241)

Detection of Human Serum Albumin by ab10241 in western blotting.

Lane 1 - human serum albumin, 3 µg.

Lane 2 - normal human serum, ~3 µg of human serum albumin.



Sandwich ELISA - Anti-Human Serum Albumin
antibody [15C7] (ab10241)

Standard Curve for Human Serum Albumin (Analyte: Human Serum Albumin protein (**ab67670**)); dilution range 1pg/ml to 1µg/ml using Capture Antibody Mouse monoclonal [15C7] to Human Serum Albumin (ab10241) at 1µg/ml and Detector Antibody Rabbit polyclonal to Human Serum Albumin (**ab2406**) at 0.5µg/ml.

Please note: All products are "FOR RESEARCH USE ONLY. NOT FOR USE IN DIAGNOSTIC PROCEDURES"

Our Abpromise to you: Quality guaranteed and expert technical support

- Replacement or refund for products not performing as stated on the datasheet
- Valid for 12 months from date of delivery
- Response to your inquiry within 24 hours
- We provide support in Chinese, English, French, German, Japanese and Spanish
- Extensive multi-media technical resources to help you
- We investigate all quality concerns to ensure our products perform to the highest standards

If the product does not perform as described on this datasheet, we will offer a refund or replacement. For full details of the Abpromise, please visit <https://www.abcam.com/abpromise> or contact our technical team.

Terms and conditions

- Guarantee only valid for products bought direct from Abcam or one of our authorized distributors