

### Anti-HYAL1 antibody ab96751

1 Image

#### Overview

<b>Product name</b>	Anti-HYAL1 antibody
<b>Description</b>	Rabbit polyclonal to HYAL1
<b>Host species</b>	Rabbit
<b>Tested applications</b>	<b>Suitable for:</b> WB
<b>Species reactivity</b>	<b>Reacts with:</b> Human
<b>Immunogen</b>	Synthetic peptide corresponding to Human HYAL1 aa 50-150 conjugated to keyhole limpet haemocyanin. (Peptide available as <a href="#">ab107788</a> )
<b>Positive control</b>	This antibody gave a positive signal in the following Human tissue lysates: Liver; Kidney; Heart; Breast.
<b>General notes</b>	<p>The Life Science industry has been in the grips of a reproducibility crisis for a number of years. Abcam is leading the way in addressing this with our range of recombinant monoclonal antibodies and knockout edited cell lines for gold-standard validation. Please check that this product meets your needs before purchasing.</p> <p>If you have any questions, special requirements or concerns, please send us an inquiry and/or contact our Support team ahead of purchase. Recommended alternatives for this product can be found below, along with publications, customer reviews and Q&amp;As</p>

#### Properties

<b>Form</b>	Liquid
<b>Storage instructions</b>	Shipped at 4°C. Store at +4°C short term (1-2 weeks). Upon delivery aliquot. Store at -20°C or -80°C. Avoid freeze / thaw cycle.
<b>Storage buffer</b>	<p>pH: 7.40</p> <p>Preservative: 0.02% Sodium azide</p> <p>Constituent: PBS</p> <p>Batches of this product that have a concentration &lt; 1mg/ml may have BSA added as a stabilising agent. If you would like information about the formulation of a specific lot, please contact our scientific support team who will be happy to help.</p>
<b>Purity</b>	Immunogen affinity purified

<b>Clonality</b>	Polyclonal
<b>Isotype</b>	IgG

## Applications

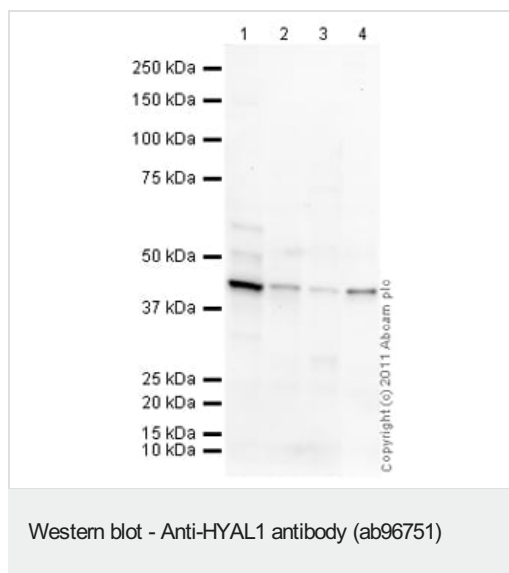
**The Abpromise guarantee** Our **Abpromise guarantee** covers the use of ab96751 in the following tested applications. The application notes include recommended starting dilutions; optimal dilutions/concentrations should be determined by the end user.

Application	Abreviews	Notes
<b>WB</b>		Use a concentration of 1 µg/ml. Detects a band of approximately 45 kDa (predicted molecular weight: 48 kDa).

## Target

<b>Function</b>	May have a role in promoting tumor progression. May block the TGFB1-enhanced cell growth.
<b>Tissue specificity</b>	Highly expressed in the liver, kidney and heart. Weakly expressed in lung, placenta and skeletal muscle. No expression detected in adult brain. Isoform 1 is expressed only in bladder and prostate cancer cells, G2/G3 bladder tumor tissues and lymph node specimens showing tumor invasive tumors cells. Isoform 3, isoform 4, isoform 5 and isoform 6 are expressed in normal bladder and bladder tumor tissues.
<b>Involvement in disease</b>	Defects in HYAL1 are the cause of mucopolysaccharidosis type 9 (MPS9) [MIM:601492]; also called hyaluronidase deficiency. MPS9 is a lysosomal storage disease characterized by high hyaluronan (HA) concentration in the serum. The clinical features are periarticular soft tissue masses, mild short stature and acetabular erosions, and absence of neurological or visceral involvement.
<b>Sequence similarities</b>	Belongs to the glycosyl hydrolase 56 family. Contains 1 EGF-like domain.
<b>Cellular localization</b>	Secreted. Lysosome.

## Images



**All lanes :** Anti-HYAL1 antibody (ab96751) at 1 µg/ml

**Lane 1 :** Human liver tissue lysate - total protein ([ab29889](#))

**Lane 2 :** Human kidney tissue lysate - total protein ([ab30203](#))

**Lane 3 :** Human heart tissue lysate - total protein ([ab29431](#))

**Lane 4 :** Human breast tissue lysate - total protein ([ab30090](#))

Lysates/proteins at 10 µg per lane.

### Secondary

**All lanes :** Goat Anti-Rabbit IgG H&L (HRP) preadsorbed ([ab97080](#)) at 1/5000 dilution

Developed using the ECL technique.

Performed under reducing conditions.

**Predicted band size:** 48 kDa

**Observed band size:** 45 kDa

**Additional bands at:** 60 kDa. We are unsure as to the identity of these extra bands.

**Exposure time:** 4 minutes

The band observed at 45 kDa could potentially be a cleaved form of HYAL1 due to the presence of a 21 amino acid signal peptide.

**Please note:** All products are "FOR RESEARCH USE ONLY. NOT FOR USE IN DIAGNOSTIC PROCEDURES"

### Our Abpromise to you: Quality guaranteed and expert technical support

- Replacement or refund for products not performing as stated on the datasheet
- Valid for 12 months from date of delivery
- Response to your inquiry within 24 hours
- We provide support in Chinese, English, French, German, Japanese and Spanish
- Extensive multi-media technical resources to help you
- We investigate all quality concerns to ensure our products perform to the highest standards

If the product does not perform as described on this datasheet, we will offer a refund or replacement. For full details of the Abpromise, please visit <https://www.abcam.com/abpromise> or contact our technical team.

## Terms and conditions

---

- Guarantee only valid for products bought direct from Abcam or one of our authorized distributors