

## Product datasheet

# Anti-Hydrogen Potassium ATPase Beta/ATP4B antibody ab176992

[2 References](#) [2 Images](#)

### Overview

---

<b>Product name</b>	Anti-Hydrogen Potassium ATPase Beta/ATP4B antibody
<b>Description</b>	Rabbit polyclonal to Hydrogen Potassium ATPase Beta/ATP4B
<b>Host species</b>	Rabbit
<b>Tested applications</b>	<b>Suitable for:</b> IHC-P, WB
<b>Species reactivity</b>	<b>Reacts with:</b> Mouse, Human
<b>Immunogen</b>	Recombinant fragment corresponding to Human Hydrogen Potassium ATPase Beta/ATP4B aa 167-290. Sequence:  DPNF GFEEGKPCFI IKMNRVKFL PSNGSAPRVD CAFLDQPREL GQPLQVKYYP PNGTFSLHYF PYYGKKAQPH YSNPLVAAKL LNIPRNAEVA VCKVMAEHV TFNNPHDPYE GKVEFKLKIE

Database link: [P51164](#)

 [Run BLAST with](#)

 [Run BLAST with](#)

**Positive control** Mouse heart lysate, Human colon cancer tissue

**General notes** The Life Science industry has been in the grips of a reproducibility crisis for a number of years. Abcam is leading the way in addressing this with our range of recombinant monoclonal antibodies and knockout edited cell lines for gold-standard validation. Please check that this product meets your needs before purchasing.

If you have any questions, special requirements or concerns, please send us an inquiry and/or contact our Support team ahead of purchase. Recommended alternatives for this product can be found below, along with publications, customer reviews and Q&As

### Properties

---

<b>Form</b>	Lyophilized:200 ul sterile water
<b>Storage instructions</b>	Shipped at 4°C. Store at +4°C short term (1-2 weeks). Upon delivery aliquot. Store at -20°C long term. Avoid freeze / thaw cycle.
<b>Storage buffer</b>	pH: 7.20

	Preservative: 0.02% Sodium azide Constituents: 98% PBS, 1% BSA
<b>Purity</b>	Immunogen affinity purified
<b>Clonality</b>	Polyclonal
<b>Isotype</b>	IgG

## Applications

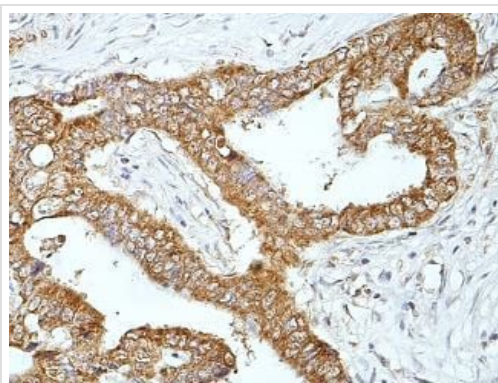
**The Abpromise guarantee** Our **Abpromise guarantee** covers the use of ab176992 in the following tested applications. The application notes include recommended starting dilutions; optimal dilutions/concentrations should be determined by the end user.

Application	Abreviews	Notes
IHC-P		1/100 - 1/500.
WB		1/200 - 1/1000. Predicted molecular weight: 33 kDa.

## Target

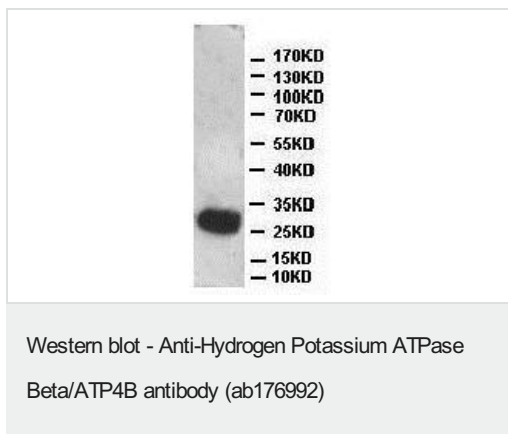
<b>Function</b>	Required for stabilization and maturation of the catalytic proton pump alpha subunit and may also involved in cell adhesion and establishing epithelial cell polarity.
<b>Sequence similarities</b>	Belongs to the X(+)/potassium ATPases subunit beta family.
<b>Domain</b>	The C-terminal lobe folds into an immunoglobulin-like domain and mediates cell adhesion properties.
<b>Cellular localization</b>	Cell membrane.

## Images



Immunohistochemical staining of formalin-fixed, paraffin-embedded Human colon carcinoma tissue labeling Hydrogen Potassium ATPase Beta/ATP4B with ab176992 at 1/100 dilution showing membrane staining

Immunohistochemistry (Formalin/PFA-fixed paraffin-embedded sections) - Anti-Hydrogen Potassium ATPase Beta/ATP4B antibody (ab176992)



Anti-Hydrogen Potassium ATPase Beta/ATP4B antibody  
(ab176992) at 1/500 dilution + Mouse heart lysate

**Predicted band size:** 33 kDa

**Please note:** All products are "FOR RESEARCH USE ONLY. NOT FOR USE IN DIAGNOSTIC PROCEDURES"

### Our Abpromise to you: Quality guaranteed and expert technical support

---

- Replacement or refund for products not performing as stated on the datasheet
- Valid for 12 months from date of delivery
- Response to your inquiry within 24 hours
- We provide support in Chinese, English, French, German, Japanese and Spanish
- Extensive multi-media technical resources to help you
- We investigate all quality concerns to ensure our products perform to the highest standards

If the product does not perform as described on this datasheet, we will offer a refund or replacement. For full details of the Abpromise, please visit <https://www.abcam.com/abpromise> or contact our technical team.

### Terms and conditions

---

- Guarantee only valid for products bought direct from Abcam or one of our authorized distributors