

Anti-ICAM1 antibody [MEM-111] ab2213

★★★★☆ [12 Abreviews](#) [72 References](#) [3 Images](#)

Overview

Product name	Anti-ICAM1 antibody [MEM-111]
Description	Mouse monoclonal [MEM-111] to ICAM1
Host species	Mouse
Specificity	his antibody reacts with human CD54 antigen.
Tested applications	Suitable for: WB, Flow Cyt
Species reactivity	Reacts with: Human
Immunogen	Tissue, cells or virus corresponding to Human ICAM1. Burkitt's lymphoma cell line RAJI
Positive control	For WB it is highly recommended to use TNF-alpha activated HUVEC cells as a positive control.
General notes	<p>The Life Science industry has been in the grips of a reproducibility crisis for a number of years. Abcam is leading the way in addressing this with our range of recombinant monoclonal antibodies and knockout edited cell lines for gold-standard validation. Please check that this product meets your needs before purchasing.</p> <p>If you have any questions, special requirements or concerns, please send us an inquiry and/or contact our Support team ahead of purchase. Recommended alternatives for this product can be found below, along with publications, customer reviews and Q&As</p>

Properties

Form	Liquid
Storage instructions	Shipped at 4°C. Store at +4°C short term (1-2 weeks). Upon delivery aliquot. Store at -20°C or -80°C. Avoid freeze / thaw cycle.
Storage buffer	<p>pH: 7.40</p> <p>Preservative: 0.097% Sodium azide</p> <p>Constituent: PBS</p>
Purity	Protein A purified
Clonality	Monoclonal
Clone number	MEM-111
Myeloma	unknown
Isotype	IgG2a
Light chain type	unknown

Applications

The Abpromise guarantee

Our **Abpromise guarantee** covers the use of ab2213 in the following tested applications.

The application notes include recommended starting dilutions; optimal dilutions/concentrations should be determined by the end user.

Application	Abreviews	Notes
WB	★★★★★ (3)	Use a concentration of 1 - 2 µg/ml. Use under non-reducing conditions.
Flow Cyt	★★★★★ (3)	Use a concentration of 0.5 - 4 µg/ml.

Target

Function

ICAM proteins are ligands for the leukocyte adhesion protein LFA-1 (integrin alpha-L/beta-2). During leukocyte trans-endothelial migration, ICAM1 engagement promotes the assembly of endothelial apical cups through ARHGEF26/SGEF and RHOG activation. In case of rhinovirus infection acts as a cellular receptor for the virus.

Sequence similarities

Belongs to the immunoglobulin superfamily. ICAM family.
Contains 5 Ig-like C2-type (immunoglobulin-like) domains.

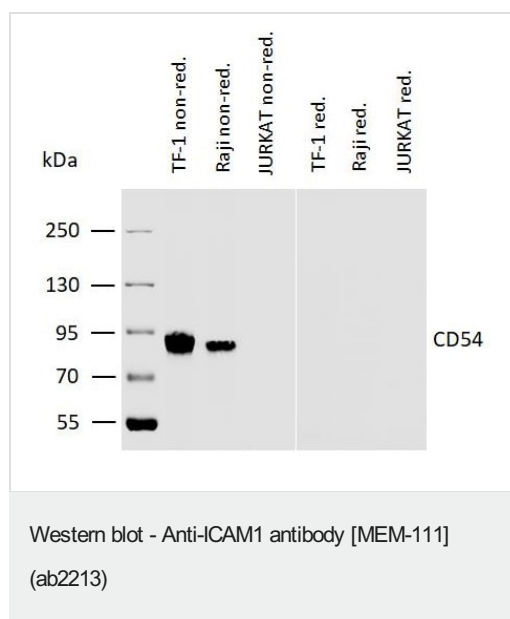
Post-translational modifications

Monoubiquitinated, which is promoted by MARCH9 and leads to endocytosis.

Cellular localization

Membrane.

Images



All lanes : Anti-ICAM1 antibody [MEM-111] (ab2213) at 2 µg/ml

Lane 1 : TF-1 cell lysates under non-reducing condition

Lane 2 : Raji cell lysates under non-reducing condition

Lane 3 : Jurkat cell lysates under non-reducing condition

Lane 4 : TF-1 cell lysates under reducing condition

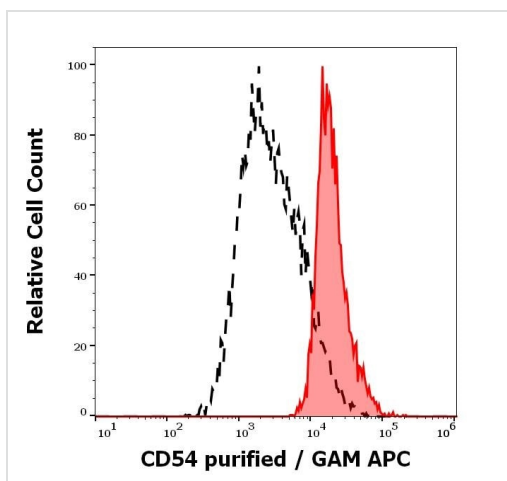
Lane 5 : Raji cell lysates under reducing condition

Lane 6 : Jurkat cell lysates under reducing condition

Secondary

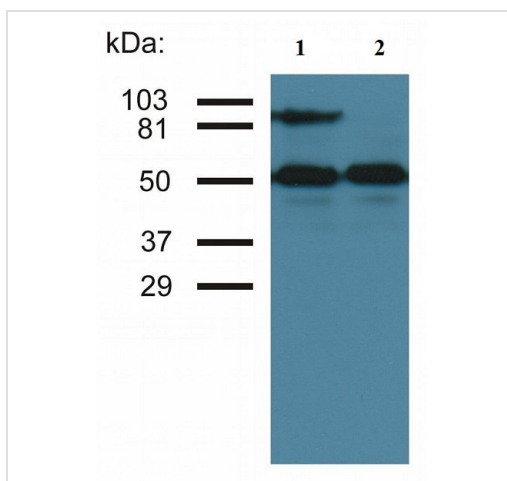
All lanes : IRDye800-conjugated anti-mouse secondary antibody

Observed band size: 88 kDa



Flow cytometric analysis of Human Peripheral Blood cells labelling ICAM1 with ab2213 at 0.6 ug/ml showing separation of human monocytes (red-filled) from human lymphocytes (black-dashed).

Flow Cytometry - Anti-ICAM1 antibody [MEM-111]
(ab2213)



All lanes : Anti-ICAM1 antibody [MEM-111] (ab2213)

Lane 1 : TNF-alpha activated HUVEC (Human umbilical vein endothelial cell line) whole cell lysate

Lane 2 : TNF-alpha nonactivated HUVEC cells

Performed under non-reducing conditions.

Observed band size: 90 kDa

Lower bands represent tubulin as a loading control.

Western blot - Anti-ICAM1 antibody [MEM-111]
(ab2213)

Please note: All products are "FOR RESEARCH USE ONLY. NOT FOR USE IN DIAGNOSTIC PROCEDURES"

Our Abpromise to you: Quality guaranteed and expert technical support

- Replacement or refund for products not performing as stated on the datasheet
- Valid for 12 months from date of delivery
- Response to your inquiry within 24 hours
- We provide support in Chinese, English, French, German, Japanese and Spanish
- Extensive multi-media technical resources to help you
- We investigate all quality concerns to ensure our products perform to the highest standards

If the product does not perform as described on this datasheet, we will offer a refund or replacement. For full details of the Abpromise,

please visit <https://www.abcam.com/abpromise> or contact our technical team.

Terms and conditions

- Guarantee only valid for products bought direct from Abcam or one of our authorized distributors