

Product datasheet

Anti-Id1 antibody [2456C1α] ab66495

★★★★★ [1 Abreviews](#) [4 References](#) [1 Image](#)

Overview

Product name	Anti-Id1 antibody [2456C1α]
Description	Mouse monoclonal [2456C1α] to Id1
Host species	Mouse
Tested applications	Suitable for: WB
Species reactivity	Reacts with: Recombinant fragment
Immunogen	Recombinant fragment corresponding to Human Id1 (internal sequence).
General notes	<p>The Life Science industry has been in the grips of a reproducibility crisis for a number of years. Abcam is leading the way in addressing this with our range of recombinant monoclonal antibodies and knockout edited cell lines for gold-standard validation. Please check that this product meets your needs before purchasing.</p> <p>If you have any questions, special requirements or concerns, please send us an inquiry and/or contact our Support team ahead of purchase. Recommended alternatives for this product can be found below, along with publications, customer reviews and Q&As</p>

Properties

Form	Liquid
Storage instructions	Shipped at 4°C. Store at +4°C.
Storage buffer	pH: 7.4 Preservative: 0.05% Sodium azide Constituents: PBS, 1% BSA
Purity	Protein G purified
Purification notes	This antibody was purified using protein G column chromatography from culture supernatant of hybridoma cultured in a medium containing bovine IgG depleted (~95%) fetal bovine serum.
Clonality	Monoclonal
Clone number	2456C1α
Isotype	IgG1

Applications

The Abpromise guarantee

Our **Abpromise guarantee** covers the use of ab66495 in the following tested applications.

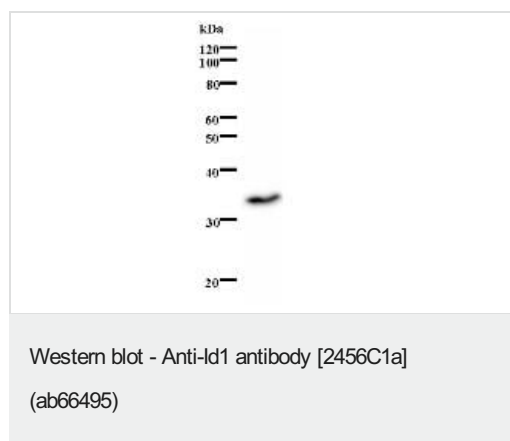
The application notes include recommended starting dilutions; optimal dilutions/concentrations should be determined by the end user.

Application	Abreviews	Notes
WB		Use at an assay dependent concentration. Predicted molecular weight: 16 kDa.

Target

Function	ID (inhibitor of DNA binding) HLH proteins lack a basic DNA-binding domain but are able to form heterodimers with other HLH proteins, thereby inhibiting DNA binding.
Sequence similarities	Contains 1 basic helix-loop-helix (bHLH) domain.
Developmental stage	Expression correlates with proliferation in some types of cells.
Cellular localization	Cytoplasm. Nucleus.

Images



Western blot analysis of immunized recombinant protein, using ab66495.

Please note: All products are "FOR RESEARCH USE ONLY. NOT FOR USE IN DIAGNOSTIC PROCEDURES"

Our Abpromise to you: Quality guaranteed and expert technical support

- Replacement or refund for products not performing as stated on the datasheet
- Valid for 12 months from date of delivery
- Response to your inquiry within 24 hours
- We provide support in Chinese, English, French, German, Japanese and Spanish
- Extensive multi-media technical resources to help you
- We investigate all quality concerns to ensure our products perform to the highest standards

If the product does not perform as described on this datasheet, we will offer a refund or replacement. For full details of the Abpromise, please visit <https://www.abcam.com/abpromise> or contact our technical team.

Terms and conditions

- Guarantee only valid for products bought direct from Abcam or one of our authorized distributors