



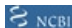


## Product datasheet

### Anti-ID2 antibody [4E12G5] ab166708

★ ★ ★ ★ ★ [1 Abreviews](#) [8 References](#) [4 Images](#)

#### Overview

<b>Product name</b>	Anti-ID2 antibody [4E12G5]
<b>Description</b>	Mouse monoclonal [4E12G5] to ID2
<b>Host species</b>	Mouse
<b>Tested applications</b>	<b>Suitable for:</b> WB, IHC-P, Flow Cyt
<b>Species reactivity</b>	<b>Reacts with:</b> Human <b>Predicted to work with:</b> Mouse, Rat, Cow, Pig, Chimpanzee, Cynomolgus monkey, Orangutan 
<b>Immunogen</b>	Purified recombinant full length protein, corresponding to amino acids 1-134 of Human ID2, expressed in E. coli (UniProt: Q02363). <a href="#"> Run BLAST with </a> <a href="#"> Run BLAST with </a>
<b>Positive control</b>	Human recombinant ID2 protein; SK N SH cells; Human breast cancer and rectum cancer tissues.
<b>General notes</b>	<p>The Life Science industry has been in the grips of a reproducibility crisis for a number of years. Abcam is leading the way in addressing this with our range of recombinant monoclonal antibodies and knockout edited cell lines for gold-standard validation. Please check that this product meets your needs before purchasing.</p> <p>If you have any questions, special requirements or concerns, please send us an inquiry and/or contact our Support team ahead of purchase. Recommended alternatives for this product can be found below, along with publications, customer reviews and Q&amp;As</p>

#### Properties

<b>Form</b>	Liquid
<b>Storage instructions</b>	Shipped at 4°C. Upon delivery aliquot and store at -20°C. Avoid repeated freeze / thaw cycles.
<b>Storage buffer</b>	Preservative: 0.05% Sodium azide Constituent: PBS
<b>Purity</b>	Protein G purified
<b>Clonality</b>	Monoclonal
<b>Clone number</b>	4E12G5
<b>Isotype</b>	IgG1

## Applications

### The Abpromise guarantee

Our [Abpromise guarantee](#) covers the use of ab166708 in the following tested applications.

The application notes include recommended starting dilutions; optimal dilutions/concentrations should be determined by the end user.

Application	Abreviews	Notes
WB		1/500 - 1/2000. Predicted molecular weight: 17.3 kDa.
IHC-P	★ ★ ★ ★ ★ (1)	1/200 - 1/1000.
Flow Cyt		1/200 - 1/400. <b>ab170190</b> - Mouse monoclonal IgG1, is suitable for use as an isotype control with this antibody.

## Target

### Function

ID (inhibitor of DNA binding) HLH proteins lack a basic DNA-binding domain but are able to form heterodimers with other HLH proteins, thereby inhibiting DNA binding. ID-2 may be an inhibitor of tissue-specific gene expression.

### Tissue specificity

Highly expressed in early fetal tissues, including those of the central nervous system.

### Sequence similarities

Contains 1 basic helix-loop-helix (bHLH) domain.

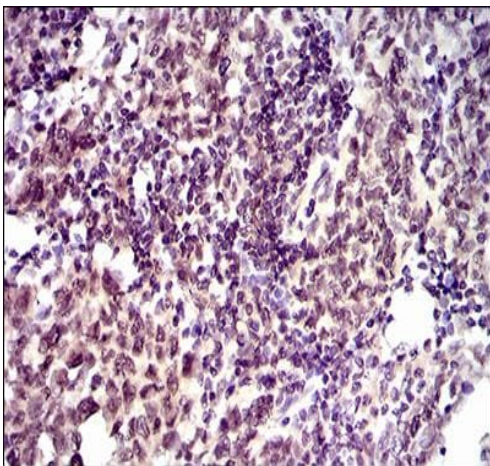
### Developmental stage

Found in most early fetal tissues but not in the corresponding mature tissues.

### Cellular localization

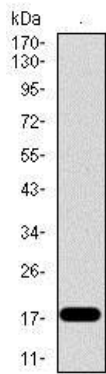
Cytoplasm. Nucleus.

## Images



Immunohistochemical analysis of paraffin embedded, DAB-stained Human breast cancer tissue labeling ID2 using ab166708 at a 1/200 dilution.

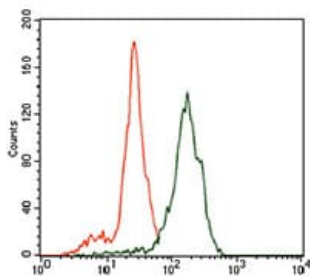
Immunohistochemistry (Formalin/PFA-fixed paraffin-embedded sections) - Anti-ID2 antibody [4E12G5] (ab166708)



Western blot - Anti-ID2 antibody [4E12G5]  
(ab166708)

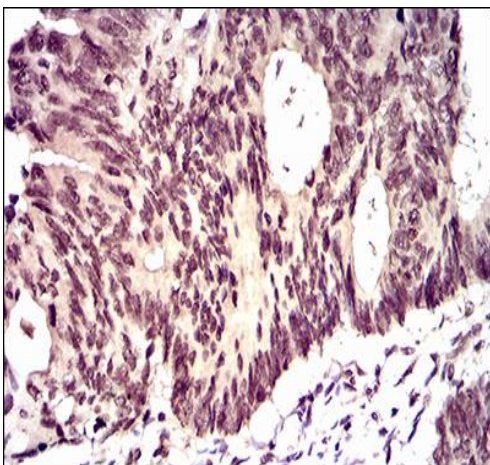
Anti-ID2 antibody [4E12G5] (ab166708) at 1/500 dilution +  
recombinant Human ID2 protein at 1 µg

**Predicted band size:** 17.3 kDa



Flow Cytometry - Anti-ID2 antibody [4E12G5]  
(ab166708)

Flow cytometric analysis of ID2-labeled SK N SH cells (green) and  
negative control cells (red), using ab166708 at a 1/200 dilution.



Immunohistochemistry (Formalin/PFA-fixed paraffin-  
embedded sections) - Anti-ID2 antibody [4E12G5]  
(ab166708)

Immunohistochemical analysis of paraffin embedded, DAB-stained  
Human rectum cancer tissue labeling ID2 using ab166708 at a  
1/200 dilution.

**Please note:** All products are "FOR RESEARCH USE ONLY. NOT FOR USE IN DIAGNOSTIC PROCEDURES"

### **Our Abpromise to you: Quality guaranteed and expert technical support**

---

- Replacement or refund for products not performing as stated on the datasheet
- Valid for 12 months from date of delivery
- Response to your inquiry within 24 hours
  
- We provide support in Chinese, English, French, German, Japanese and Spanish
- Extensive multi-media technical resources to help you
- We investigate all quality concerns to ensure our products perform to the highest standards

If the product does not perform as described on this datasheet, we will offer a refund or replacement. For full details of the Abpromise, please visit <https://www.abcam.com/abpromise> or contact our technical team.

### **Terms and conditions**

---

- Guarantee only valid for products bought direct from Abcam or one of our authorized distributors