




## Product datasheet

# Anti-ID2 antibody [OTI10C3] ab90055

[2 References](#) [6 Images](#)

### Overview

<b>Product name</b>	Anti-ID2 antibody [OTI10C3]
<b>Description</b>	Mouse monoclonal [OTI10C3] to ID2
<b>Host species</b>	Mouse
<b>Tested applications</b>	<b>Suitable for:</b> WB, IHC-P, ICC/IF, Flow Cyt (Intra)
<b>Species reactivity</b>	<b>Reacts with:</b> Human <b>Predicted to work with:</b> Mouse, Rat, Cow, Pig, Cynomolgus monkey, Orangutan 
<b>Immunogen</b>	Recombinant full length protein corresponding to Human ID2 aa 1-134. Protein expressed in E.coli. NP_002157 Sequence: MKAFFSPVRSVRKNSLSDHSLGISRSKTPVDDPMSLLYNM NDCYSKLKELV PSIPQNKVKSKMEILQHVIDYILDQLALDSHPTVSLHHQRP GQNQASR TPLTTLNTDISLSLQASEFPSELMSNDSKALCG  Database link: <a href="#">Q02363</a>  <a href="#">Run BLAST with</a>  <a href="#">Run BLAST with</a>
<b>Positive control</b>	IHC-P: Human liver, bladder carcinoma and liver carcinoma tissue. ICC/IF: HeLa cells. WB: pCMV6-ENTRY ID2 cDNA transfected HEK-293T cell lysate. Flow Cyt (Intra): SH-SY5Y cells.
<b>General notes</b>	<p>The clone number has been updated from 10C3 to OTI10C3, both clone numbers name the same clone.</p> <p>The Life Science industry has been in the grips of a reproducibility crisis for a number of years. Abcam is leading the way in addressing this with our range of recombinant monoclonal antibodies and knockout edited cell lines for gold-standard validation. Please check that this product meets your needs before purchasing.</p> <p>If you have any questions, special requirements or concerns, please send us an inquiry and/or contact our Support team ahead of purchase. Recommended alternatives for this product can be found below, along with publications, customer reviews and Q&amp;As</p>

### Properties

**Form** Liquid

<b>Storage instructions</b>	Shipped at 4°C. Store at +4°C short term (1-2 weeks). Upon delivery aliquot. Store at -20°C. Avoid freeze / thaw cycle.
<b>Storage buffer</b>	pH: 7.30 Preservative: 0.02% Sodium azide Constituents: 50% Glycerol, 1% BSA, PBS
<b>Purity</b>	Affinity purified
<b>Purification notes</b>	Purified from cell culture supernatant by affinity chromatography
<b>Clonality</b>	Monoclonal
<b>Clone number</b>	OTI10C3
<b>Isotype</b>	IgG2b

## Applications

**The Abpromise guarantee** Our **Abpromise guarantee** covers the use of ab90055 in the following tested applications.

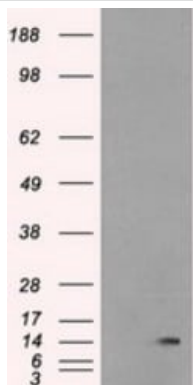
The application notes include recommended starting dilutions; optimal dilutions/concentrations should be determined by the end user.

Application	Abreviews	Notes
<b>WB</b>		1/500. Predicted molecular weight: 15 kDa.
<b>IHC-P</b>		1/50. Perform heat mediated antigen retrieval before commencing with IHC staining protocol.
<b>ICC/IF</b>		1/50.
<b>Flow Cyt (Intra)</b>		Use 1µg for 10 <sup>6</sup> cells.

## Target

<b>Function</b>	ID (inhibitor of DNA binding) HLH proteins lack a basic DNA-binding domain but are able to form heterodimers with other HLH proteins, thereby inhibiting DNA binding. ID-2 may be an inhibitor of tissue-specific gene expression.
<b>Tissue specificity</b>	Highly expressed in early fetal tissues, including those of the central nervous system.
<b>Sequence similarities</b>	Contains 1 basic helix-loop-helix (bHLH) domain.
<b>Developmental stage</b>	Found in most early fetal tissues but not in the corresponding mature tissues.
<b>Cellular localization</b>	Cytoplasm. Nucleus.

## Images



Western blot - Anti-ID2 antibody [OTI10C3]  
(ab90055)

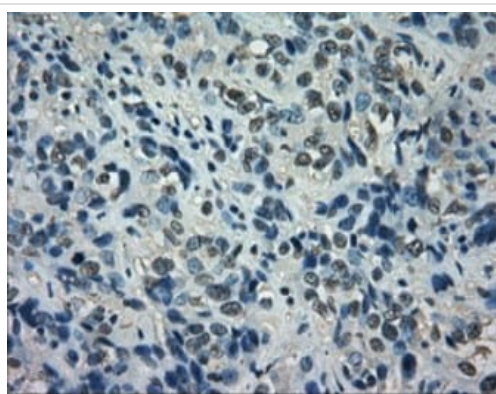
**All lanes** : Anti-ID2 antibody [OTI10C3] (ab90055) at 1/500 dilution

**Lane 1** : HEK-293T (Human epithelial cell line from embryonic kidney transformed with large T antigen) cells were transfected with the pCMV6-ENTRY control

**Lane 2** : HEK-293T cells were transfected with the pCMV6-ENTRY ID2 cDNA

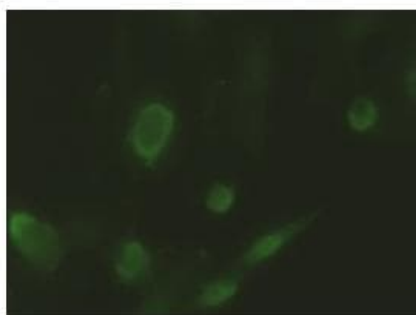
Lysates/proteins at 5 µg per lane.

**Predicted band size:** 15 kDa



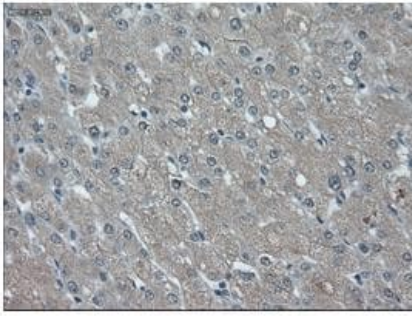
Immunohistochemistry (Formalin/PFA-fixed paraffin-embedded sections) - Anti-ID2 antibody [OTI10C3]  
(ab90055)

Paraffin-embedded human bladder carcinoma tissue stained for ID2 with ab90055 at a 1/50 dilution in immunohistochemical analysis. Heat-induced epitope retrieval by 10 mM citric buffer, pH 6.0, 100°C for 10 minutes.



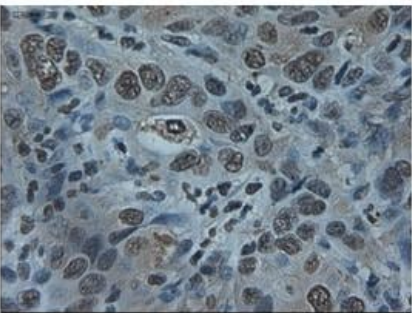
Immunocytochemistry/ Immunofluorescence - Anti-ID2 antibody [OTI10C3] (ab90055)

HeLa (Human epithelial cell line from cervix adenocarcinoma) cells stained for ID2 using ab90055 at a 1/50 dilution in ICC/IF.



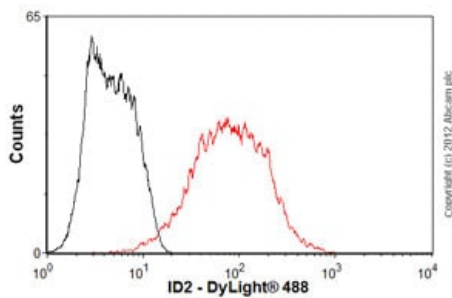
Immunohistochemistry (Formalin/PFA-fixed paraffin-embedded sections) - Anti-ID2 antibody [OTI10C3] (ab90055)

Paraffin-embedded human liver tissue stained for ID2 with ab90055 at a 1/50 dilution in immunohistochemical analysis. Heat-induced epitope retrieval by 10 mM citric buffer, pH 6.0, 100°C for 10 minutes.



Immunohistochemistry (Formalin/PFA-fixed paraffin-embedded sections) - Anti-ID2 antibody [OTI10C3] (ab90055)

Paraffin-embedded human liver carcinoma tissue stained for ID2 with ab90055 at a 1/50 dilution in immunohistochemical analysis. Heat-induced epitope retrieval by 10 mM citric buffer, pH 6.0, 100°C for 10 minutes.



Flow Cytometry (Intracellular) - Anti-ID2 antibody [OTI10C3] (ab90055)

Overlay histogram showing SH-SY5Y cells stained with ab90055 (red line). The cells were fixed with 4% paraformaldehyde (10 min) and then permeabilized with 0.1% PBS-Tween for 20 min. The cells were then incubated in 1x PBS / 10% normal goat serum / 0.3M glycine to block non-specific protein-protein interactions. The cells were then incubated with the antibody (ab90055, 1µg/1x10<sup>6</sup> cells) for 30 min at 22°C. The secondary antibody used was DyLight® 488 goat anti-mouse IgG (H+L) (**ab96879**) at 1/500 dilution for 30 min at 22°C. Isotype control antibody (black line) was mouse IgG2b [PLPV219] (**ab91366**, 2µg/1x10<sup>6</sup> cells) used under the same conditions. Acquisition of >5,000 events was performed. This antibody gave a positive signal in SH-SY5Y cells fixed with 80% methanol (5 min)/permeabilized with 0.1% PBS-Tween for 20 min used under the same conditions.

### **Our Abpromise to you: Quality guaranteed and expert technical support**

---

- Replacement or refund for products not performing as stated on the datasheet
- Valid for 12 months from date of delivery
- Response to your inquiry within 24 hours
- We provide support in Chinese, English, French, German, Japanese and Spanish
- Extensive multi-media technical resources to help you
- We investigate all quality concerns to ensure our products perform to the highest standards

If the product does not perform as described on this datasheet, we will offer a refund or replacement. For full details of the Abpromise, please visit <https://www.abcam.com/abpromise> or contact our technical team.

### **Terms and conditions**

---

- Guarantee only valid for products bought direct from Abcam or one of our authorized distributors