




Product datasheet

Anti-IDH3A antibody ab118278

1 Image

Overview

Product name	Anti-IDH3A antibody
Description	Goat polyclonal to IDH3A
Host species	Goat
Tested applications	Suitable for: WB
Species reactivity	Reacts with: Human Predicted to work with: Cow, Dog, Pig 
Immunogen	Synthetic peptide: DFTEEICRRVKDLD , corresponding to C terminal amino acids 353-366 of Human IDH3A (NP_005521.1).  Run BLAST with  Run BLAST with
Positive control	Recombinant Human IDH3A protein (ab114559) can be used as a positive control in WB. Human Lymph Nodes and Daudi lysates.
General notes	<p>The Life Science industry has been in the grips of a reproducibility crisis for a number of years. Abcam is leading the way in addressing this with our range of recombinant monoclonal antibodies and knockout edited cell lines for gold-standard validation. Please check that this product meets your needs before purchasing.</p> <p>If you have any questions, special requirements or concerns, please send us an inquiry and/or contact our Support team ahead of purchase. Recommended alternatives for this product can be found below, along with publications, customer reviews and Q&As</p>

Properties

Form	Liquid
Storage instructions	Shipped at 4°C. Upon delivery aliquot. Store at -20°C or -80°C. Avoid freeze / thaw cycle.
Storage buffer	pH: 7.30 Preservative: 0.02% Sodium azide Constituents: 99% Tris buffered saline, 0.5% BSA
Purity	Immunogen affinity purified
Purification notes	ab118278 is purified from Goat serum by ammonium sulphate precipitation followed by antigen affinity chromatography using the immunizing peptide.
Clonality	Polyclonal

Isotype

IgG

Applications

The Abpromise guarantee

Our **Abpromise guarantee** covers the use of ab118278 in the following tested applications.

The application notes include recommended starting dilutions; optimal dilutions/concentrations should be determined by the end user.

Application	Abreviews	Notes
WB		Use a concentration of 0.1 - 0.3 µg/ml. Detects a band of approximately 37 kDa (predicted molecular weight: 40 kDa). 1 hour primary incubation is recommended for this product.

Target

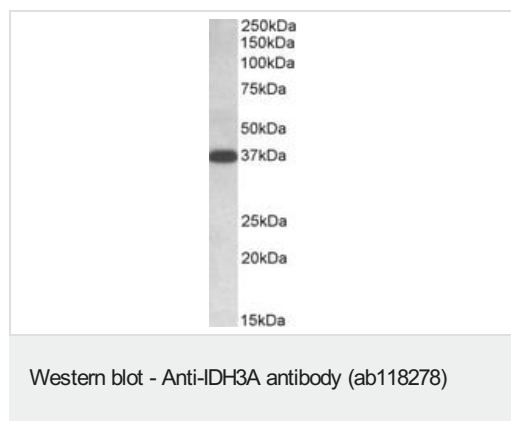
Sequence similarities

Belongs to the isocitrate and isopropylmalate dehydrogenases family.

Cellular localization

Mitochondrion.

Images



Anti-IDH3A antibody (ab118278) at 0.1 µg/ml + Human Lymph Node lysate (in RIPA buffer) at 35 µg

Developed using the ECL technique.

Predicted band size: 40 kDa

Observed band size: 37 kDa

Exposure time: 1 hour

Please note: All products are "FOR RESEARCH USE ONLY. NOT FOR USE IN DIAGNOSTIC PROCEDURES"

Our Abpromise to you: Quality guaranteed and expert technical support

- Replacement or refund for products not performing as stated on the datasheet
- Valid for 12 months from date of delivery
- Response to your inquiry within 24 hours
- We provide support in Chinese, English, French, German, Japanese and Spanish
- Extensive multi-media technical resources to help you
- We investigate all quality concerns to ensure our products perform to the highest standards

If the product does not perform as described on this datasheet, we will offer a refund or replacement. For full details of the Abpromise, please visit <https://www.abcam.com/abpromise> or contact our technical team.

Terms and conditions

- Guarantee only valid for products bought direct from Abcam or one of our authorized distributors