

## Product datasheet

### Anti-IFI16 antibody [EPR11767(B)] ab169788

Recombinant RabMAb

[2 References](#) [11 Images](#)

#### Overview

<b>Product name</b>	Anti-IFI16 antibody [EPR11767(B)]
<b>Description</b>	Rabbit monoclonal [EPR11767(B)] to IFI16
<b>Host species</b>	Rabbit
<b>Tested applications</b>	<b>Suitable for:</b> Flow Cyt (Intra), ICC/IF, IHC-P, WB <b>Unsuitable for:</b> IP
<b>Species reactivity</b>	<b>Reacts with:</b> Human
<b>Immunogen</b>	Synthetic peptide. This information is proprietary to Abcam and/or its suppliers.
<b>Positive control</b>	Recombinant Human IFI16 protein ( <a href="#">ab158724</a> ) can be used as a positive control in WB. Human tonsil and bone marrow tissues. Raji cells. IFN gamma-treated U937, U937, Jurkat and Raji cell lysates.
<b>General notes</b>	<p>This product is a recombinant monoclonal antibody, which offers several advantages including:</p> <ul style="list-style-type: none"> <li>- High batch-to-batch consistency and reproducibility</li> <li>- Improved sensitivity and specificity</li> <li>- Long-term security of supply</li> <li>- Animal-free production</li> </ul> <p>For more information <a href="#">see here</a>.</p> <p>Our RabMAb<sup>®</sup> technology is a patented hybridoma-based technology for making rabbit monoclonal antibodies. For details on our patents, please refer to <a href="#">RabMAb<sup>®</sup> patents</a>.</p> <p>Mouse, Rat: We have preliminary internal testing data to indicate this antibody may not react with these species. Please contact us for more information.</p>

#### Properties

<b>Form</b>	Liquid
<b>Storage instructions</b>	Shipped at 4°C. Store at +4°C short term (1-2 weeks). Upon delivery aliquot. Store at -20°C long term.
<b>Storage buffer</b>	<p>pH: 7.2</p> <p>Preservative: 0.01% Sodium azide</p> <p>Constituents: 9% PBS, 40% Glycerol (glycerin, glycerine), 0.05% BSA, 50% Tissue culture supernatant</p>

<b>Purity</b>	Protein A purified
<b>Clonality</b>	Monoclonal
<b>Clone number</b>	EPR11767(B)
<b>Isotype</b>	IgG

## Applications

**The Abpromise guarantee** Our **Abpromise guarantee** covers the use of ab169788 in the following tested applications.

The application notes include recommended starting dilutions; optimal dilutions/concentrations should be determined by the end user.

Application	Abreviews	Notes
Flow Cyt (Intra)		1/500.
ICC/IF		1/100 - 1/250.
IHC-P		1/100 - 1/250. Perform heat mediated antigen retrieval with citrate buffer pH 6 before commencing with IHC staining protocol. The use of an HRP/AP polymerized secondary antibody is recommended.
WB		1/1000 - 1/10000. Predicted molecular weight: 88 kDa.

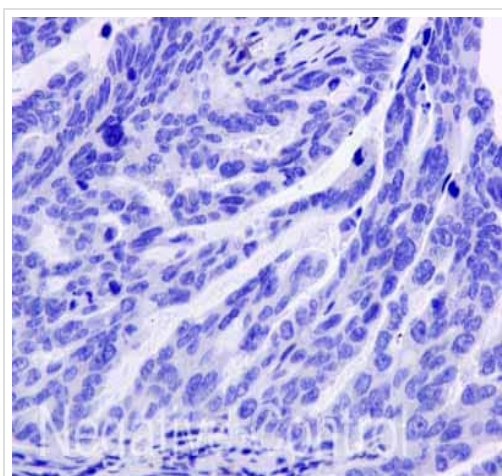
**Application notes** Is unsuitable for IP.

## Target

**Relevance** Interferon (IFN) Inducible 16 (IFI16) protein belongs to a family of HIN 200 human and mouse proteins. IFI16 is a nuclear protein containing regulatory domains such as DNA binding domain, transcriptional regulatory domain and DAPIN/PAAD domain. IFI16 has three isotypes A, B, and C (85-95 kDa), which arise as a result of mRNA alternative splicing. All are phosphorylated on serine and threonine residues and can homo and heterodimerize. Expression is restricted to the nuclei of hematopoietic cells, fibroblasts and epithelial cells. IFI16 expression in hematopoietic cells of myeloid lineage is tightly regulated and highly induced in the differentiation and proliferation of the cell. Due to its localization in the nucleus, regulation of protein expression, and ability to bind DNA, it is assumed that IFI16 has a role in transcription regulation of cell differentiation. In addition, it was found that IFI16 can act as a transcriptional repressor and is involved in regulation and activation of p53 in cancer cells.

**Cellular localization** Nucleus. Cytoplasm. Note: Cellular distribution is dependent on the acetylation status of the multipartite nuclear localization signal (NLS); NLS acetylation promotes cytoplasmic localization.

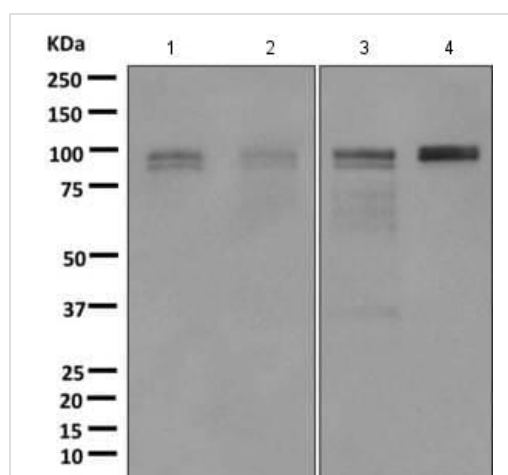
## Images



Immunohistochemistry (Formalin/PFA-fixed paraffin-embedded sections) - Anti-IFI16 antibody [EPR11767(B)] (ab169788)

ab169788 showing -ve staining in Human gastric adenocarcinoma tissue.

Perform heat mediated antigen retrieval with citrate buffer pH 6 before commencing with IHC staining protocol.



Western blot - Anti-IFI16 antibody [EPR11767(B)] (ab169788)

**All lanes :** Anti-IFI16 antibody [EPR11767(B)] (ab169788) at 1/1000 dilution

**Lane 1 :** U937 treated with IFN gamma cell lysate

**Lane 2 :** U937 cell lysate

**Lane 3 :** Jurkat cell lysate

**Lane 4 :** Raji cell lysate

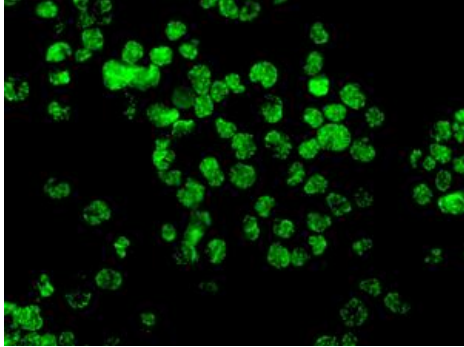
Lysates/proteins at 10 µg per lane.

### Secondary

**All lanes :** Standard HRP labeled goat anti-rabbit at 1/2000 dilution

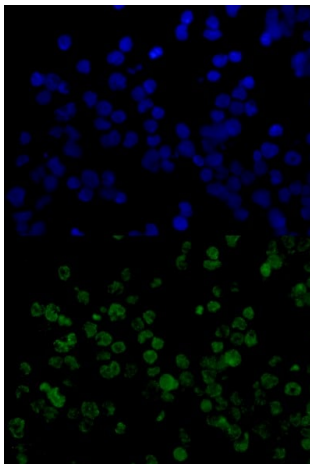
Developed using the ECL technique.

**Predicted band size:** 88 kDa



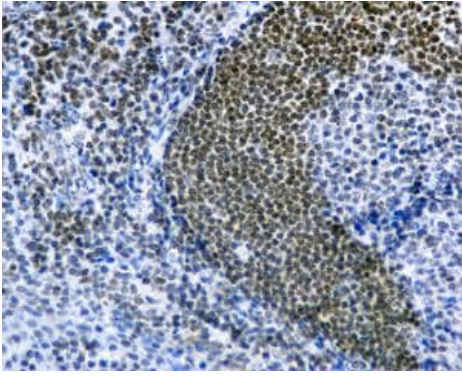
Immunocytochemistry/ Immunofluorescence - Anti-IFI16 antibody [EPR11767(B)] (ab169788)

Immunofluorescence analysis of Raji cells labeling IFI16, using ab169788 at a 1/100 dilution.



Immunocytochemistry/ Immunofluorescence - Anti-IFI16 antibody [EPR11767(B)] (ab169788)

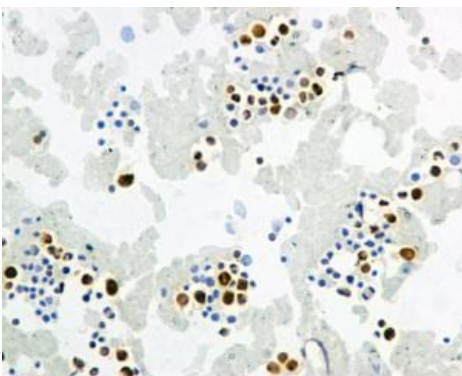
Immunocytochemistry/Immunofluorescence analysis of Jurkat (human acute T cell leukemia) cells labelling IFI16 with ab169788 at 1/100. Cells were fixed with 4% Paraformaldehyde and permeabilized with 0.1% Triton X-100. **ab150077**, Alexa Fluor<sup>®</sup> 488-conjugated goat anti-rabbit IgG (1/1000) was used as the secondary antibody. Nuclei were counterstained with DAPI (blue). The image shows nuclear staining on Jurkat cells.



Immunohistochemistry (Formalin/PFA-fixed paraffin-embedded sections) - Anti-IFI16 antibody  
[EPR11767(B)] (ab169788)

Immunohistochemical analysis of formalin-fixed, paraffin-embedded Human tonsil tissue labeling IFI16, using ab169788 at a 1/100 dilution.

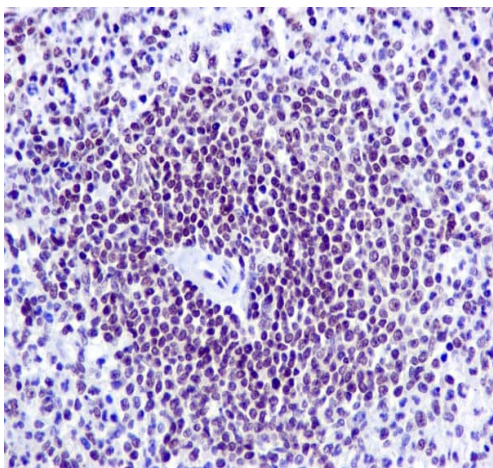
Perform heat mediated antigen retrieval with citrate buffer pH 6 before commencing with IHC staining protocol.



Immunohistochemistry (Formalin/PFA-fixed paraffin-embedded sections) - Anti-IFI16 antibody  
[EPR11767(B)] (ab169788)

Immunohistochemical analysis of formalin-fixed, paraffin-embedded Human bone marrow tissue labeling IFI16, using ab169788 at a 1/100 dilution.

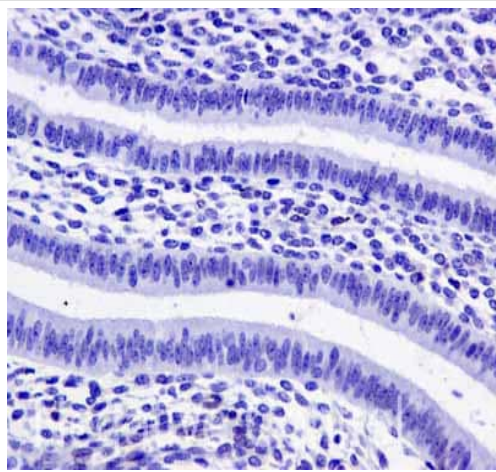
Perform heat mediated antigen retrieval with citrate buffer pH 6 before commencing with IHC staining protocol.



Immunohistochemistry (Formalin/PFA-fixed paraffin-embedded sections) - Anti-IFI16 antibody  
[EPR11767(B)] (ab169788)

ab169788 showing +ve staining in Human normal spleen tissue.

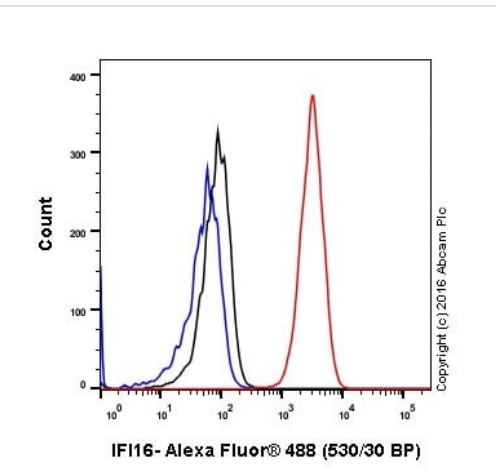
Perform heat mediated antigen retrieval with citrate buffer pH 6 before commencing with IHC staining protocol.



Immunohistochemistry (Formalin/PFA-fixed paraffin-embedded sections) - Anti-IFI16 antibody  
[EPR11767(B)] (ab169788)

ab169788 showing -ve staining in Human normal uterus tissue.

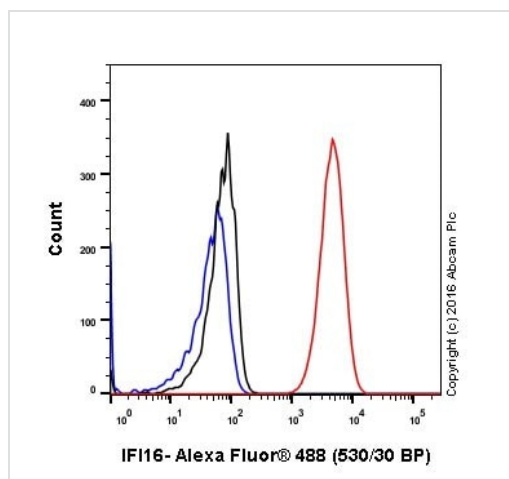
Perform heat mediated antigen retrieval with citrate buffer pH 6 before commencing with IHC staining protocol.



Flow Cytometry (Intracellular) - Anti-IFI16 antibody  
[EPR11767(B)] (ab169788)

Intracellular Flow Cytometry analysis of Raji (human Burkitt's lymphoma) cells labelling IFI16 (red) with ab169788 at dilution of 1/500. The secondary antibody used was Alexa Fluor<sup>®</sup> 488 goat-anti-rabbit IgG (1/2000). Cells were fixed with 4% paraformaldehyde. Isotype control antibody was ([ab172730](#)) Rabbit monoclonal IgG (black). The blue line shows cells without incubation with primary antibody and secondary antibody.









Flow Cytometry (Intracellular) - Anti-IFI16 antibody  
[EPR11767(B)] (ab169788)

Intracellular Flow Cytometry analysis of Jurkat (human acute T cell leukemia) cells labelling IFI16 (red) with ab169788 at dilution of 1/500. The secondary antibody used was Alexa Fluor® 488 goat-anti-rabbit IgG (1/2000). Cells were fixed with 4% paraformaldehyde. Isotype control antibody was (**ab172730**) Rabbit monoclonal IgG (black). The blue line shows cells without incubation with primary antibody and secondary antibody.

Why choose a recombinant antibody?

 <p><b>Research with confidence</b> Consistent and reproducible results</p>	 <p><b>Long-term and scalable supply</b> Recombinant technology</p>
 <p><b>Success from the first experiment</b> Confirmed specificity</p>	 <p><b>Ethical standards compliant</b> Animal-free production</p>

Anti-IFI16 antibody [EPR11767(B)] (ab169788)

**Please note:** All products are "FOR RESEARCH USE ONLY. NOT FOR USE IN DIAGNOSTIC PROCEDURES"

### Our Abpromise to you: Quality guaranteed and expert technical support

- Replacement or refund for products not performing as stated on the datasheet
- Valid for 12 months from date of delivery
- Response to your inquiry within 24 hours
- We provide support in Chinese, English, French, German, Japanese and Spanish
- Extensive multi-media technical resources to help you
- We investigate all quality concerns to ensure our products perform to the highest standards

If the product does not perform as described on this datasheet, we will offer a refund or replacement. For full details of the Abpromise, please visit <https://www.abcam.com/abpromise> or contact our technical team.

## **Terms and conditions**

---

- Guarantee only valid for products bought direct from Abcam or one of our authorized distributors