


Product datasheet

Anti-IgA Secretory Component antibody [SPM217] ab17921

[1 References](#) [1 Image](#)

Overview

Product name	Anti-IgA Secretory Component antibody [SPM217]
Description	Mouse monoclonal [SPM217] to IgA Secretory Component
Host species	Mouse
Tested applications	Suitable for: ICC/IF, IHC-P
Species reactivity	Reacts with: Human Predicted to work with: Rat 
Immunogen	Full length native protein (purified) corresponding to Human IgA Secretory Component. Secretory Component protein isolated from human colostrum.
Epitope	Not determined
Positive control	Stomach, Lung, or breast tumor.
General notes	<p>The Life Science industry has been in the grips of a reproducibility crisis for a number of years. Abcam is leading the way in addressing this with our range of recombinant monoclonal antibodies and knockout edited cell lines for gold-standard validation. Please check that this product meets your needs before purchasing.</p> <p>If you have any questions, special requirements or concerns, please send us an inquiry and/or contact our Support team ahead of purchase. Recommended alternatives for this product can be found below, along with publications, customer reviews and Q&As</p>

Properties

Form	Liquid
Storage instructions	Shipped at 4°C. Upon delivery aliquot and store at -20°C. Avoid repeated freeze / thaw cycles.
Storage buffer	pH: 7.2 Preservative: 0.09% Sodium azide Constituents: 0.0268% PBS, BSA
Purity	Protein G purified
Clonality	Monoclonal
Clone number	SPM217

Isotype	IgG1
Light chain type	kappa

Applications

The Abpromise guarantee Our **Abpromise guarantee** covers the use of ab17921 in the following tested applications. The application notes include recommended starting dilutions; optimal dilutions/concentrations should be determined by the end user.

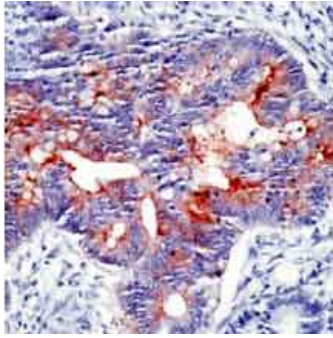
Application	Abreviews	Notes
ICC/IF		Use at an assay dependent concentration.
IHC-P		1/50. Perform enzymatic antigen retrieval before commencing with IHC staining protocol.

Target

Relevance

IgA has two subclasses (IgA1 and IgA2) and can be produced as a monomeric as well as a dimeric form. The IgA dimeric form is the most prevalent and is also called secretory IgA (sIgA). The secretory component of sIgA protects the immunoglobulin from being degraded by proteolytic enzymes, thus sIgA can survive in the harsh gastrointestinal tract environment and provide protection against microbes that multiply in body secretions. sIgA can also inhibit inflammatory effects of other immunoglobulins. Secretory component is a proteolytic cleavage product of the polymeric immunoglobulin receptor which remains associated with dimeric IgA in sero-mucus secretions. Polymeric IgA binds to the polymeric immunoglobulin receptor on the basolateral surface of epithelial cells and is taken up into the cell via transcytosis. The receptor-IgA complex passes through the cellular compartments before being secreted on the luminal surface of the epithelial cells, still attached to the receptor. Proteolysis of the receptor occurs and the dimeric IgA molecule, along with the secretory component, are free to diffuse throughout the lumen. Secretory components wrap around two IgA units joined by a J chain protein fragment, resulting in a >--< configuration, with each of the two antigen binding regions of the two constituent y-shaped antibodies exposed. One identified function of secretory components is to protect IgA antibodies from degradation by the gastric acids and enzymes of the digestive system. This property is especially important in the transfer of immune system components during breastfeeding.

Images



Human colon carcinoma stained with ab17921.

Immunohistochemistry (Formalin/PFA-fixed paraffin-embedded sections) - Anti-IgA Secretory Component antibody [SPM217] (ab17921)

Please note: All products are "FOR RESEARCH USE ONLY. NOT FOR USE IN DIAGNOSTIC PROCEDURES"

Our Abpromise to you: Quality guaranteed and expert technical support

- Replacement or refund for products not performing as stated on the datasheet
- Valid for 12 months from date of delivery
- Response to your inquiry within 24 hours
- We provide support in Chinese, English, French, German, Japanese and Spanish
- Extensive multi-media technical resources to help you
- We investigate all quality concerns to ensure our products perform to the highest standards

If the product does not perform as described on this datasheet, we will offer a refund or replacement. For full details of the Abpromise, please visit <https://www.abcam.com/abpromise> or contact our technical team.

Terms and conditions

- Guarantee only valid for products bought direct from Abcam or one of our authorized distributors