

Product datasheet

Anti-IGF2 antibody ab18954

[1 References](#) [2 Images](#)

Overview

Product name	Anti-IGF2 antibody
Description	Rabbit polyclonal to IGF2
Host species	Rabbit
Tested applications	Suitable for: Sandwich ELISA, WB
Species reactivity	Reacts with: Recombinant fragment
Immunogen	Recombinant full length protein corresponding to Human IGF2. 67 amino acid residues
General notes	<p>This product is manufactured by BioVision, an Abcam company and was previously called 5122 IGF-II Antibody. 5122-100 is the same size as the 100 µg size of ab18954.</p> <p>The Life Science industry has been in the grips of a reproducibility crisis for a number of years. Abcam is leading the way in addressing this with our range of recombinant monoclonal antibodies and knockout edited cell lines for gold-standard validation. Please check that this product meets your needs before purchasing.</p> <p>If you have any questions, special requirements or concerns, please send us an inquiry and/or contact our Support team ahead of purchase. Recommended alternatives for this product can be found below, along with publications, customer reviews and Q&As</p>

Properties

Form	Liquid
Storage instructions	Shipped at 4°C. Upon delivery aliquot and store at -20°C. Avoid freeze / thaw cycles.
Storage buffer	pH: 7.20 Preservative: 0.01% Thimerosal (merthiolate) Constituents: PBS, 30% Glycerol (glycerin, glycerine), 0.5% BSA
Purity	Immunogen affinity purified
Clonality	Polyclonal
Isotype	IgG

Applications

The Abpromise guarantee Our **Abpromise guarantee** covers the use of ab18954 in the following tested applications.

The application notes include recommended starting dilutions; optimal dilutions/concentrations should be determined by the end user.

Application	Abreviews	Notes
Sandwich ELISA		Use a concentration of 0.5 µg/ml. Can be paired for Sandwich ELISA with Rat monoclonal [RM0100-3J42] to IGF2 (ab86485) . For sandwich ELISA, use this antibody as Detection at 0.5µg/ml with ab86485 as Capture.
WB		Use a concentration of 0.5 - 4 µg/ml. Predicted molecular weight: 20 kDa.

Target

Function

The insulin-like growth factors possess growth-promoting activity. In vitro, they are potent mitogens for cultured cells. IGF-II is influenced by placental lactogen and may play a role in fetal development.

Preptin undergoes glucose-mediated co-secretion with insulin, and acts as physiological amplifier of glucose-mediated insulin secretion. Exhibits osteogenic properties by increasing osteoblast mitogenic activity through phosphoactivation of MAPK1 and MAPK3.

Involvement in disease

Epigenetic changes of DNA hypomethylation in IGF2 are a cause of Silver-Russell syndrome (SIRS) [MIM:180860]. SIRS is a clinically heterogeneous condition characterized by severe intrauterine growth retardation, poor postnatal growth, craniofacial features such as a triangular shaped face and a broad forehead, body asymmetry, and a variety of minor malformations.

Sequence similarities

Belongs to the insulin family.

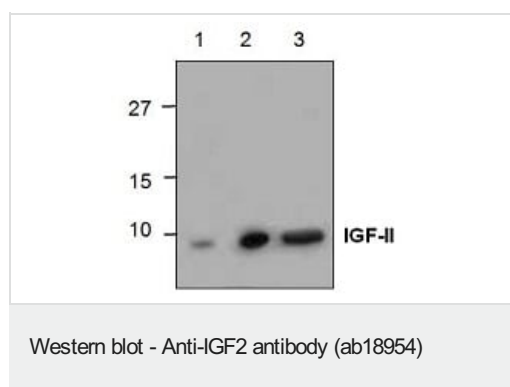
Post-translational modifications

O-glycosylated with a core 1 or possibly core 8 glycan.

Cellular localization

Secreted.

Images

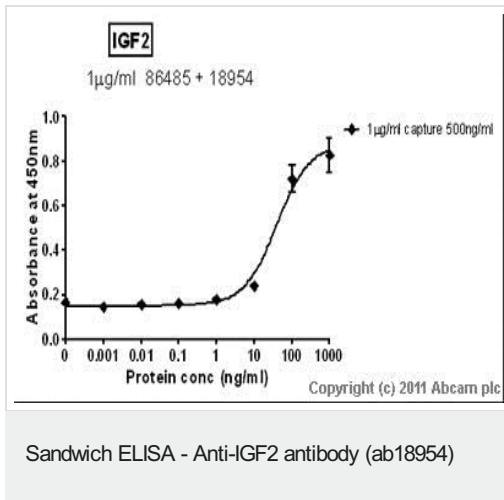


Western blot analysis of IGF-II using recombinant human IGF-II.

Lane 1;50ng

Lane 2;250 ng

Lane 3;500 ng



Standard Curve for IGF2 (Analyte: **ab9575**) dilution range 1pg/ml to 1ug/ml using Capture Antibody Rat monoclonal [RM0100-3J42] to IGF2 (**ab86485**) at 1ug/ml and Detector Antibody Rabbit polyclonal to IGF2 (ab18954) at 0.5ug/ml.

Please note: All products are "FOR RESEARCH USE ONLY. NOT FOR USE IN DIAGNOSTIC PROCEDURES"

Our Abpromise to you: Quality guaranteed and expert technical support

- Replacement or refund for products not performing as stated on the datasheet
- Valid for 12 months from date of delivery
- Response to your inquiry within 24 hours
- We provide support in Chinese, English, French, German, Japanese and Spanish
- Extensive multi-media technical resources to help you
- We investigate all quality concerns to ensure our products perform to the highest standards

If the product does not perform as described on this datasheet, we will offer a refund or replacement. For full details of the Abpromise, please visit <https://www.abcam.com/abpromise> or contact our technical team.

Terms and conditions

- Guarantee only valid for products bought direct from Abcam or one of our authorized distributors