




Product datasheet

Anti-IGFBP3 antibody ab77635

★★★★★ [1 Abreviews](#) [6 References](#) [1 Image](#)

Overview

Product name	Anti-IGFBP3 antibody
Description	Goat polyclonal to IGFBP3
Host species	Goat
Specificity	ab77635 is expected to recognize both reported isoforms (NP_001013416.1 and NP_000589.2).
Tested applications	Suitable for: WB
Species reactivity	Reacts with: Human Predicted to work with: Mouse, Rat, Horse, Cow, Dog 
Immunogen	Synthetic peptide: C-RYKVDYESQSTDTQN , from the internal region of human IGFBP3 (NP_001013416.1; NP_000589.2).  Run BLAST with  Run BLAST with
General notes	<p>The Life Science industry has been in the grips of a reproducibility crisis for a number of years. Abcam is leading the way in addressing this with our range of recombinant monoclonal antibodies and knockout edited cell lines for gold-standard validation. Please check that this product meets your needs before purchasing.</p> <p>If you have any questions, special requirements or concerns, please send us an inquiry and/or contact our Support team ahead of purchase. Recommended alternatives for this product can be found below, along with publications, customer reviews and Q&As</p>

Properties

Form	Liquid
Storage instructions	Shipped at 4°C. Upon delivery aliquot and store at -20°C. Avoid freeze / thaw cycles.
Storage buffer	pH: 7.30 Preservative: 0.02% Sodium azide Constituents: 0.5% BSA, 0.5% Tris buffered saline
Purity	Immunogen affinity purified
Purification notes	ab77635 is purified from goat serum by ammonium sulphate precipitation followed by antigen affinity chromatography using the immunising peptide.

Clonality	Polyclonal
Isotype	IgG

Applications

The Abpromise guarantee Our **Abpromise guarantee** covers the use of ab77635 in the following tested applications.
The application notes include recommended starting dilutions; optimal dilutions/concentrations should be determined by the end user.

Application	Abreviews	Notes
WB	★★★★★ (1)	

Application notes

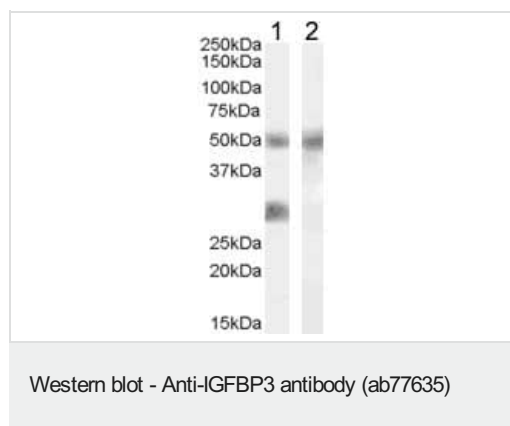
Peptide ELISA: Use at an assay dependent dilution. Antibody detection limit dilution 1/64000.
WB: Use at a concentration of 0.02 - 0.06 µg/ml. Predicted molecular weight: 32 kDa.

Not yet tested in other applications.
Optimal dilutions/concentrations should be determined by the end user.

Target

Function	IGF-binding proteins prolong the half-life of the IGFs and have been shown to either inhibit or stimulate the growth promoting effects of the IGFs on cell culture. They alter the interaction of IGFs with their cell surface receptors.
Tissue specificity	Expressed by most tissues. Present in plasma.
Sequence similarities	Contains 1 IGFBP N-terminal domain. Contains 1 thyroglobulin type-1 domain.
Developmental stage	IGFBP3 levels are higher during extrauterine life and peak during puberty.
Domain	The thyroglobulin type-1 domain mediates interaction with HN.
Post-translational modifications	Phosphorylation sites are present in the extracellular medium.
Cellular localization	Secreted.

Images



All lanes : Anti-IGFBP3 antibody (ab77635) at 0.02 µg/ml

Lane 1 : human breast cancer lysate (in RIPA buffer)

Lane 2 : human breast cancer lysate (in RIPA buffer) with immunizing peptide

Lysates/proteins at 35 µg per lane.

Predicted band size: 32 kDa

Observed band size: 28 kDa

Additional bands at: 50 kDa (possible non-specific binding)

The additional band of 50 kDa was consistently observed. However this band was not blocked by the immunizing peptide and it is therefore a non specific signal.

Please note: All products are "FOR RESEARCH USE ONLY. NOT FOR USE IN DIAGNOSTIC PROCEDURES"

Our Abpromise to you: Quality guaranteed and expert technical support

- Replacement or refund for products not performing as stated on the datasheet
- Valid for 12 months from date of delivery
- Response to your inquiry within 24 hours
- We provide support in Chinese, English, French, German, Japanese and Spanish
- Extensive multi-media technical resources to help you
- We investigate all quality concerns to ensure our products perform to the highest standards

If the product does not perform as described on this datasheet, we will offer a refund or replacement. For full details of the Abpromise, please visit <https://www.abcam.com/abpromise> or contact our technical team.

Terms and conditions

- Guarantee only valid for products bought direct from Abcam or one of our authorized distributors