

## Product datasheet

# Anti-IgG antibody [R10Z8E9] ab124055

Recombinant

[5 References](#) [3 Images](#)

### Overview

---

<b>Product name</b>	Anti-IgG antibody [R10Z8E9]
<b>Description</b>	Mouse monoclonal [R10Z8E9] to IgG
<b>Host species</b>	Mouse
<b>Tested applications</b>	<b>Suitable for:</b> Indirect ELISA, WB <b>Unsuitable for:</b> IHC-P
<b>Species reactivity</b>	<b>Reacts with:</b> Human
<b>Immunogen</b>	Full length native protein (purified). This information is proprietary to Abcam and/or its suppliers.
<b>Positive control</b>	Indirect ELISA: Human IgG1. WB: Human serum lysate.
<b>General notes</b>	<p>This product has switched from a hybridoma to recombinant production method on 21st September 2020.</p> <p>This antibody clone is manufactured by Abcam. If you require a custom buffer formulation or conjugation for your experiments, please contact <a href="mailto:orders@abcam.com">orders@abcam.com</a>.</p> <p>This product is a recombinant monoclonal antibody, which offers several advantages including:</p> <ul style="list-style-type: none"><li>- High batch-to-batch consistency and reproducibility</li><li>- Improved sensitivity and specificity</li><li>- Long-term security of supply</li><li>- Animal-free production</li></ul> <p>For more information <a href="#">see here</a>.</p>

### Properties

---

<b>Form</b>	Liquid
<b>Storage instructions</b>	Shipped at 4°C. Store at +4°C short term (1-2 weeks). Upon delivery aliquot. Store at -20°C long term. Avoid freeze / thaw cycle.
<b>Storage buffer</b>	Preservative: 0.01% Sodium azide Constituents: 59.04% PBS, 40% Glycerol (glycerin, glycerine), 0.05% BSA
<b>Purity</b>	Protein A purified
<b>Clonality</b>	Monoclonal
<b>Clone number</b>	R10Z8E9

Isotype

IgG1

## Applications

### The Abpromise guarantee

Our **Abpromise guarantee** covers the use of ab124055 in the following tested applications.

The application notes include recommended starting dilutions; optimal dilutions/concentrations should be determined by the end user.

Application	Abreviews	Notes
Indirect ELISA		Use at an assay dependent concentration.
WB		1/1000. Predicted molecular weight: 36 kDa.

### Application notes

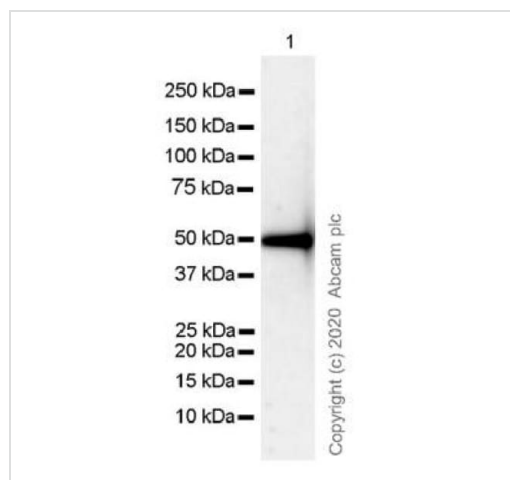
Is unsuitable for IHC-P.

## Target

### Cellular localization

Secreted

## Images



Western blot - Anti-IgG antibody [R10Z8E9]  
(ab124055)

Anti-IgG antibody [R10Z8E9] (ab124055) at 1/1000 dilution +  
Human serum lysate at 10 µg

### Secondary

VeriBlot for IP Detection Reagent (HRP) ([ab131366](#))

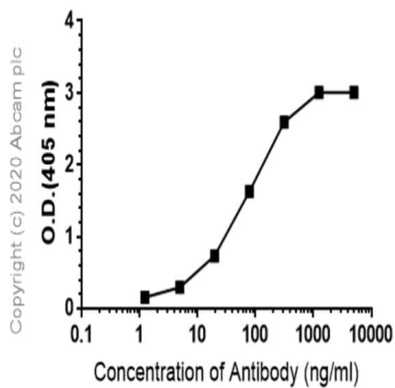
**Predicted band size:** 36 kDa

**Exposure time:** 3 minutes

Blocking and diluting buffer and concentration: 5% NFDm/TBST.

Expected MW: 50 kDa.



### Indirect ELISA antibody dose-response curve



Indirect ELISA - Anti-IgG antibody [R10Z8E9]  
(ab124055)

50ng Human IgG1 (50µL at 1000ng/mL) was coated onto 96-wells. Serial dilutions (0, 0.001, 0.005, 0.020, 0.078, 0.313, 1.25, 5µg/mL) of ab124055 (50µL) were incubated with Human IgG1 for 60 minutes by shaking. This was followed by adding goat anti-mouse IgG, (H+L), phosphatase-conjugated secondary antibody 1/1000 diluted (50µL) into each well and incubating for another 40 minutes. After washing, 50 µL of PNPP was added and incubated for 13 minutes without shaking for color development. OD was read at 405nm within 5 minutes.

### Why choose a recombinant antibody?

 <p><b>Research with confidence</b> Consistent and reproducible results</p>	 <p><b>Long-term and scalable supply</b> Recombinant technology</p>
 <p><b>Success from the first experiment</b> Confirmed specificity</p>	 <p><b>Ethical standards compliant</b> Animal-free production</p>

Anti-IgG antibody [R10Z8E9] (ab124055)

**Please note:** All products are "FOR RESEARCH USE ONLY. NOT FOR USE IN DIAGNOSTIC PROCEDURES"

### Our Abpromise to you: Quality guaranteed and expert technical support

- Replacement or refund for products not performing as stated on the datasheet
- Valid for 12 months from date of delivery
- Response to your inquiry within 24 hours

- We provide support in Chinese, English, French, German, Japanese and Spanish
- Extensive multi-media technical resources to help you
- We investigate all quality concerns to ensure our products perform to the highest standards

If the product does not perform as described on this datasheet, we will offer a refund or replacement. For full details of the Abpromise, please visit <https://www.abcam.com/abpromise> or contact our technical team.

### **Terms and conditions**

---

- Guarantee only valid for products bought direct from Abcam or one of our authorized distributors