



Product datasheet

Anti-IGLC2 antibody [5E12B9] ab233563

[1 References](#) [4 Images](#)

Overview

Product name	Anti-IGLC2 antibody [5E12B9]
Description	Mouse monoclonal [5E12B9] to IGLC2
Host species	Mouse
Tested applications	Suitable for: WB, IHC-P
Species reactivity	Reacts with: Human
Immunogen	Recombinant full length protein corresponding to Human IGLC2 aa 1 to the C-terminus. Expressed in E. coli. Database link: P01842
	 Run BLAST with  Run BLAST with
Positive control	WB: Recombinant human IGLC2 protein (amino acids 1-106). IGLC2 (amino acids: 1-106) - hlgGfC transfected HEK-293 cell lysate. IHC-P: Human colon tissue and endometrial cancer tissue.
General notes	<p>The Life Science industry has been in the grips of a reproducibility crisis for a number of years. Abcam is leading the way in addressing this with our range of recombinant monoclonal antibodies and knockout edited cell lines for gold-standard validation. Please check that this product meets your needs before purchasing.</p> <p>If you have any questions, special requirements or concerns, please send us an inquiry and/or contact our Support team ahead of purchase. Recommended alternatives for this product can be found below, along with publications, customer reviews and Q&As</p>

Properties

Form	Liquid
Storage instructions	Shipped at 4°C. Store at +4°C short term (1-2 weeks). Upon delivery aliquot. Store at -20°C long term. Avoid freeze / thaw cycle.
Storage buffer	Preservative: 0.05% Sodium azide Constituent: PBS
Purity	Protein G purified
Purification notes	Purified from TCS.
Clonality	Monoclonal
Clone number	5E12B9

Isotype IgG1

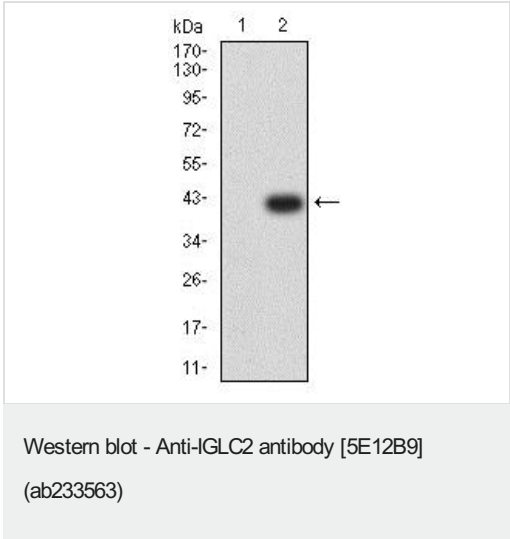
Applications

The **Abpromise guarantee** Our **Abpromise guarantee** covers the use of ab233563 in the following tested applications. The application notes include recommended starting dilutions; optimal dilutions/concentrations should be determined by the end user.

Application	Abreviews	Notes
WB		1/500 - 1/2000. Predicted molecular weight: 11 kDa.
IHC-P		1/200 - 1/1000.

Target

Images

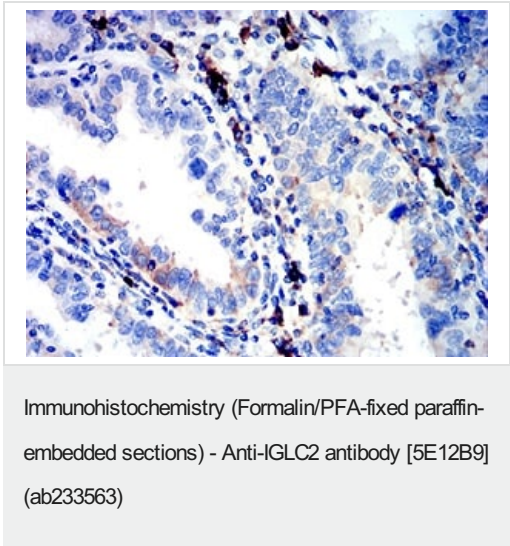


All lanes : Anti-IGLC2 antibody [5E12B9] (ab233563) at 1/500 dilution

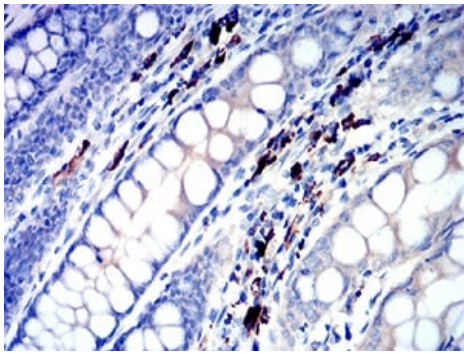
Lane 1 : HEK-293 (Human epithelial cell line from embryonic kidney) cell lysate

Lane 2 : IGLC2 (amino acids: 1-106) - hlgGFc transfected HEK-293 (Human epithelial cell line from embryonic kidney) cell lysate

Predicted band size: 11 kDa

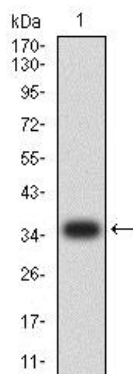


Paraffin-embedded human endometrial cancer tissue stained for IGLC2 with ab233563 at a 1/200 dilution in immunohistochemical analysis. DAB staining.



Immunohistochemistry (Formalin/PFA-fixed paraffin-embedded sections) - Anti-IGLC2 antibody [5E12B9] (ab233563)

Paraffin-embedded human colon tissue stained for IGLC2 with ab233563 at a 1/200 dilution in immunohistochemical analysis. DAB staining.



Western blot - Anti-IGLC2 antibody [5E12B9] (ab233563)

Anti-IGLC2 antibody [5E12B9] (ab233563) at 1/500 dilution + Recombinant human IGLC2 protein (amino acids 1-106)

Predicted band size: 11 kDa

(Expected MW is 36.8 kDa)

Please note: All products are "FOR RESEARCH USE ONLY. NOT FOR USE IN DIAGNOSTIC PROCEDURES"

Our Abpromise to you: Quality guaranteed and expert technical support

- Replacement or refund for products not performing as stated on the datasheet
- Valid for 12 months from date of delivery
- Response to your inquiry within 24 hours
- We provide support in Chinese, English, French, German, Japanese and Spanish
- Extensive multi-media technical resources to help you
- We investigate all quality concerns to ensure our products perform to the highest standards

If the product does not perform as described on this datasheet, we will offer a refund or replacement. For full details of the Abpromise, please visit <https://www.abcam.com/abpromise> or contact our technical team.

Terms and conditions

- Guarantee only valid for products bought direct from Abcam or one of our authorized distributors