

## Product datasheet

### Anti-IL-1 alpha antibody ab9614

★★★★☆ [3 Abreviews](#) [19 References](#) [3 Images](#)

#### Overview

<b>Product name</b>	Anti-IL-1 alpha antibody
<b>Description</b>	Rabbit polyclonal to IL-1 alpha
<b>Host species</b>	Rabbit
<b>Tested applications</b>	<b>Suitable for:</b> ICC/IF, Sandwich ELISA, WB, Neutralising, IHC-P, ELISA
<b>Species reactivity</b>	<b>Reacts with:</b> Human
<b>Immunogen</b>	Recombinant full length protein corresponding to Human IL-1 alpha. Highly pure (>98%) recombinant hIL-1a (human Interleukin-1-alpha). Database link: <a href="#">P01583</a>
<b>Positive control</b>	IHC-P: Human liver tissue; Recombinant human IL-1 alpha protein ( <a href="#">ab9615</a> ) can be used as a positive control in WB.
<b>General notes</b>	<p>This product is no longer batch tested in IHC, for an IHC validated antibody please see <a href="#">ab7632</a></p> <p>The Life Science industry has been in the grips of a reproducibility crisis for a number of years. Abcam is leading the way in addressing this with our range of recombinant monoclonal antibodies and knockout edited cell lines for gold-standard validation. Please check that this product meets your needs before purchasing.</p> <p>If you have any questions, special requirements or concerns, please send us an inquiry and/or contact our Support team ahead of purchase. Recommended alternatives for this product can be found below, along with publications, customer reviews and Q&amp;As</p>

#### Properties

<b>Form</b>	Lyophilized: Reconstitute with 200µl of sterile water. The reconstituted antibody is stable for at least 2 weeks at 2-8°C and at least 6 months at -20°C
<b>Storage instructions</b>	Shipped at 4°C. Store at -20°C.
<b>Storage buffer</b>	No preservative, sterile filtered
<b>Purity</b>	Immunogen affinity purified
<b>Clonality</b>	Polyclonal
<b>Isotype</b>	unknown
<b>Light chain type</b>	unknown

## Applications

### The Abpromise guarantee

Our **Abpromise guarantee** covers the use of ab9614 in the following tested applications.

The application notes include recommended starting dilutions; optimal dilutions/concentrations should be determined by the end user.

Application	Abreviews	Notes
ICC/IF	★★★★★ (1)	Use at an assay dependent concentration.
Sandwich ELISA		Use at an assay dependent concentration. To detect IL-1 alpha by sandwich ELISA (using 100 µl/well antibody solution) a concentration of 0.5 - 2.0 µg/ml of this antibody is required. This antigen affinity purified antibody, in conjunction with <b>ab271226</b> as a detection antibody, allows the detection of at least 0.2 - 0.4 ng/well of recombinant IL-1 alpha.
WB	★★★★★ (1)	Use at an assay dependent concentration. To detect hIL-1a by Western Blot analysis this antibody can be used at a concentration of 0.1 - 0.2 µg/ml. Used in conjunction with compatible secondary reagents the detection limit for recombinant hIL-1a is 1.5 - 3.0 ng/lane, under either reducing or non-reducing conditions.
Neutralising		Use at an assay dependent concentration. To yield one-half maximal inhibition [ND50] of the biological activity of hIL-1a (20 ng/ml), a concentration of 1.0 - 2.0 µg/ml of this antibody is required.
IHC-P		Use a concentration of 1 µg/ml. Perform heat mediated antigen retrieval before commencing with IHC staining protocol.
ELISA		Use at an assay dependent concentration. To detect hIL-1a by direct ELISA (using 100 µl/well antibody solution) a concentration of at least 0.5 µg/ml of this antibody is required. This antigen affinity purified antibody, in conjunction with compatible secondary reagents, allows the detection of 0.2 - 0.4 ng/well of recombinant hIL-1a.

## Target

### Function

Produced by activated macrophages, IL-1 stimulates thymocyte proliferation by inducing IL-2 release, B-cell maturation and proliferation, and fibroblast growth factor activity. IL-1 proteins are involved in the inflammatory response, being identified as endogenous pyrogens, and are reported to stimulate the release of prostaglandin and collagenase from synovial cells.

### Sequence similarities

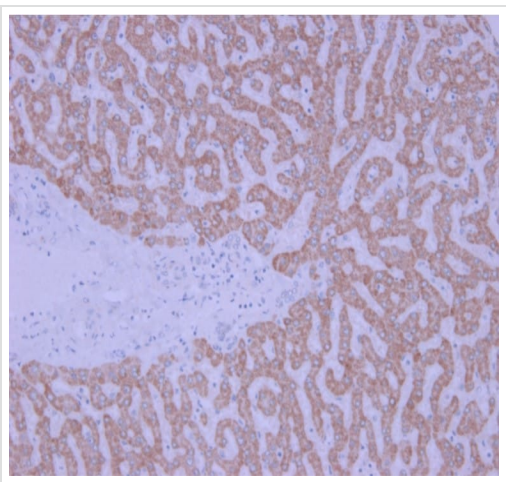
Belongs to the IL-1 family.

### Domain

The similarity among the IL-1 precursors suggests that the amino ends of these proteins serve some as yet undefined function.

### Cellular localization

Secreted. The lack of a specific hydrophobic segment in the precursor sequence suggests that IL-1 is released by damaged cells or is secreted by a mechanism differing from that used for other secretory proteins.

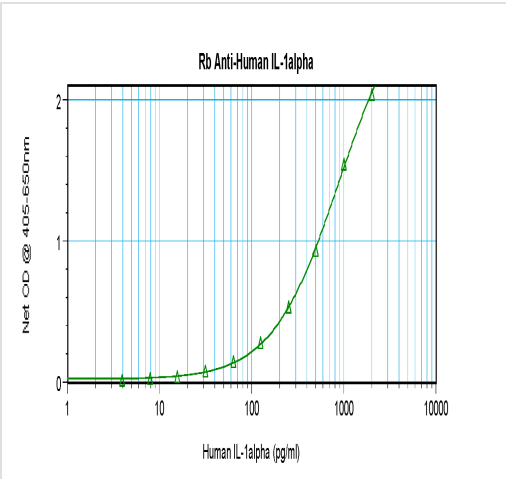


Immunohistochemistry (Formalin/PFA-fixed paraffin-embedded sections) - Anti-IL-1 alpha antibody (ab9614)

Immunohistochemistry (Formalin/PFA-fixed paraffin-embedded sections) analysis of human liver tissue labelling IL-1 alpha with ab9614 at 1 µg/mL (45 minute incubation at room temperature). Heat mediated antigen retrieval was performed using a buffer at pH 6. An HRP-labeled polymer detection system was used with a DAB chromogen.



Western blot - Anti-IL-1 alpha antibody (ab9614)



Sandwich ELISA - Anti-IL-1 alpha antibody (ab9614)

**Please note:** All products are "FOR RESEARCH USE ONLY. NOT FOR USE IN DIAGNOSTIC PROCEDURES"

### **Our Abpromise to you: Quality guaranteed and expert technical support**

---

- Replacement or refund for products not performing as stated on the datasheet
- Valid for 12 months from date of delivery
- Response to your inquiry within 24 hours
- We provide support in Chinese, English, French, German, Japanese and Spanish
- Extensive multi-media technical resources to help you
- We investigate all quality concerns to ensure our products perform to the highest standards

If the product does not perform as described on this datasheet, we will offer a refund or replacement. For full details of the Abpromise, please visit <https://www.abcam.com/abpromise> or contact our technical team.

### **Terms and conditions**

---

- Guarantee only valid for products bought direct from Abcam or one of our authorized distributors