

## Product datasheet

# Anti-IL-10 antibody [B-S10] - BSA and Azide free ab47222

★★★★☆ [1 Abreviews](#) [1 References](#) [1 Image](#)

### Overview

---

<b>Product name</b>	Anti-IL-10 antibody [B-S10] - BSA and Azide free
<b>Description</b>	Mouse monoclonal [B-S10] to IL-10 - BSA and Azide free
<b>Host species</b>	Mouse
<b>Specificity</b>	This antibody recognizes both natural and recombinant IL-10. Blocks IL-10 induced inhibition of IL-6 synthesis on LPS activated monocytes.
<b>Tested applications</b>	<b>Suitable for:</b> Functional Studies
<b>Species reactivity</b>	<b>Reacts with:</b> Human
<b>Immunogen</b>	Recombinant full length protein corresponding to Human IL-10.
<b>General notes</b>	<p>The Life Science industry has been in the grips of a reproducibility crisis for a number of years. Abcam is leading the way in addressing this with our range of recombinant monoclonal antibodies and knockout edited cell lines for gold-standard validation. Please check that this product meets your needs before purchasing.</p> <p>If you have any questions, special requirements or concerns, please send us an inquiry and/or contact our Support team ahead of purchase. Recommended alternatives for this product can be found below, along with publications, customer reviews and Q&amp;As</p>

### Properties

---

<b>Form</b>	Liquid
<b>Storage instructions</b>	Shipped at 4°C. Store at +4°C short term (1-2 weeks). Upon delivery aliquot. Store at -20°C or -80°C. Avoid freeze / thaw cycle.
<b>Storage buffer</b>	pH: 7.30 Constituent: 100% PBS
<b>Carrier free</b>	Yes
<b>Purity</b>	Ion Exchange Chromatography
<b>Purification notes</b>	This antibody is sterile filtered through 0.22 µm and treated to remove endotoxins. It is carrier and preservative free.

<b>Clonality</b>	Monoclonal
<b>Clone number</b>	B-S10
<b>Myeloma</b>	x63-Ag8.653
<b>Isotype</b>	IgG1
<b>Light chain type</b>	kappa

## Applications

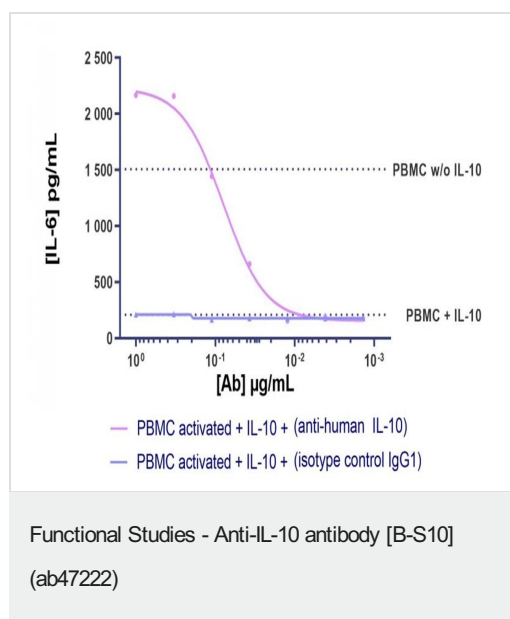
**The Abpromise guarantee** Our **Abpromise guarantee** covers the use of ab47222 in the following tested applications. The application notes include recommended starting dilutions; optimal dilutions/concentrations should be determined by the end user.

Application	Abreviews	Notes
<b>Functional Studies</b>		Use at an assay dependent concentration.

## Target

<b>Function</b>	Inhibits the synthesis of a number of cytokines, including IFN-gamma, IL-2, IL-3, TNF and GM-CSF produced by activated macrophages and by helper T-cells.
<b>Tissue specificity</b>	Produced by a variety of cell lines, including T-cells, macrophages, mast cells and other cell types.
<b>Sequence similarities</b>	Belongs to the IL-10 family.
<b>Cellular localization</b>	Secreted.

## Images



The isotype control antibody has no effect on IL-10 inhibition of IL-6 synthesis whilst the B-S10 antibody (anti-human IL-10) increases IL-6 secretion by PBMC activated LPS. B-S10 blocks the inhibition of IL-6 synthesis by IL-10 and increases IL-6 synthesis.

**Please note:** All products are "FOR RESEARCH USE ONLY. NOT FOR USE IN DIAGNOSTIC PROCEDURES"

## **Our Abpromise to you: Quality guaranteed and expert technical support**

---

- Replacement or refund for products not performing as stated on the datasheet
- Valid for 12 months from date of delivery
- Response to your inquiry within 24 hours
  
- We provide support in Chinese, English, French, German, Japanese and Spanish
- Extensive multi-media technical resources to help you
- We investigate all quality concerns to ensure our products perform to the highest standards

If the product does not perform as described on this datasheet, we will offer a refund or replacement. For full details of the Abpromise, please visit <https://www.abcam.com/abpromise> or contact our technical team.

## **Terms and conditions**

---

- Guarantee only valid for products bought direct from Abcam or one of our authorized distributors