

## Product datasheet

### Anti-IL-15RA antibody [JM7A4] ab91270

[3 References](#) [1 Image](#)

#### Overview

<b>Product name</b>	Anti-IL-15RA antibody [JM7A4]
<b>Description</b>	Mouse monoclonal [JM7A4] to IL-15RA
<b>Host species</b>	Mouse
<b>Tested applications</b>	<b>Suitable for:</b> WB, IP, Flow Cyt
<b>Species reactivity</b>	<b>Reacts with:</b> Human
<b>Immunogen</b>	Recombinant full length protein corresponding to Human IL-15RA.
<b>Positive control</b>	LPS and IFN gamma stimulated PBMCs
<b>General notes</b>	<p>The Life Science industry has been in the grips of a reproducibility crisis for a number of years. Abcam is leading the way in addressing this with our range of recombinant monoclonal antibodies and knockout edited cell lines for gold-standard validation. Please check that this product meets your needs before purchasing.</p> <p>If you have any questions, special requirements or concerns, please send us an inquiry and/or contact our Support team ahead of purchase. Recommended alternatives for this product can be found below, along with publications, customer reviews and Q&amp;As</p>

#### Properties

<b>Form</b>	Liquid
<b>Storage instructions</b>	Shipped at 4°C. Store at +4°C short term (1-2 weeks). Store at -20°C or -80°C. Avoid freeze / thaw cycle.
<b>Storage buffer</b>	<p>pH: 7.20</p> <p>Preservative: 0.09% Sodium azide</p> <p>Constituent: PBS</p>
<b>Purity</b>	Protein A purified
<b>Purification notes</b>	ab91270 is affinity purified
<b>Clonality</b>	Monoclonal
<b>Clone number</b>	JM7A4
<b>Isotype</b>	IgG2b

#### Applications

## Applications

### The Abpromise guarantee

Our **Abpromise guarantee** covers the use of ab91270 in the following tested applications.

The application notes include recommended starting dilutions; optimal dilutions/concentrations should be determined by the end user.

Application	Abreviews	Notes
WB		Use at an assay dependent concentration.
IP		Use at an assay dependent concentration.
Flow Cyt		Use 0.5µg for 10 <sup>6</sup> cells. <b>ab170192</b> - Mouse monoclonal IgG2b, is suitable for use as an isotype control with this antibody.

## Target

### Function

Receptor for interleukin-15. Expression of different isoforms may alter or interfere with signal transduction. Isoform 5, isoform 6, isoform 7 and isoform 8 do not bind IL15. Signal transduction involves STAT3, STAT5, STAT6, JAK2 (By similarity) and SYK.

### Tissue specificity

Isoform 1, isoform 3, isoform 4, isoform 5, isoform 6, isoform 7, isoform 8 and isoform 9 are widely expressed. Expressed in fetal brain with higher expression in the hippocampus and cerebellum than in cortex and thalamus. Higher levels of soluble sIL-15RA form in comparison with membrane-bound forms is present in all brain structures.

### Sequence similarities

Contains 1 Sushi (CCP/SCR) domain.

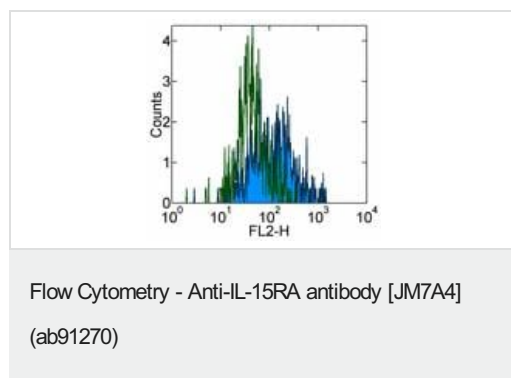
### Post-translational modifications

A soluble form (sIL-15RA) arises from proteolytic shedding of the membrane-anchored receptor. The cleavage involves ADAM17/TACE (By similarity). It also binds IL-15 and thus interferes with IL-15 binding to the membrane receptor.  
Phosphorylated by activated SYK.  
N-glycosylated and O-glycosylated.

### Cellular localization

Secreted > extracellular space; Membrane. Nucleus membrane. Mainly found associated with the nuclear membrane and Endoplasmic reticulum membrane. Golgi apparatus membrane. Cytoplasmic vesicle membrane. Membrane. Isoform 5, isoform 6, isoform 7 and isoform 8 are associated with endoplasmic reticulum, Golgi and cytoplasmic vesicles, but not with the nuclear membrane.

## Images



ab91270 staining IL-15RA in normal Human PBMCs by Flow cytometry.

Normal Human PBMCs were isolated, and cultured in standard conditions for 3 hours. Non adherent cells were removed from culture, and remaining cells were stimulated with LPS and IFN- $\gamma$  for 24 hours.

Open/green histogram; stained with 0.25 µg of Purified Mouse IgG2b Isotype Control

Closed/blue histogram; stained with 0.25 µg of ab91270.

Detection utilised Biotin Anti-Mouse IgG and SAV-PE.  
Cells in the large scatter population were used for analysis.

**Please note:** All products are "FOR RESEARCH USE ONLY. NOT FOR USE IN DIAGNOSTIC PROCEDURES"

#### **Our Abpromise to you: Quality guaranteed and expert technical support**

---

- Replacement or refund for products not performing as stated on the datasheet
- Valid for 12 months from date of delivery
- Response to your inquiry within 24 hours
- We provide support in Chinese, English, French, German, Japanese and Spanish
- Extensive multi-media technical resources to help you
- We investigate all quality concerns to ensure our products perform to the highest standards

If the product does not perform as described on this datasheet, we will offer a refund or replacement. For full details of the Abpromise, please visit <https://www.abcam.com/abpromise> or contact our technical team.

#### **Terms and conditions**

---

- Guarantee only valid for products bought direct from Abcam or one of our authorized distributors