

## Product datasheet

### Anti-IL-22RA1 antibody ab18568

2 Images

#### Overview

<b>Product name</b>	Anti-IL-22RA1 antibody
<b>Description</b>	Goat polyclonal to IL-22RA1
<b>Host species</b>	Goat
<b>Tested applications</b>	<b>Suitable for:</b> IHC-P
<b>Species reactivity</b>	<b>Reacts with:</b> Human
<b>Immunogen</b>	Synthetic peptide corresponding to Human IL-22RA1 aa 42-70 (N terminal). Sequence: DSGPEGTPDTVYSIEYKTYGERDWVAKK

 [Run BLAST with](#)

 [Run BLAST with](#)

#### General notes

The Life Science industry has been in the grips of a reproducibility crisis for a number of years. Abcam is leading the way in addressing this with our range of recombinant monoclonal antibodies and knockout edited cell lines for gold-standard validation. Please check that this product meets your needs before purchasing.

If you have any questions, special requirements or concerns, please send us an inquiry and/or contact our Support team ahead of purchase. Recommended alternatives for this product can be found below, along with publications, customer reviews and Q&As

#### Properties

<b>Form</b>	Liquid
<b>Storage instructions</b>	Shipped at 4°C. Upon delivery aliquot and store at -20°C or -80°C. Avoid repeated freeze / thaw cycles.
<b>Storage buffer</b>	pH: 7.20 Preservative: 0.1% Sodium azide Constituents: 0.21% Potassium phosphate, 0.812% Sodium chloride
<b>Purity</b>	Immunogen affinity purified
<b>Clonality</b>	Polyclonal
<b>Isotype</b>	IgG

#### Applications

## The Abpromise guarantee

Our **Abpromise guarantee** covers the use of ab18568 in the following tested applications.

The application notes include recommended starting dilutions; optimal dilutions/concentrations should be determined by the end user.

Application	Abreviews	Notes
IHC-P		

### Application notes

ELISA: 1/100000.

IHC-P: 1/100. Perform heat mediated antigen retrieval via the pressure cooker method (with citrate buffer pH 6 or pH 8) before commencing with IHC staining protocol. See recommended protocol.

IHC-Fr: Use at an assay dependent dilution. Fix with ice cold acetone. See recommended protocol.

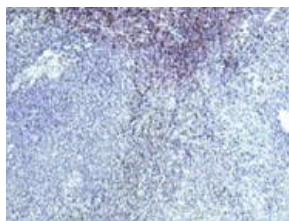
ICC (cytospun cells on slides): Use at an assay dependent dilution. Fix with ice cold acetone. See recommended protocol.

Not tested in other applications.

Optimal dilutions/concentrations should be determined by the end user.

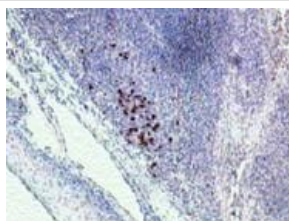
## Target

## Images



Immunohistochemistry (Formalin/PFA-fixed paraffin-embedded sections) - Anti-IL-22RA1 antibody (ab18568)

ab18568 employed for the immunohistochemical detection of human N-terminal IL-22RA1, in paraffin embedded human spleen.



Immunohistochemistry (Formalin/PFA-fixed paraffin-embedded sections) - Anti-IL-22RA1 antibody (ab18568)

ab18568 employed for the immunohistochemical detection of human N-terminal IL-22RA1, in paraffin embedded human tonsil.

**Please note:** All products are "FOR RESEARCH USE ONLY. NOT FOR USE IN DIAGNOSTIC PROCEDURES"

### **Our Abpromise to you: Quality guaranteed and expert technical support**

---

- Replacement or refund for products not performing as stated on the datasheet
- Valid for 12 months from date of delivery
- Response to your inquiry within 24 hours
  
- We provide support in Chinese, English, French, German, Japanese and Spanish
- Extensive multi-media technical resources to help you
- We investigate all quality concerns to ensure our products perform to the highest standards

If the product does not perform as described on this datasheet, we will offer a refund or replacement. For full details of the Abpromise, please visit <https://www.abcam.com/abpromise> or contact our technical team.

### **Terms and conditions**

---

- Guarantee only valid for products bought direct from Abcam or one of our authorized distributors