


Product datasheet

Anti-IL2 Receptor beta/p75 antibody ab61195

[2 Abreviews](#) [5 References](#) [2 Images](#)

Overview

Product name	Anti-IL2 Receptor beta/p75 antibody
Description	Rabbit polyclonal to IL2 Receptor beta/p75
Host species	Rabbit
Tested applications	Suitable for: IHC-P, WB
Species reactivity	Reacts with: Human, African green monkey Predicted to work with: Mouse, Rat 
Immunogen	Synthetic peptide corresponding to Human IL2 Receptor beta/p75.
Positive control	WB: COS7 cell extracts. IHC-P: Human lung carcinoma tissue.
General notes	<p>The Life Science industry has been in the grips of a reproducibility crisis for a number of years. Abcam is leading the way in addressing this with our range of recombinant monoclonal antibodies and knockout edited cell lines for gold-standard validation. Please check that this product meets your needs before purchasing.</p> <p>If you have any questions, special requirements or concerns, please send us an inquiry and/or contact our Support team ahead of purchase. Recommended alternatives for this product can be found below, along with publications, customer reviews and Q&As</p>

Properties

Form	Liquid
Storage instructions	Shipped at 4°C. Store at -20°C. Stable for 12 months at -20°C.
Storage buffer	pH: 7.40 Preservative: 0.02% Sodium azide Constituents: PBS, 50% Glycerol (glycerin, glycerine), 0.87% Sodium chloride
Purity	Without Mg ²⁺ and Ca ²⁺ Immunogen affinity purified
Purification notes	ab61195 was affinity-purified from rabbit antiserum by affinity-chromatography using epitope-specific immunogen.
Clonality	Polyclonal
Isotype	IgG

Applications

The Abpromise guarantee

Our **Abpromise guarantee** covers the use of ab61195 in the following tested applications.

The application notes include recommended starting dilutions; optimal dilutions/concentrations should be determined by the end user.

Application	Abreviews	Notes
IHC-P		1/50 - 1/100.
WB		1/500 - 1/1000. Detects a band of approximately 61 kDa (predicted molecular weight: 61 kDa).

Target

Function

Receptor for interleukin-2. This beta subunit is involved in receptor mediated endocytosis and transduces the mitogenic signals of IL2.

Sequence similarities

Belongs to the type I cytokine receptor family. Type 4 subfamily.
Contains 1 fibronectin type-III domain.

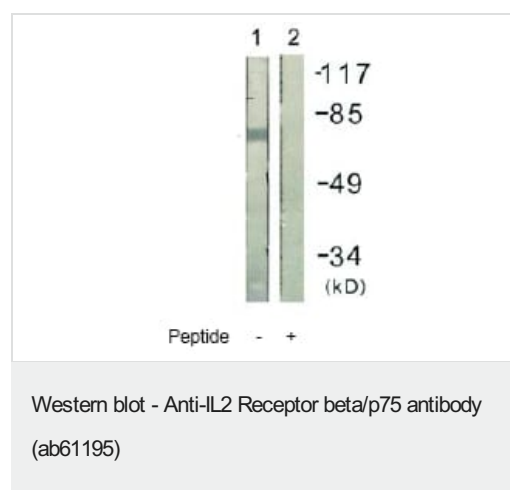
Domain

The WSXWS motif appears to be necessary for proper protein folding and thereby efficient intracellular transport and cell-surface receptor binding.
The box 1 motif is required for JAK interaction and/or activation.

Cellular localization

Membrane.

Images



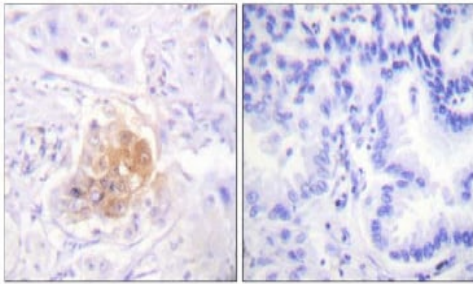
All lanes : Anti-IL2 Receptor beta/p75 antibody (ab61195) at 1/500 dilution

Lane 1 : COS7 cell extracts

Lane 2 : COS7 cell extracts with immunising peptide

Predicted band size: 61 kDa

Observed band size: 61 kDa



Peptide - +

Immunohistochemistry (Formalin/PFA-fixed paraffin-embedded sections) - Anti-IL2 Receptor beta/p75 antibody (ab61195)

ab61195 at 1/50 dilution staining IL2 Receptor beta/p75 in human lung carcinoma by Immunohistochemistry, Paraffin-embedded tissue, in the absence (left) or presence (right) of the immunising peptide.

Please note: All products are "FOR RESEARCH USE ONLY. NOT FOR USE IN DIAGNOSTIC PROCEDURES"

Our Abpromise to you: Quality guaranteed and expert technical support

- Replacement or refund for products not performing as stated on the datasheet
- Valid for 12 months from date of delivery
- Response to your inquiry within 24 hours
- We provide support in Chinese, English, French, German, Japanese and Spanish
- Extensive multi-media technical resources to help you
- We investigate all quality concerns to ensure our products perform to the highest standards

If the product does not perform as described on this datasheet, we will offer a refund or replacement. For full details of the Abpromise, please visit <https://www.abcam.com/abpromise> or contact our technical team.

Terms and conditions

- Guarantee only valid for products bought direct from Abcam or one of our authorized distributors