

Anti-IL36 alpha/IL-1F6 antibody - C-terminal ab180909

[6 References](#) [3 Images](#)

Overview

Product name	Anti-IL36 alpha/IL-1F6 antibody - C-terminal
Description	Rabbit polyclonal to IL36 alpha/IL-1F6 - C-terminal
Host species	Rabbit
Specificity	ab180909 will not cross-react with IL36 beta or IL36 gamma.
Tested applications	Suitable for: WB, IHC-P
Species reactivity	Reacts with: Human
Immunogen	Synthetic peptide corresponding to Human IL36 alpha/IL-1F6 (C terminal). (11 amino acid peptide; NP_055255). Database link: Q9UHA7
Positive control	MCF7 cell lysate; Human brain tissue; mouse brain tissue.
General notes	<p>The Life Science industry has been in the grips of a reproducibility crisis for a number of years. Abcam is leading the way in addressing this with our range of recombinant monoclonal antibodies and knockout edited cell lines for gold-standard validation. Please check that this product meets your needs before purchasing.</p> <p>If you have any questions, special requirements or concerns, please send us an inquiry and/or contact our Support team ahead of purchase. Recommended alternatives for this product can be found below, along with publications, customer reviews and Q&As</p>

Properties

Form	Liquid
Storage instructions	Shipped at 4°C. Store at +4°C short term (1-2 weeks). Upon delivery aliquot. Store at -20°C long term. Avoid freeze / thaw cycle.
Storage buffer	pH: 7.2 Preservative: 0.02% Sodium azide Constituent: 99% PBS
Purity	Immunogen affinity purified
Clonality	Polyclonal
Isotype	IgG

Applications

The Abpromise guarantee

Our **Abpromise guarantee** covers the use of ab180909 in the following tested applications.

The application notes include recommended starting dilutions; optimal dilutions/concentrations should be determined by the end user.

Application	Abreviews	Notes
WB		Use a concentration of 1 - 2 µg/ml. Detects a band of approximately 16 kDa (predicted molecular weight: 18 kDa).
IHC-P		Use a concentration of 5 - 20 µg/ml.

Target

Tissue specificity

Expressed in immune system and fetal brain, but not in other tissues tested or in multiple hematopoietic cell lines.

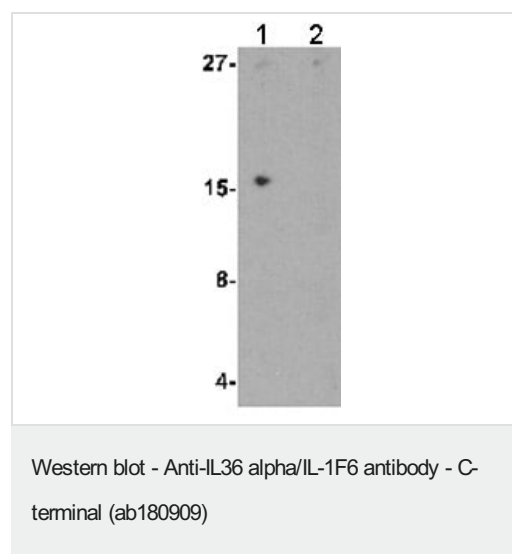
Sequence similarities

Belongs to the IL-1 family.

Cellular localization

Secreted.

Images



All lanes : Anti-IL36 alpha/IL-1F6 antibody - C-terminal (ab180909)
at 1 µg/ml

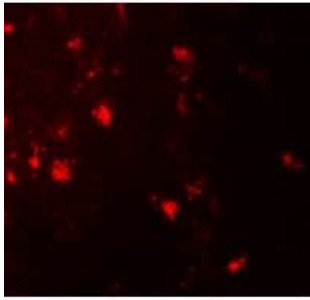
Lane 1 : MCF7 cell lysate

Lane 2 : MCF7 cell lysate with blocking peptide

Lysates/proteins at 15 µg per lane.

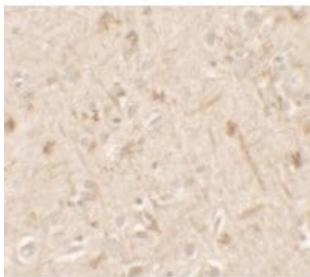
Predicted band size: 18 kDa

Observed band size: 16 kDa



Immunohistochemical analysis of paraffin-embedded Human brain tissue labeling IL36 alpha / IL-1F6 with ab180909 at 20 µg/ml.

Immunohistochemistry (Formalin/PFA-fixed paraffin-embedded sections) - Anti-IL36 alpha/IL-1F6 antibody - C-terminal (ab180909)



Immunohistochemical analysis of paraffin-embedded Human brain tissue labeling IL36 alpha / IL-1F6 with ab180909 at 5 µg/ml.

Immunohistochemistry (Formalin/PFA-fixed paraffin-embedded sections) - Anti-IL36 alpha/IL-1F6 antibody - C-terminal (ab180909)

Please note: All products are "FOR RESEARCH USE ONLY. NOT FOR USE IN DIAGNOSTIC PROCEDURES"

Our Abpromise to you: Quality guaranteed and expert technical support

- Replacement or refund for products not performing as stated on the datasheet
- Valid for 12 months from date of delivery
- Response to your inquiry within 24 hours
- We provide support in Chinese, English, French, German, Japanese and Spanish
- Extensive multi-media technical resources to help you
- We investigate all quality concerns to ensure our products perform to the highest standards

If the product does not perform as described on this datasheet, we will offer a refund or replacement. For full details of the Abpromise, please visit <https://www.abcam.com/abpromise> or contact our technical team.

Terms and conditions

- Guarantee only valid for products bought direct from Abcam or one of our authorized distributors