


Product datasheet

Anti-IMPDH1 antibody ab33039

★★★★★ [3 Abreviews](#) [5 References](#) [2 Images](#)

Overview

Product name	Anti-IMPDH1 antibody
Description	Rabbit polyclonal to IMPDH1
Host species	Rabbit
Tested applications	Suitable for: WB
Species reactivity	Reacts with: Mouse, Rat, Human Predicted to work with: Xenopus laevis, Zebrafish 
Immunogen	Synthetic peptide corresponding to Human IMPDH1 aa 500 to the C-terminus (C terminal) conjugated to keyhole limpet haemocyanin. (Peptide available as ab33038)
General notes	<p>The immunogen used for this product shares 86% homology with IMPDH2. Cross-reactivity with this protein has not been confirmed experimentally.</p> <p>The Life Science industry has been in the grips of a reproducibility crisis for a number of years. Abcam is leading the way in addressing this with our range of recombinant monoclonal antibodies and knockout edited cell lines for gold-standard validation. Please check that this product meets your needs before purchasing.</p> <p>If you have any questions, special requirements or concerns, please send us an inquiry and/or contact our Support team ahead of purchase. Recommended alternatives for this product can be found below, along with publications, customer reviews and Q&As</p>

Properties

Form	Liquid
Storage instructions	Shipped at 4°C. Store at +4°C short term (1-2 weeks). Upon delivery aliquot. Store at -20°C or -80°C. Avoid freeze / thaw cycle.
Storage buffer	pH: 7.40 Preservative: 0.02% Sodium azide Constituent: PBS
	Batches of this product that have a concentration < 1mg/ml may have BSA added as a stabilising agent. If you would like information about the formulation of a specific lot, please contact our scientific support team who will be happy to help.

Purity	Immunogen affinity purified
Clonality	Polyclonal
Isotype	IgG

Applications

The Abpromise guarantee Our **Abpromise guarantee** covers the use of ab33039 in the following tested applications. The application notes include recommended starting dilutions; optimal dilutions/concentrations should be determined by the end user.

Application	Abreviews	Notes
WB	★★★★★ (1)	

Application notes

ICC/IF: 1/100 (please refer to abreview for further details).
 WB: Use at a concentration of 1 µg/ml. Detects a band of approximately 55 kDa (predicted molecular weight: 55 kDa).

Not yet tested in other applications.
 Optimal dilutions/concentrations should be determined by the end user.

Target

Function Rate limiting enzyme in the de novo synthesis of guanine nucleotides and therefore is involved in the regulation of cell growth. It may also have a role in the development of malignancy and the growth progression of some tumors.

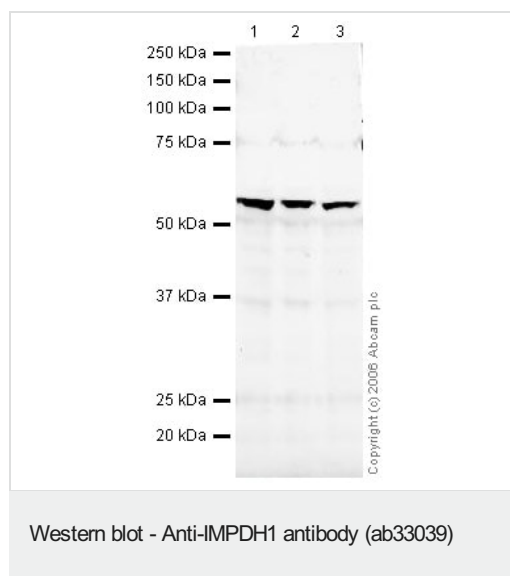
Tissue specificity IMP type I is the main species in normal leukocytes and type II predominates over type I in the tumor.

Pathway Purine metabolism; XMP biosynthesis via de novo pathway; XMP from IMP: step 1/1.

Involvement in disease Defects in IMPDH1 are the cause of retinitis pigmentosa type 10 (RP10) [MIM:180105]. RP leads to degeneration of retinal photoreceptor cells. Patients typically have night vision blindness and loss of midperipheral visual field. As their condition progresses, they lose their far peripheral visual field and eventually central vision as well. RP10 inheritance is autosomal dominant.

Sequence similarities Belongs to the IMPDH/GMPR family.
 Contains 2 CBS domains.

Images



All lanes : Anti-IMPDPH1 antibody (ab33039) at 1 µg/ml

Lane 1 : HeLa (Human epithelial carcinoma cell line) Whole Cell Lysate

Lane 2 : Jurkat whole cell lysate ([ab7899](#))

Lane 3 : A-431 whole cell lysate ([ab7909](#))

Lysates/proteins at 20 µg per lane.

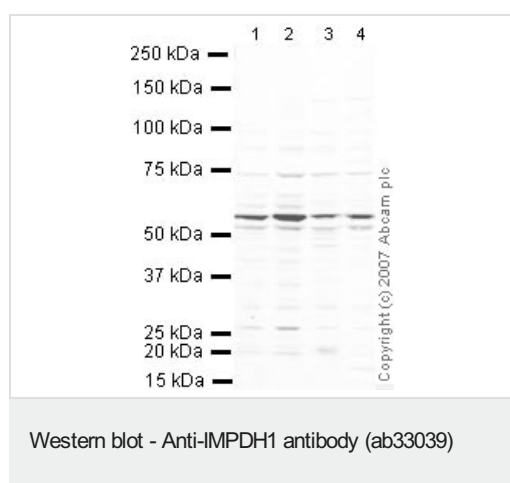
Secondary

All lanes : IRDye 680 Conjugated Goat anti-rabbit IgG (H&L) at 1/15000 dilution

Performed under reducing conditions.

Predicted band size: 55 kDa

Observed band size: 55 kDa



All lanes : Anti-IMPDPH1 antibody (ab33039) at 1 µg/ml

Lane 1 : NIH/3T3 whole cell lysate ([ab7179](#))

Lane 2 : MEF1 (Mouse embryonic fibroblast cell line) Whole Cell Lysate

Lane 3 : Ovary (Mouse) Tissue Lysate - normal tissue

Lane 4 : PC12 (Rat adrenal pheochromocytoma cell line) Whole Cell Lysate

Lysates/proteins at 10 µg per lane.

Secondary

All lanes : IRDye 680 Conjugated Goat Anti-Rabbit IgG (H+L) at 1/10000 dilution

Performed under reducing conditions.

Predicted band size: 55 kDa

Observed band size: 55 kDa

Please note: All products are "FOR RESEARCH USE ONLY. NOT FOR USE IN DIAGNOSTIC PROCEDURES"

Our Abpromise to you: Quality guaranteed and expert technical support

- Replacement or refund for products not performing as stated on the datasheet
- Valid for 12 months from date of delivery
- Response to your inquiry within 24 hours
- We provide support in Chinese, English, French, German, Japanese and Spanish
- Extensive multi-media technical resources to help you
- We investigate all quality concerns to ensure our products perform to the highest standards

If the product does not perform as described on this datasheet, we will offer a refund or replacement. For full details of the Abpromise, please visit <https://www.abcam.com/abpromise> or contact our technical team.

Terms and conditions

- Guarantee only valid for products bought direct from Abcam or one of our authorized distributors