


## Product datasheet

# Anti-IMPDH2 + IMPDH1 antibody [EPR9678(B)] ab137120

Recombinant RabMAb

[1 References](#) [3 Images](#)

### Overview

<b>Product name</b>	Anti-IMPDH2 + IMPDH1 antibody [EPR9678(B)]
<b>Description</b>	Rabbit monoclonal [EPR9678(B)] to IMPDH2 + IMPDH1
<b>Host species</b>	Rabbit
<b>Specificity</b>	The immunogen used for this product shares 92% homology with IPMDH2. Cross-reactivity with this protein has not been confirmed experimentally.
<b>Tested applications</b>	<b>Suitable for:</b> WB <b>Unsuitable for:</b> Flow Cyt, ICC/IF, IHC-P or IP
<b>Species reactivity</b>	<b>Reacts with:</b> Human <b>Predicted to work with:</b> Mouse, Rat 
<b>Immunogen</b>	Synthetic peptide. This information is proprietary to Abcam and/or its suppliers.
<b>Positive control</b>	WB: IMPDH1 and IMPDH2 recombinant protein, HeLa, Jurkat, K562, and Raji cell lysates.
<b>General notes</b>	This product is a recombinant monoclonal antibody, which offers several advantages including: <ul style="list-style-type: none"> <li>- High batch-to-batch consistency and reproducibility</li> <li>- Improved sensitivity and specificity</li> <li>- Long-term security of supply</li> <li>- Animal-free production</li> </ul> For more information <a href="#">see here</a> . Our RabMAb <sup>®</sup> technology is a patented hybridoma-based technology for making rabbit monoclonal antibodies. For details on our patents, please refer to <a href="#">RabMAb<sup>®</sup> patents</a> .

### Properties

<b>Form</b>	Liquid
<b>Storage instructions</b>	Shipped at 4°C. Upon delivery aliquot and store at -20°C. Avoid freeze / thaw cycles.
<b>Storage buffer</b>	pH: 7.2 Preservative: 0.01% Sodium azide Constituents: 9% PBS, 40% Glycerol (glycerin, glycerine), 0.05% BSA, 50% Tissue culture supernatant
<b>Purity</b>	Tissue culture supernatant

Clonality	Monoclonal
Clone number	EPR9678(B)
Isotype	IgG

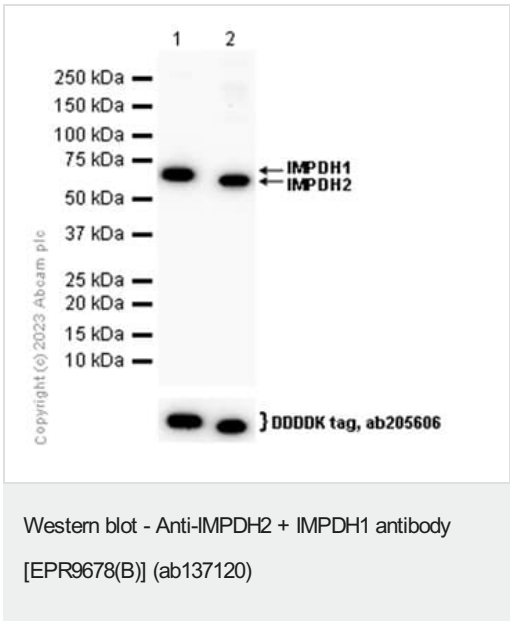
### Applications

**The Abpromise guarantee** Our **Abpromise guarantee** covers the use of ab137120 in the following tested applications. The application notes include recommended starting dilutions; optimal dilutions/concentrations should be determined by the end user.

Application	Abreviews	Notes
WB		1/1000 - 1/10000. Detects a band of approximately 55 kDa (predicted molecular weight: 55 kDa).

**Application notes** Is unsuitable for Flow Cyt,ICC/IF,IHC-P or IP.

### Images



**All lanes** : Anti-IMPDH2 + IMPDH1 antibody [EPR9678(B)] (ab137120) at 1/1000 dilution

**Lane 1** : DDK tagged human full length IMPDH1 recombinant protein (P20839-3), 10ng

**Lane 2** : DDK tagged human full length IMPDH2 recombinant protein (P12268), 10ng

**Secondary**

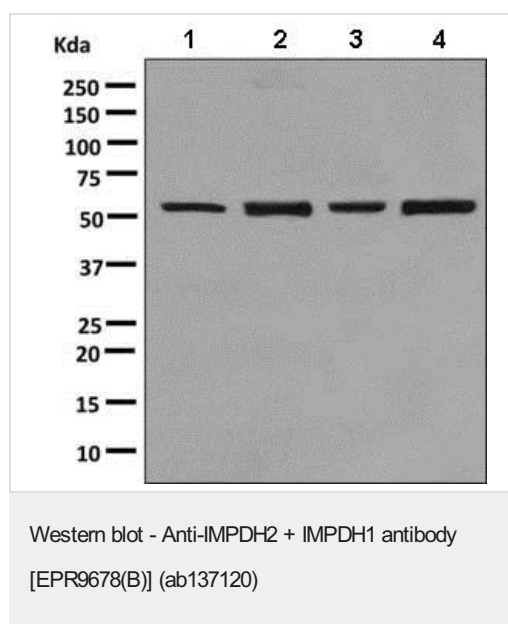
**All lanes** : Goat Anti-Rabbit IgG H&L (HRP) (**ab97051**) at 1/20000 dilution

Performed under reducing conditions.

**Predicted band size:** 55 kDa  
**Observed band size:** 55,60 kDa

**Exposure time:** 3 seconds

Blocking and diluting buffer and concentration: 5% NFDM/TBST.



**All lanes :** Anti-IMPDPH2 + IMPDPH1 antibody [EPR9678(B)] (ab137120) at 1/1000 dilution

**Lane 1 :** HeLa cell lysate

**Lane 2 :** Jurkat cell lysate

**Lane 3 :** K562 cell lysate

**Lane 4 :** Raji cell lysate

Lysates/proteins at 10 µg per lane.

### Secondary

**All lanes :** HRP labelled goat anti-rabbit at 1/2000 dilution

**Predicted band size:** 55 kDa

**Observed band size:** 55 kDa

Why choose a recombinant antibody?

**Research with confidence**  
Consistent and reproducible results

**Long-term and scalable supply**  
Recombinant technology

**Success from the first experiment**  
Confirmed specificity

**Ethical standards compliant**  
Animal-free production

Anti-IMPDPH1 antibody [EPR9678(B)] (ab137120)

**Please note:** All products are "FOR RESEARCH USE ONLY. NOT FOR USE IN DIAGNOSTIC PROCEDURES"

### Our Abpromise to you: Quality guaranteed and expert technical support

- Replacement or refund for products not performing as stated on the datasheet
- Valid for 12 months from date of delivery
- Response to your inquiry within 24 hours
- We provide support in Chinese, English, French, German, Japanese and Spanish
- Extensive multi-media technical resources to help you

- We investigate all quality concerns to ensure our products perform to the highest standards

If the product does not perform as described on this datasheet, we will offer a refund or replacement. For full details of the Abpromise, please visit <https://www.abcam.com/abpromise> or contact our technical team.

#### **Terms and conditions**

---

- Guarantee only valid for products bought direct from Abcam or one of our authorized distributors