

Product datasheet

Anti-IMPDH2 + IMPDH1 antibody [EPR9679(B)] ab137112

Recombinant RabMAb

4 Images

Overview

Product name	Anti-IMPDH2 + IMPDH1 antibody [EPR9679(B)]
Description	Rabbit monoclonal [EPR9679(B)] to IMPDH2 + IMPDH1
Host species	Rabbit
Tested applications	Suitable for: Flow Cyt (Intra), WB Unsuitable for: ICC/IF, IHC-P or IP
Species reactivity	Reacts with: Human
Immunogen	Synthetic peptide. This information is proprietary to Abcam and/or its suppliers.
Positive control	WB: HeLa, Jurkat and K562 cell, C-Myc/DDK tagged full length IMPDH1 and IMPDH2 Human Recombinant Protein lysates FC (intra): K562 cells
General notes	<p>This product is a recombinant monoclonal antibody, which offers several advantages including:</p> <ul style="list-style-type: none"> - High batch-to-batch consistency and reproducibility - Improved sensitivity and specificity - Long-term security of supply - Animal-free production <p>For more information see here.</p> <p>Our RabMAb[®] technology is a patented hybridoma-based technology for making rabbit monoclonal antibodies. For details on our patents, please refer to RabMAb[®] patents.</p> <p>Mouse, Rat: We have preliminary internal testing data to indicate this antibody may not react with these species. Please contact us for more information.</p>

Properties

Form	Liquid
Storage instructions	Shipped at 4°C. Store at -20°C.
Storage buffer	pH: 7.2 Preservative: 0.01% Sodium azide Constituents: 9% PBS, 40% Glycerol (glycerin, glycerine), 0.05% BSA, 50% Tissue culture supernatant
Purity	Tissue culture supernatant

Clonality	Monoclonal
Clone number	EPR9679(B)
Isotype	IgG

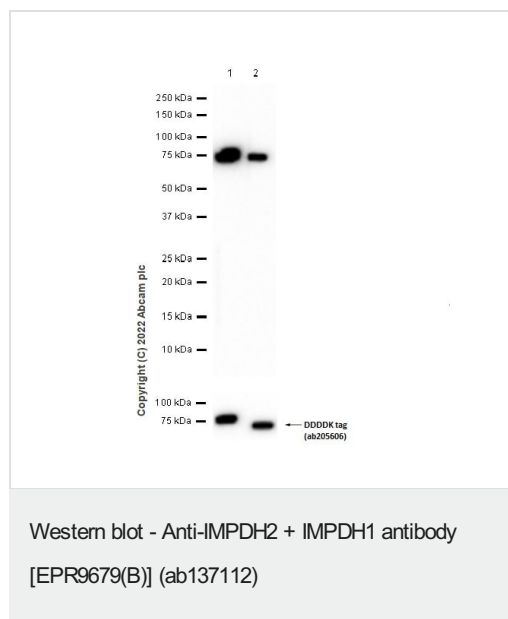
Applications

The Abpromise guarantee Our **Abpromise guarantee** covers the use of ab137112 in the following tested applications. The application notes include recommended starting dilutions; optimal dilutions/concentrations should be determined by the end user.

Application	Abreviews	Notes
Flow Cyt (Intra)		1/100 - 1/500. ab172730 - Rabbit monoclonal IgG, is suitable for use as an isotype control with this antibody.
WB		1/1000 - 1/10000. Predicted molecular weight: 55 kDa.

Application notes Is unsuitable for ICC/IF, IHC-P or IP.

Images



All lanes : Anti-IMPDH2 + IMPDH1 antibody [EPR9679(B)] (ab137112) at 1/1000 dilution

Lane 1 : C-Myc/DDK tagged full length IMPDH1 Human Recombinant Protein

Lane 2 : C-Myc/DDK tagged full length IMPDH2 Human Recombinant Protein

Secondary

All lanes : Goat Anti-Rabbit IgG H&L (HRP) (**ab97051**) at 1/20000 dilution

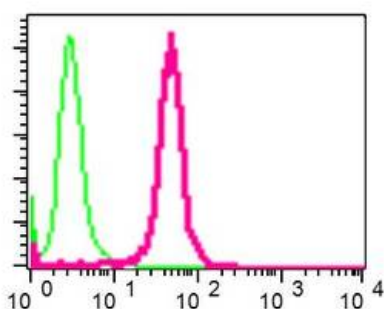
Predicted band size: 55 kDa

Observed band size: 75 kDa

Exposure time: 20 seconds

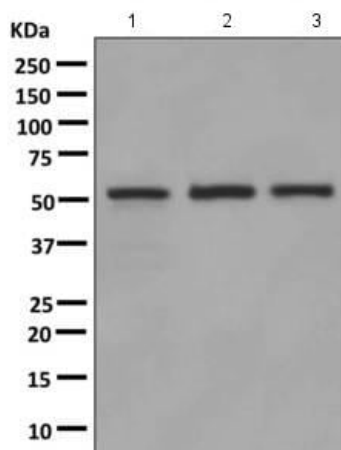
Blocking buffer and concentration: 5% NFDM/TBST.

Diluting buffer and concentration: 5% NFDM /TBST.



Flow Cytometry (Intracellular) - Anti-IMP2H2 +
IMP2H1 antibody [EPR9679(B)] (ab137112)

Intracellular flow cytometric analysis of permeabilized K562 cells labelling IMP2H1 with ab137112 (red) at 1/500 dilution or a rabbit IgG (negative) (green).



Western blot - Anti-IMP2H2 + IMP2H1 antibody
[EPR9679(B)] (ab137112)

All lanes : Anti-IMP2H2 + IMP2H1 antibody [EPR9679(B)]
(ab137112) at 1/1000 dilution

Lane 1 : HeLa cell lysate

Lane 2 : Jurkat cell lysate

Lane 3 : K562 cell lysate

Lysates/proteins at 10 µg per lane.

Secondary

All lanes : Standard HRP-labeled goat anti-rabbit at 1/2000
dilution

Developed using the ECL technique.

Predicted band size: 55 kDa

Why choose a recombinant antibody?



Research with confidence
Consistent and reproducible results



Long-term and scalable supply
Recombinant technology



Success from the first experiment
Confirmed specificity



Ethical standards compliant
Animal-free production

Anti-IMPDPH2 + IMPDPH1 antibody [EPR9679(B)]
(ab137112)

Please note: All products are "FOR RESEARCH USE ONLY. NOT FOR USE IN DIAGNOSTIC PROCEDURES"

Our Abpromise to you: Quality guaranteed and expert technical support

- Replacement or refund for products not performing as stated on the datasheet
- Valid for 12 months from date of delivery
- Response to your inquiry within 24 hours
- We provide support in Chinese, English, French, German, Japanese and Spanish
- Extensive multi-media technical resources to help you
- We investigate all quality concerns to ensure our products perform to the highest standards

If the product does not perform as described on this datasheet, we will offer a refund or replacement. For full details of the Abpromise, please visit <https://www.abcam.com/abpromise> or contact our technical team.

Terms and conditions

- Guarantee only valid for products bought direct from Abcam or one of our authorized distributors