


Product datasheet

Anti-IMPDH2 antibody [EPR8364(B)] α b131158

Recombinant RabMAb

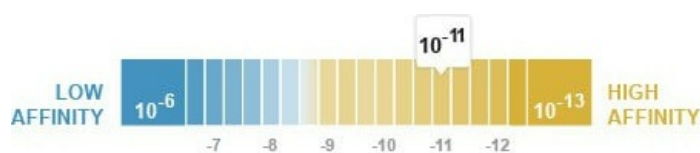
★★★★★ 1 Abreviews 13 References 6 Images

Overview

Product name	Anti-IMPDH2 antibody [EPR8364(B)]
Description	Rabbit monoclonal [EPR8364(B)] to IMPDH2
Host species	Rabbit
Specificity	The immunogen used to raise this antibody shares 79% homology with Human IMPDH1. This antibody shows very faint band when testing IMPDH1 recombinant protein in WB test.
Tested applications	Suitable for: WB, IHC-P, ICC/IF
Species reactivity	Reacts with: Human Predicted to work with: Mouse, Rat 
Immunogen	Synthetic peptide within Human IMPDH2 aa 100-200. The exact sequence is proprietary.
Positive control	K562, HepG2, HeLa and NCI-H460 cell lysates; Human colon tissue
General notes	This product is a recombinant monoclonal antibody, which offers several advantages including: <ul style="list-style-type: none"> - High batch-to-batch consistency and reproducibility - Improved sensitivity and specificity - Long-term security of supply - Animal-free production For more information see here . Our RabMAb [®] technology is a patented hybridoma-based technology for making rabbit monoclonal antibodies. For details on our patents, please refer to RabMAb[®] patents .

Properties

Form	Liquid
Storage instructions	Shipped at 4°C. Store at -20°C. Stable for 12 months at -20°C.
Dissociation constant (K_D)	$K_D = 2.20 \times 10^{-11}$ M



[Learn more about K_D](#)

Storage buffer	pH: 7.20 Preservative: 0.01% Sodium azide Constituents: 9% PBS, 40% Glycerol (glycerin, glycerine), 0.05% BSA, 50% Tissue culture supernatant
Purity	Protein A purified
Clonality	Monoclonal
Clone number	EPR8364(B)
Isotype	IgG

Applications

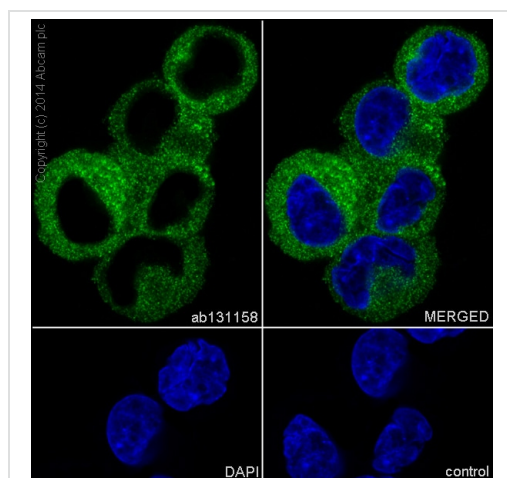
The Abpromise guarantee Our **Abpromise guarantee** covers the use of ab131158 in the following tested applications. The application notes include recommended starting dilutions; optimal dilutions/concentrations should be determined by the end user.

Application	Abreviews	Notes
WB		1/1000 - 1/10000. Predicted molecular weight: 56 kDa.
IHC-P	★★★★★ (1)	1/100 - 1/250. Perform heat mediated antigen retrieval with citrate buffer pH 6 before commencing with IHC staining protocol.
ICC/IF		1/100 - 1/250.

Target

Function	Rate limiting enzyme in the de novo synthesis of guanine nucleotides and therefore is involved in the regulation of cell growth. It may also have a role in the development of malignancy and the growth progression of some tumors.
Tissue specificity	IMP type I is the main species in normal leukocytes and type II predominates over type I in the tumor.
Pathway	Purine metabolism; XMP biosynthesis via de novo pathway; XMP from IMP: step 1/1.
Sequence similarities	Belongs to the IMPDH/GMPR family. Contains 2 CBS domains.
Post-translational modifications	The N-terminus is blocked.

Images

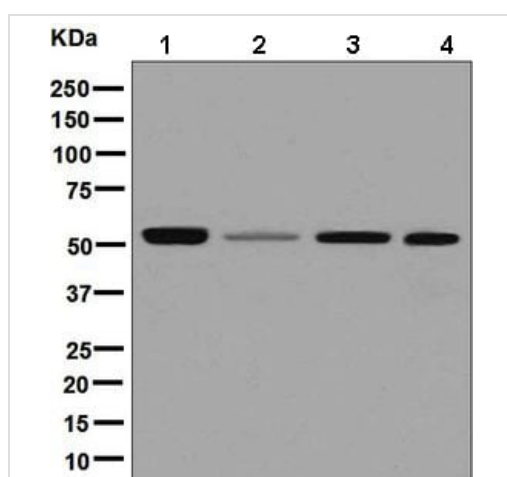


Immunocytochemistry/ Immunofluorescence - Anti-IMP2H2 antibody [EPR8364(B)] (ab131158)

ab131158 staining IMP2H2 in K562 (human chronic myelogenous leukemia) cells by ICC/IF

(Immunocytochemistry/immunofluorescence). Cells were fixed with 4% PFA and permeabilized with 0.1% triton X-100. Samples were incubated with primary antibody at a dilution of 1/500. A goat anti rabbit IgG (Alexa Fluor® 488) ([ab150077](#)) was used as the secondary antibody at a dilution of 1/1000.

DAPI was used as a nuclear counterstain and the negative control was PBS only.



Western blot - Anti-IMP2H2 antibody [EPR8364(B)] (ab131158)

All lanes : Anti-IMP2H2 antibody [EPR8364(B)] (ab131158) at 1/1000 dilution

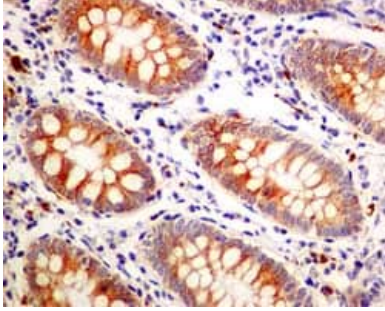
Lane 1 : K562 cell lysate

Lane 2 : HepG2 cell lysate

Lane 3 : HeLa cell lysate

Lane 4 : NCI-H460 cell lysate

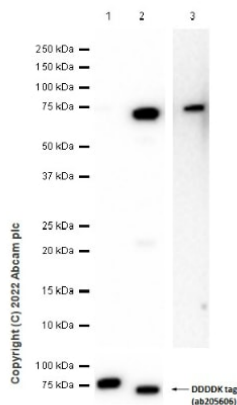
Predicted band size: 56 kDa



Immunohistochemistry (Formalin/PFA-fixed paraffin-embedded sections) - Anti-IMPDH2 antibody [EPR8364(B)] (ab131158)

Immunohistochemical analysis of paraffin-embedded Human colon tissue labelling IMPDH2 with ab131158 at 1/100 dilution.

Perform heat mediated antigen retrieval with citrate buffer pH 6 before commencing with IHC staining protocol.



Western blot - Anti-IMPDH2 antibody [EPR8364(B)] (ab131158)

All lanes : Anti-IMPDH2 antibody [EPR8364(B)] (ab131158) at 1/1000 dilution

Lanes 1 & 3 : C-Myc/DDK tagged full length IMPDH1 Human Recombinant Protein

Lane 2 : C-Myc/DDK tagged full length IMPDH2 Human Recombinant Protein

Secondary

All lanes : Goat Anti-Rabbit IgG H&L (HRP) ([ab97051](#)) at 1/20000 dilution

Predicted band size: 56 kDa

Observed band size: 75 kDa

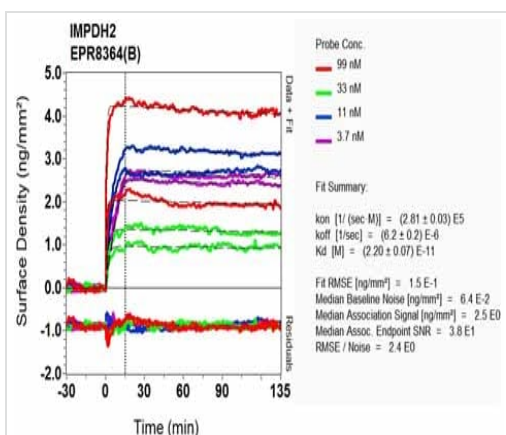
Blocking and dilution buffer: 5% NFDM/TBST.

Exposure times:

Lane 1&2: 5 seconds

Lane 3: 180 seconds.

This antibody shows very faint band when testing IMPDH1 recombinant protein in WB test



OI-RD Scanning - Anti-IMPDPH2 antibody
[EPR8364(B)] (ab131158)

Equilibrium disassociation constant (K_D)

Learn more about K_D

[Click here to learn more about \$K_D\$](#)

Why choose a
recombinant antibody?



**Research with
confidence**
Consistent and
reproducible results



**Long-term and
scalable supply**
Recombinant
technology



**Success from the
first experiment**
Confirmed
specificity



**Ethical standards
compliant**
Animal-free
production

Anti-IMPDPH2 antibody [EPR8364(B)] (ab131158)

Please note: All products are "FOR RESEARCH USE ONLY. NOT FOR USE IN DIAGNOSTIC PROCEDURES"

Our Abpromise to you: Quality guaranteed and expert technical support

- Replacement or refund for products not performing as stated on the datasheet
- Valid for 12 months from date of delivery
- Response to your inquiry within 24 hours
- We provide support in Chinese, English, French, German, Japanese and Spanish
- Extensive multi-media technical resources to help you
- We investigate all quality concerns to ensure our products perform to the highest standards

If the product does not perform as described on this datasheet, we will offer a refund or replacement. For full details of the Abpromise, please visit <https://www.abcam.com/abpromise> or contact our technical team.

Terms and conditions

- Guarantee only valid for products bought direct from Abcam or one of our authorized distributors