


Anti-IMP1 antibody ab113493

[1 References](#) [2 Images](#)

Overview

Product name	Anti-IMP1 antibody
Description	Rabbit polyclonal to IMP1
Host species	Rabbit
Tested applications	Suitable for: WB, IHC-P
Species reactivity	Reacts with: Human Predicted to work with: Mouse, Rat 
Immunogen	Recombinant fragment, corresponding to amino acids 217-437 of Human IMP1 (BC117450).
Positive control	Human fetal liver, fetal muscle, Fetal kidney, HepG2, 97 H, and LO2 cell lysates; Human fetal liver tissue.
General notes	<p>The Life Science industry has been in the grips of a reproducibility crisis for a number of years. Abcam is leading the way in addressing this with our range of recombinant monoclonal antibodies and knockout edited cell lines for gold-standard validation. Please check that this product meets your needs before purchasing.</p> <p>If you have any questions, special requirements or concerns, please send us an inquiry and/or contact our Support team ahead of purchase. Recommended alternatives for this product can be found below, along with publications, customer reviews and Q&As</p>

Properties

Form	Lyophilized:Reconstitute with 200ul distilled sterile water. Please note that if you receive this product in liquid form it has already been reconstituted as described and no further reconstitution is necessary.
Storage instructions	Shipped at 4°C. Upon delivery aliquot and store at -20°C. Avoid repeated freeze / thaw cycles.
Storage buffer	pH: 7.20 Preservative: 0.02% Sodium azide Constituent: 1% BSA
Purity	Immunogen affinity purified
Purification notes	ab113493 is purified by a peptide affinity column.
Clonality	Polyclonal
Isotype	IgG

Applications

The Abpromise guarantee

Our **Abpromise guarantee** covers the use of ab113493 in the following tested applications.

The application notes include recommended starting dilutions; optimal dilutions/concentrations should be determined by the end user.

Application	Abreviews	Notes
WB		1/500 - 1/1000. Predicted molecular weight: 89 kDa.
IHC-P		1/100 - 1/500.

Target

Function

May interact with hyaluronan which may serve to form a basic macromolecular scaffold comprising the insoluble interphotoreceptor matrix.

Tissue specificity

Abundantly expressed in retina where it is specifically expressed by cone and rod photoreceptor cells. Localizes to cone and rod photoreceptor cells surrounding the interphotoreceptor matrix of the retina.

Sequence similarities

Contains 2 SEA domains.

Post-translational modifications

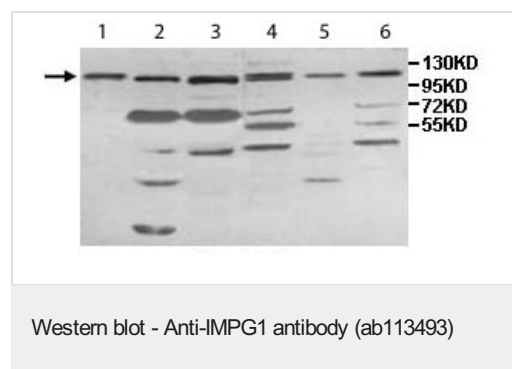
The N-terminus is blocked.

Highly glycosylated (N- and O-linked carbohydrates and sialic acid).

Cellular localization

Secreted.

Images



All lanes : Anti-IMPG1 antibody (ab113493) at 1/500 dilution

Lane 1 : Human fetal liver lysate

Lane 2 : Human fetal muscle lysate

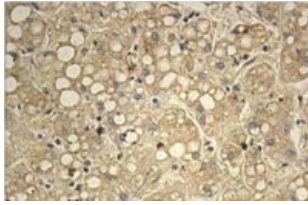
Lane 3 : Human fetal kidney lysate

Lane 4 : HepG2 cell lysate

Lane 5 : 97 H cell lysate

Lane 6 : LO2 cell lysate

Predicted band size: 89 kDa



ab113493 at 1/100 dilution staining IMPG1 in Formalin-fixed, Paraffin-embedded Human fetal liver tissue by Immunohistochemistry.

Immunohistochemistry (Formalin/PFA-fixed paraffin-embedded sections) - Anti-IMPG1 antibody (ab113493)

Please note: All products are "FOR RESEARCH USE ONLY. NOT FOR USE IN DIAGNOSTIC PROCEDURES"

Our Abpromise to you: Quality guaranteed and expert technical support

- Replacement or refund for products not performing as stated on the datasheet
- Valid for 12 months from date of delivery
- Response to your inquiry within 24 hours
- We provide support in Chinese, English, French, German, Japanese and Spanish
- Extensive multi-media technical resources to help you
- We investigate all quality concerns to ensure our products perform to the highest standards

If the product does not perform as described on this datasheet, we will offer a refund or replacement. For full details of the Abpromise, please visit <https://www.abcam.com/abpromise> or contact our technical team.

Terms and conditions

- Guarantee only valid for products bought direct from Abcam or one of our authorized distributors