





Anti-Inhibin beta A antibody ab97705

8 References [2 Images](#)

Overview

Product name	Anti-Inhibin beta A antibody
Description	Rabbit polyclonal to Inhibin beta A
Host species	Rabbit
Tested applications	Suitable for: WB, ICC/IF
Species reactivity	Reacts with: Human
Immunogen	Synthetic peptide, corresponding to a sequence within amino acids 362-423 (SGSSLSFHST VINHYRMRGH SPFANLKSCC VPTKLRPMSM LYYDDGQNII KKDIQNMIVE EC) of Human Inhibin beta A (NP_002183).  Run BLAST with   Run BLAST with 
Positive control	H1299, HeLa S3 and HepG2 whole cell lysate (ab7900); HeLa cells; 293T, A431, MOLT4 and Raji cell lines.
General notes	<p>The Life Science industry has been in the grips of a reproducibility crisis for a number of years. Abcam is leading the way in addressing this with our range of recombinant monoclonal antibodies and knockout edited cell lines for gold-standard validation. Please check that this product meets your needs before purchasing.</p> <p>If you have any questions, special requirements or concerns, please send us an inquiry and/or contact our Support team ahead of purchase. Recommended alternatives for this product can be found below, along with publications, customer reviews and Q&As</p>

Properties

Form	Liquid
Storage instructions	Shipped at 4°C. Upon delivery aliquot. Store at -20°C or -80°C. Avoid freeze / thaw cycle.
Storage buffer	pH: 7.00 Preservative: 0.025% Proclin 300 Constituents: 79% PBS, 20% Glycerol (glycerin, glycerine)
Purity	Immunogen affinity purified
Clonality	Polyclonal
Isotype	IgG

Applications

The Abpromise guarantee

Our **Abpromise guarantee** covers the use of ab97705 in the following tested applications.

The application notes include recommended starting dilutions; optimal dilutions/concentrations should be determined by the end user.

Application	Abreviews	Notes
WB		1/500 - 1/3000. Predicted molecular weight: 47 kDa.
ICC/IF		1/100 - 1/200.

Target

Function

Inhibins and activins inhibit and activate, respectively, the secretion of follitropin by the pituitary gland. Inhibins/activins are involved in regulating a number of diverse functions such as hypothalamic and pituitary hormone secretion, gonadal hormone secretion, germ cell development and maturation, erythroid differentiation, insulin secretion, nerve cell survival, embryonic axial development or bone growth, depending on their subunit composition. Inhibins appear to oppose the functions of activins.

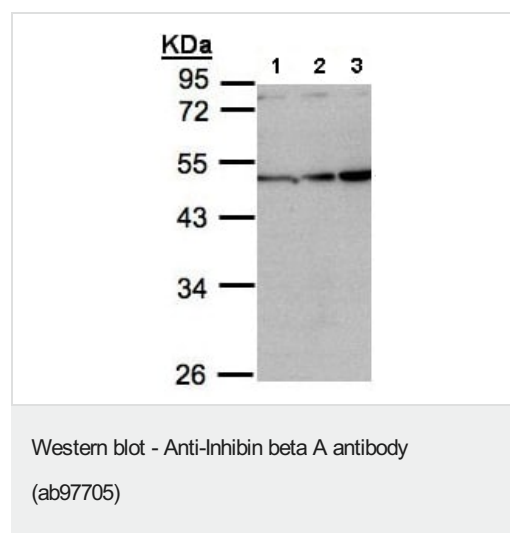
Sequence similarities

Belongs to the TGF-beta family.

Cellular localization

Secreted.

Images



All lanes : Anti-Inhibin beta A antibody (ab97705) at 1/1000 dilution

Lane 1 : H1299 whole cell lysate

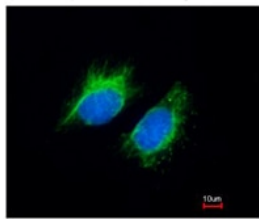
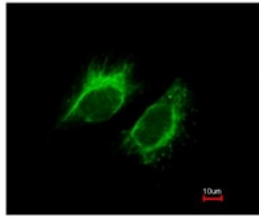
Lane 2 : HeLa S3 whole cell lysate

Lane 3 : HepG2 whole cell lysate

Lysates/proteins at 30 µg per lane.

Predicted band size: 47 kDa

10% SDS-PAGE.



ab97705, at 1/200 dilution, staining Inhibin beta A in paraformaldehyde-fixed HeLa cells by Immunofluorescence. Lower image is merged with DNA probe.

Immunocytochemistry/ Immunofluorescence - Anti-Inhibin beta A antibody (ab97705)

Please note: All products are "FOR RESEARCH USE ONLY. NOT FOR USE IN DIAGNOSTIC PROCEDURES"

Our Abpromise to you: Quality guaranteed and expert technical support

- Replacement or refund for products not performing as stated on the datasheet
- Valid for 12 months from date of delivery
- Response to your inquiry within 24 hours
- We provide support in Chinese, English, French, German, Japanese and Spanish
- Extensive multi-media technical resources to help you
- We investigate all quality concerns to ensure our products perform to the highest standards

If the product does not perform as described on this datasheet, we will offer a refund or replacement. For full details of the Abpromise, please visit <https://www.abcam.com/abpromise> or contact our technical team.

Terms and conditions

- Guarantee only valid for products bought direct from Abcam or one of our authorized distributors