


## Product datasheet

# Anti-Insulin degrading enzyme / IDE antibody ab32216

KO VALIDATED

★★★★★ 9 Abreviews 70 References 3 Images

### Overview

Product name	Anti-Insulin degrading enzyme / IDE antibody
Description	Rabbit polyclonal to Insulin degrading enzyme / IDE
Host species	Rabbit
Specificity	Replenishment batches of our polyclonal antibody, ab32216 are tested in WB. Previous batches were additionally validated in IHC-FoFr. This application is still expected to work and is covered by our Abpromise guarantee. You may also be interested in our alternative recombinant antibody, <a href="#">ab133561</a> .
Tested applications	<b>Suitable for:</b> WB, IHC-FoFr
Species reactivity	<b>Reacts with:</b> Mouse, Rat, Human <b>Predicted to work with:</b> Cow, Cat, Dog 
Immunogen	Synthetic peptide corresponding to Human Insulin degrading enzyme/ IDE aa 950 to the C-terminus. (Peptide available as <a href="#">ab32215</a> )
General notes	<p>The Life Science industry has been in the grips of a reproducibility crisis for a number of years. Abcam is leading the way in addressing this with our range of recombinant monoclonal antibodies and knockout edited cell lines for gold-standard validation. Please check that this product meets your needs before purchasing.</p> <p>If you have any questions, special requirements or concerns, please send us an inquiry and/or contact our Support team ahead of purchase. Recommended alternatives for this product can be found below, along with publications, customer reviews and Q&amp;As</p>

### Properties

Form	Liquid
Storage instructions	Shipped at 4°C. Store at +4°C short term (1-2 weeks). Upon delivery aliquot. Store at -20°C or -80°C. Avoid freeze / thaw cycle.
Storage buffer	pH: 7.40 Preservative: 0.02% Sodium azide Constituent: PBS

Batches of this product that have a concentration < 1mg/ml may have BSA added as a stabilising agent. If you would like information about the formulation of a specific lot, please contact our scientific support team who will be happy to help.

<b>Purity</b>	Immunogen affinity purified
<b>Clonality</b>	Polyclonal
<b>Isotype</b>	IgG

## Applications

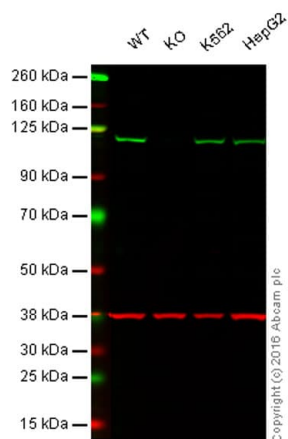
**The Abpromise guarantee** Our **Abpromise guarantee** covers the use of ab32216 in the following tested applications. The application notes include recommended starting dilutions; optimal dilutions/concentrations should be determined by the end user.

Application	Abreviews	Notes
WB	★★★★☆ (2)	Use a concentration of 1 µg/ml. Detects a band of approximately 118 kDa (predicted molecular weight: 118 kDa). Can be blocked with <b>Human Insulin degrading enzyme / IDE peptide (ab32215)</b> .
IHC-FoFr	★★★★★ (2)	1/100.

## Target

<b>Function</b>	Plays a role in the cellular breakdown of insulin, IAPP, glucagon, bradykinin, kallidin and other peptides, and thereby plays a role in intercellular peptide signaling. Degrades amyloid formed by APP and IAPP. May play a role in the degradation and clearance of naturally secreted amyloid beta-protein by neurons and microglia.
<b>Sequence similarities</b>	Belongs to the peptidase M16 family.
<b>Post-translational modifications</b>	The N-terminus is blocked.
<b>Cellular localization</b>	Cytoplasm. Cell surface. Present at the cell surface of neuron cells. The membrane-associated isoform is approximately 5 kDa larger than the known cytosolic isoform.

## Images



Western blot - Anti-Insulin degrading enzyme / IDE antibody (ab32216)

**Lane 1:** Wild-type HAP1 cell lysate (20 µg)

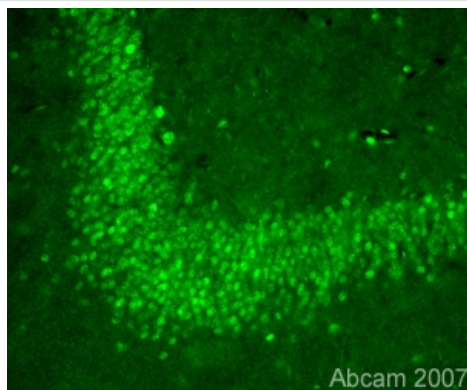
**Lane 2:** Insulin degrading enzyme / IDE knockout HAP1 cell lysate (20 µg)

**Lane 3:** K562 cell lysate (20 µg)

**Lane 4:** HepG2 cell lysate (20 µg)

**Lanes 1 - 4:** Merged signal (red and green). Green - ab32216 observed at 120 kDa. Red - loading control, [ab8245](#), observed at 37 kDa.

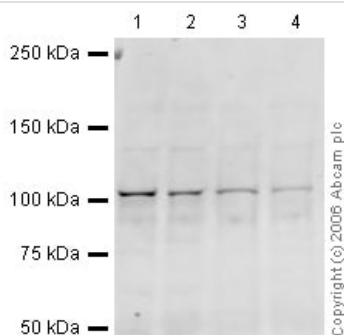
ab32216 was shown to specifically react with Insulin degrading enzyme / IDE in wild-type HAP1 cells. No band was observed when Insulin degrading enzyme / IDE knockout samples were examined. Wild-type and Insulin degrading enzyme / IDE knockout samples were subjected to SDS-PAGE. ab32216 and [ab8245](#) (loading control to GAPDH) were diluted at 1 µg/ml and 1/10,000 respectively and incubated overnight at 4°C. Blots were developed with Goat anti-Rabbit IgG H&L (IRDye® 800CW) preadsorbed ([ab216773](#)) and Goat anti-Mouse IgG H&L (IRDye® 680RD) preadsorbed ([ab216776](#)) secondary antibodies at 1/10,000 dilution for 1 hour at room temperature before imaging.



Immunohistochemistry (PFA perfusion fixed frozen sections) - Anti-Insulin degrading enzyme / IDE antibody (ab32216)

This image is courtesy of Sophie Pezet, CNRS, Paris, France

Immunofluorescent staining for Insulin degrading enzyme/IDE in rat brain rat hippocampus using Rabbit polyclonal to Insulin degrading enzyme/IDE (ab32216). . The staining is located in the neuronal soma and is finely punctuated. The picture was acquired using the X20 objective. Protocol details: Rats were intracardially perfused with 4% paraformaldehyde. Whole brain tissue was post-fixed overnight in the same fixative, and cryoprotected in 20% sucrose and frozen in OCT. 30µm coronal sections were cut by cryostat for use in free floating IHC. Primary antibody ab32216 was incubated overnight at 1/100 at room temperature. Secondary antibody Alexa fluor 488 1/1000 was incubated for 2 hours at room temperature.



Western blot - Anti-Insulin degrading enzyme / IDE antibody (ab32216)

**All lanes :** Anti-Insulin degrading enzyme / IDE antibody (ab32216) at 1 µg/ml

**Lane 1 :** Mouse Brain at 20 µg/ml

**Lane 2 :** Brain (Rat) Whole Cell Lysate - normal tissue at 20 µg

**Lane 3 :** Mouse Hippocampus Lysate at 20 µg

**Lane 4 :** Rat Hippocampus Lysate at 20 µg

### Secondary

**All lanes :** Goat polyclonal to Rabbit IgG (Alexa Fluor® 680) at 1/10000 dilution

Performed under reducing conditions.

**Predicted band size:** 118 kDa

**Observed band size:** 118 kDa

**Please note:** All products are "FOR RESEARCH USE ONLY. NOT FOR USE IN DIAGNOSTIC PROCEDURES"

### Our Abpromise to you: Quality guaranteed and expert technical support

- Replacement or refund for products not performing as stated on the datasheet
- Valid for 12 months from date of delivery
- Response to your inquiry within 24 hours
- We provide support in Chinese, English, French, German, Japanese and Spanish
- Extensive multi-media technical resources to help you
- We investigate all quality concerns to ensure our products perform to the highest standards

If the product does not perform as described on this datasheet, we will offer a refund or replacement. For full details of the Abpromise, please visit <https://www.abcam.com/abpromise> or contact our technical team.

#### **Terms and conditions**

---

- Guarantee only valid for products bought direct from Abcam or one of our authorized distributors