

Product datasheet

Anti-Integrin linked ILK antibody [EP1593Y] ab52480


KO VALIDATED

Recombinant

RabMAb

[18 References](#) [10 Images](#)

Overview

Product name	Anti-Integrin linked ILK antibody [EP1593Y]
Description	Rabbit monoclonal [EP1593Y] to Integrin linked ILK
Host species	Rabbit
Specificity	This antibody reacts with Integrin linked ILK. The mouse and rat recommendation is based on the WB results. We do not guarantee IHC-P for mouse and rat.
Tested applications	Suitable for: WB, IP, IHC-P Unsuitable for: Flow Cyt or ICC/IF
Species reactivity	Reacts with: Rat, Human, African green monkey Predicted to work with: Mouse, Cow 
Immunogen	Synthetic peptide within Human Integrin linked ILK aa 400 to the C-terminus. The exact sequence is proprietary. Database link: Q13418
Positive control	Human heart muscle tissue and COS cell lysate
General notes	This product is a recombinant monoclonal antibody, which offers several advantages including: <ul style="list-style-type: none"> - High batch-to-batch consistency and reproducibility - Improved sensitivity and specificity - Long-term security of supply - Animal-free production For more information see here . Our RabMAb [®] technology is a patented hybridoma-based technology for making rabbit monoclonal antibodies. For details on our patents, please refer to RabMAb[®] patents .

Properties

Form	Liquid
Storage instructions	Shipped at 4°C. Store at +4°C short term (1-2 weeks). Upon delivery aliquot. Store at -20°C long term. Avoid freeze / thaw cycle.
Storage buffer	pH: 7.20 Preservative: 0.01% Sodium azide Constituents: 59% PBS, 40% Glycerol, 0.05% BSA

Purity	Protein A purified
Clonality	Monoclonal
Clone number	EP1593Y
Isotype	IgG

Applications

The Abpromise guarantee Our **Abpromise guarantee** covers the use of ab52480 in the following tested applications.

The application notes include recommended starting dilutions; optimal dilutions/concentrations should be determined by the end user.

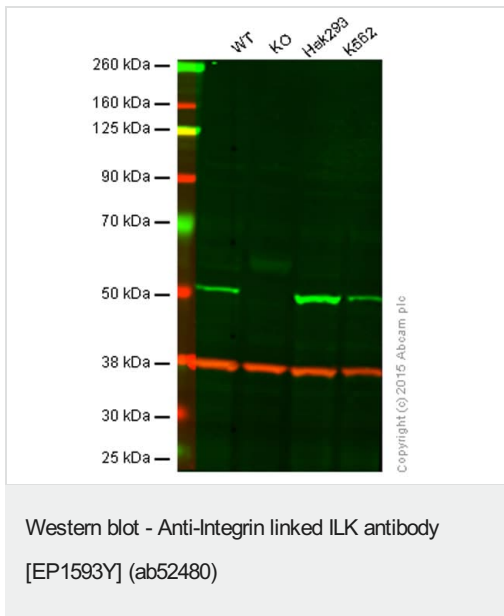
Application	Abreviews	Notes
WB		1/1000. Detects a band of approximately 51 kDa (predicted molecular weight: 51 kDa). For unpurified use at 1/2000 - 1/10000 dilution.
IP		1/40. For unpurified use at 1/30 dilution.
IHC-P		1/100. Perform heat mediated antigen retrieval with citrate buffer pH 6 before commencing with IHC staining protocol. See <u>IHC antigen retrieval protocols</u> . The mouse and rat recommendation is based on the WB results. We do not guarantee IHC-P for mouse and rat.

Application notes Is unsuitable for Flow Cyt or ICC/IF.

Target

Function	Receptor-proximal protein kinase regulating integrin-mediated signal transduction. May act as a mediator of inside-out integrin signaling. Focal adhesion protein part of the complex ILK-PINCH. This complex is considered to be one of the convergence points of integrin- and growth factor-signaling pathway. Could be implicated in mediating cell architecture, adhesion to integrin substrates and anchorage-dependent growth in epithelial cells. Phosphorylates beta-1 and beta-3 integrin subunit on serine and threonine residues, but also AKT1 and GSK3B.
Tissue specificity	Highly expressed in heart followed by skeletal muscle, pancreas and kidney. Weakly expressed in placenta, lung and liver.
Sequence similarities	Belongs to the protein kinase superfamily. TKL Ser/Thr protein kinase family. Contains 5 ANK repeats. Contains 1 protein kinase domain.
Domain	A PH-like domain is involved in phosphatidylinositol phosphate binding.
Post-translational modifications	Autophosphorylated on serine residues.
Cellular localization	Cell junction > focal adhesion. Cell membrane.

Images



Lane 1: Wild-type HAP1 cell lysate (20 µg)

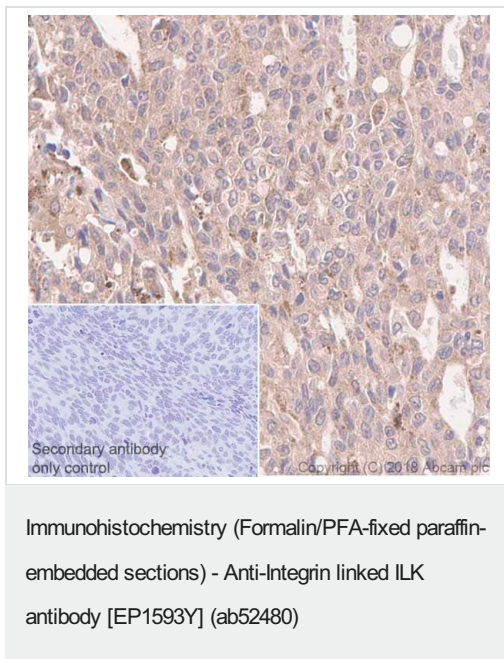
Lane 2: Integrin linked ILK knockout HAP1 cell lysate (20 µg)

Lane 3: HEK293 cell lysate (20 µg)

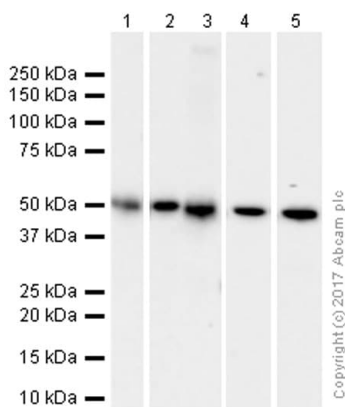
Lane 4: K562 cell lysate (20 µg)

Lanes 1 - 4: Merged signal (red and green). Green - ab52480 observed at 52 kDa. Red - loading control, **ab8245**, observed at 37 kDa.

Unpurified ab52480 was shown to specifically react with Integrin linked ILK when Integrin linked ILK knockout samples were used. Wild-type and Integrin linked ILK knockout samples were subjected to SDS-PAGE. Unpurified ab52480 and **ab8245** (loading control to GAPDH) were both diluted 1/2000 and incubated overnight at 4°C. Blots were developed with Goat anti-Rabbit IgG H&L (IRDye® 800CW) preadsorbed (**ab216773**) and Goat anti-Mouse IgG H&L (IRDye® 680RD) preadsorbed (**ab216776**) secondary antibodies at 1/10000 dilution for 1 hour at room temperature before imaging.



Immunohistochemistry (Formalin/PFA-fixed paraffin-embedded sections) analysis of Human lung cancer tissue sections labeling Integrin linked ILK with Purified ab52480 at 1/100 dilution (7.13 µg/ml). Heat mediated antigen retrieval was performed using citrate (pH 6.0).



Western blot - Anti-Integrin linked ILK antibody [EP1593Y] (ab52480)

All lanes : Anti-Integrin linked ILK antibody [EP1593Y] (ab52480) at 1/1000 dilution (Purified)

Lane 1 : HeLa (Human cervix adenocarcinoma epithelial cell) whole cell lysates with 5% NFDM/TBST

Lane 2 : K-562 (Human chronic myelogenous leukemia lymphoblast) whole cell lysates with 5% NFDM/TBST

Lane 3 : Mouse heart lysates with 5% NFDM/TBST

Lane 4 : HEK-293 (Human embryonic kidney epithelial cell) whole cell lysates with 5% NFDM/TBST

Lane 5 : PC-12 (Rat adrenal gland pheochromocytoma) whole cell lysates with 5% NFDM/TBST

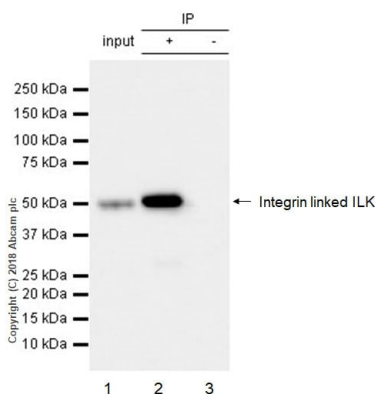
Lysates/proteins at 20 µg per lane.

Secondary

All lanes : Goat Anti-Rabbit IgG H&L (HRP) ([ab97051](#)) at 1/20000 dilution (Goat Anti-Rabbit IgG, (H+L), Peroxidase conjugated)

Predicted band size: 51 kDa

Observed band size: 51 kDa



Immunoprecipitation - Anti-Integrin linked ILK antibody [EP1593Y] (ab52480)

ab52480 (purified) at 1:40 dilution (2µg) immunoprecipitating Integrin linked ILK in HeLa whole cell lysate.

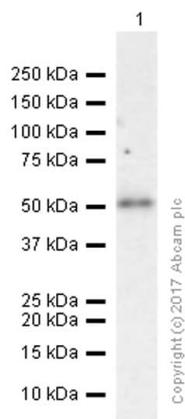
Lane 1 (input): HeLa (Human cervix adenocarcinoma epithelial cell) whole cell lysate 10µg

Lane 2 (+): ab52480 & HeLa whole cell lysate

Lane 3 (-): Rabbit monoclonal IgG ([ab172730](#)) instead of ab52480 in HeLa whole cell lysate

For western blotting, VeriBlot for IP Detection Reagent (HRP) ([ab131366](#)) was used for detection at 1:1000 dilution.

Blocking and diluting buffer: 5% NFDM/TBST.



Western blot - Anti-Integrin linked ILK antibody
[EP1593Y] (ab52480)

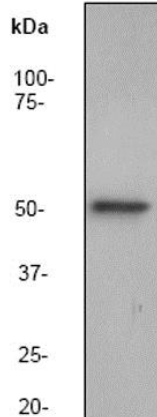
Anti-Integrin linked ILK antibody [EP1593Y] (ab52480) at 1/1000 dilution (Purified) + COS-1 (African green monkey kidney fibroblast-like) whole cell lysates at 15 µg with 5% NFDM/TBST

Secondary

Goat Anti-Rabbit IgG H&L (HRP) ([ab97051](#)) at 1/20000 dilution
(Goat Anti-Rabbit IgG, (H+L), Peroxidase conjugated)

Predicted band size: 51 kDa

Observed band size: 51 kDa



Western blot - Anti-Integrin linked ILK antibody
[EP1593Y] (ab52480)

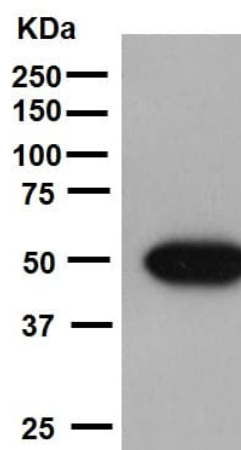
Anti-Integrin linked ILK antibody [EP1593Y] (ab52480) at 1/2000 dilution (unpurified) + COS-1 (African green monkey kidney fibroblast-like) cell lysate at 10 µg

Secondary

Goat anti-rabbit HRP labeled at 1/2000 dilution

Predicted band size: 51 kDa

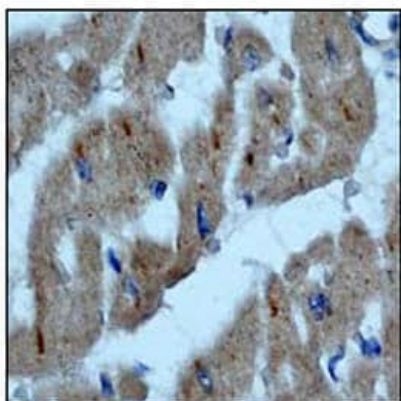
Observed band size: 51 kDa



Western blot - Anti-Integrin linked ILK antibody
[EP1593Y] (ab52480)

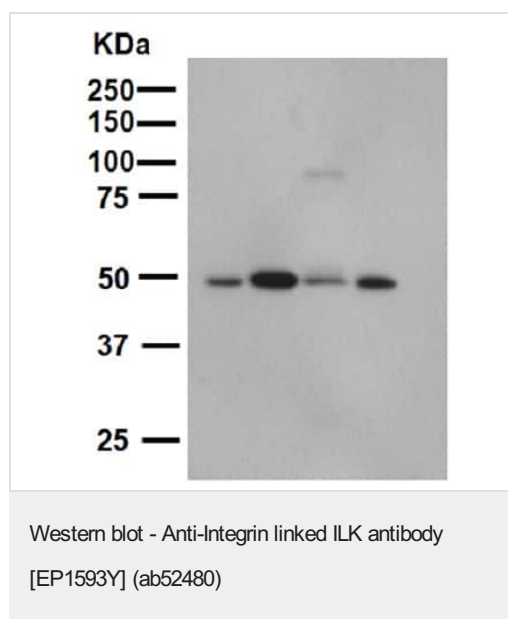
Anti-Integrin linked ILK antibody [EP1593Y] (ab52480) (unpurified)
+ PC12

Predicted band size: 51 kDa



Immunohistochemistry (Formalin/PFA-fixed paraffin-
embedded sections) - Anti-Integrin linked ILK
antibody [EP1593Y] (ab52480)

Immunohistochemical analysis of paraffin-embedded human heart
muscle using unpurified ab52480 at a 1/50 dilution.







All lanes : Anti-Integrin linked ILK antibody [EP1593Y] (ab52480)
at 1/2000 dilution (unpurified)

Lane 1 : Rat Brain
Lane 2 : Rat Heart
Lane 3 : Rat Kidney
Lane 4 : Rat Spleen

Predicted band size: 51 kDa

Exposure time: 3 minutes

Why choose a recombinant antibody?

 <p>Research with confidence Consistent and reproducible results</p>	 <p>Long-term and scalable supply Recombinant technology</p>
 <p>Success from the first experiment Confirmed specificity</p>	 <p>Ethical standards compliant Animal-free production</p>

Anti-Integrin linked ILK antibody [EP1593Y] (ab52480)

Please note: All products are "FOR RESEARCH USE ONLY. NOT FOR USE IN DIAGNOSTIC PROCEDURES"

Our Promise to you: Quality guaranteed and expert technical support

- Replacement or refund for products not performing as stated on the datasheet
- Valid for 12 months from date of delivery
- Response to your inquiry within 24 hours

- We provide support in Chinese, English, French, German, Japanese and Spanish
- Extensive multi-media technical resources to help you
- We investigate all quality concerns to ensure our products perform to the highest standards

If the product does not perform as described on this datasheet, we will offer a refund or replacement. For full details of the Abpromise, please visit <https://www.abcam.com/abpromise> or contact our technical team.

Terms and conditions

- Guarantee only valid for products bought direct from Abcam or one of our authorized distributors