

Product datasheet

Anti-Interferon alpha 2b antibody [4E10] ab9388

1 Image

Overview

Product name	Anti-Interferon alpha 2b antibody [4E10]
Description	Mouse monoclonal [4E10] to Interferon alpha 2b
Host species	Mouse
Tested applications	Suitable for: WB
Species reactivity	Reacts with: Human
Immunogen	Recombinant full length protein corresponding to Human Interferon alpha 2b. Database link: P01563
General notes	<p>The neutralising bioassay was performed using L41 cell line and mouse encephalomyocarditis virus (EMCV). Briefly, interferon was pre-incubated with the test antibodies for 2 h at RT and then added to the cell monolayer. 24 h later the cells were infected with EMCV and cultured for further 24 h. Antiviral activity of interferon was evaluated using crystal-violet staining. Polyclonal antibodies to respective interferons and irrelevant monoclonal antibody of the same isotype were used as controls.</p> <p>This product was changed from ascites to tissue culture supernatant on 28/11/2017. Lot numbers higher than GR317571-2, GR317571-3 and GR190761-4 will be from tissue culture supernatant. Please note that the dilutions may need to be adjusted accordingly.</p> <p>The Life Science industry has been in the grips of a reproducibility crisis for a number of years. Abcam is leading the way in addressing this with our range of recombinant monoclonal antibodies and knockout edited cell lines for gold-standard validation. Please check that this product meets your needs before purchasing.</p> <p>If you have any questions, special requirements or concerns, please send us an inquiry and/or contact our Support team ahead of purchase. Recommended alternatives for this product can be found below, along with publications, customer reviews and Q&As</p>

Properties

Form	Liquid
Storage instructions	Shipped at 4°C. Store at +4°C short term (1-2 weeks). Upon delivery aliquot. Store at -20°C or -80°C. Avoid freeze / thaw cycle.
Storage buffer	pH: 7.2 Preservative: 0.1% Sodium azide Constituent: PBS

Purity	Protein A purified
Clonality	Monoclonal
Clone number	4E10
Myeloma	NS0/1
Isotype	IgG1
Light chain type	unknown

Applications

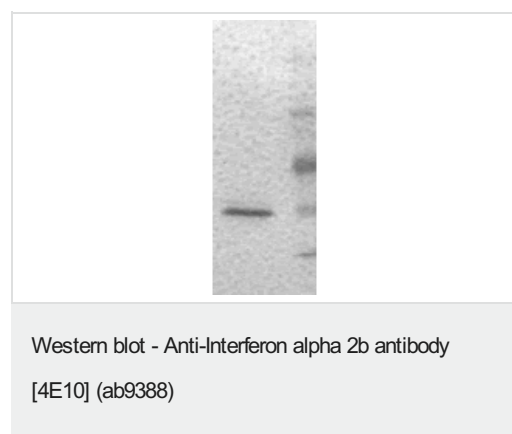
The Abpromise guarantee Our **Abpromise guarantee** covers the use of ab9388 in the following tested applications. The application notes include recommended starting dilutions; optimal dilutions/concentrations should be determined by the end user.

Application	Abreviews	Notes
WB		1/500.

Target

Function	Produced by macrophages, IFN-alpha have antiviral activities.
Sequence similarities	Belongs to the alpha/beta interferon family.
Cellular localization	Secreted.

Images



Immunoblot of human interferon alpha 2b using monoclonal antibody 4E10 at a dilution of 1:500 (4 µg/ml).

Lane 1 - interferon alpha 2b

Lane 2 - prestained standard proteins.

Immunoblot of human interferon alpha 2b using monoclonal antibody 4E10 at a dilution of 1:500 (4 µg/ml).

Lane 1 - interferon alpha 2b

Lane 2 - prestained standard proteins.

Please note: All products are "FOR RESEARCH USE ONLY. NOT FOR USE IN DIAGNOSTIC PROCEDURES"

Our Abpromise to you: Quality guaranteed and expert technical support

- Replacement or refund for products not performing as stated on the datasheet
- Valid for 12 months from date of delivery
- Response to your inquiry within 24 hours

- We provide support in Chinese, English, French, German, Japanese and Spanish
- Extensive multi-media technical resources to help you
- We investigate all quality concerns to ensure our products perform to the highest standards

If the product does not perform as described on this datasheet, we will offer a refund or replacement. For full details of the Abpromise, please visit <https://www.abcam.com/abpromise> or contact our technical team.

Terms and conditions

- Guarantee only valid for products bought direct from Abcam or one of our authorized distributors