

Product datasheet

Anti-IP10 antibody ab9807

★★★★★ [9 Abreviews](#) [33 References](#) [2 Images](#)

Overview

Product name	Anti-IP10 antibody
Description	Rabbit polyclonal to IP10
Host species	Rabbit
Tested applications	Suitable for: WB, Sandwich ELISA
Species reactivity	Reacts with: Rat, Human
Immunogen	Recombinant full length protein corresponding to Human IP10. Highly pure (>98%) recombinant hIP-10 (human Interferon Inducible Protein 10) Database link: P02778
Positive control	WB: Recombinant human IP10 protein (ab9810); Recombinant rat IP10 protein (ab75477)
General notes	Although some customers have been successful in IHC we no longer batch test in this application. The Life Science industry has been in the grips of a reproducibility crisis for a number of years. Abcam is leading the way in addressing this with our range of recombinant monoclonal antibodies and knockout edited cell lines for gold-standard validation. Please check that this product meets your needs before purchasing. If you have any questions, special requirements or concerns, please send us an inquiry and/or contact our Support team ahead of purchase. Recommended alternatives for this product can be found below, along with publications, customer reviews and Q&As

Properties

Form	Lyophilized:Reconstitute with 200µl of sterile water.
Storage instructions	Shipped at 4°C. Store at +4°C short term (1-2 weeks). Upon delivery aliquot. Store at -20°C long term.
Storage buffer	No preservative, sterile filtered
Purity	Immunogen affinity purified
Clonality	Polyclonal
Isotype	IgG
Light chain type	unknown

Applications

Applications

The Abpromise guarantee

Our **Abpromise guarantee** covers the use of ab9807 in the following tested applications.

The application notes include recommended starting dilutions; optimal dilutions/concentrations should be determined by the end user.

Application	Abreviews	Notes
WB		Use at an assay dependent concentration. To detect hIP-10 by Western Blot analysis this antibody can be used at a concentration of 0.1 - 0.2 µg/ml. Used in conjunction with compatible secondary reagents the detection limit for recombinant hIP-10 is 1.5 - 3.0 ng/lane, under either reducing or non-reducing conditions.
Sandwich ELISA		Use at an assay dependent concentration. To detect hIP-10 by direct ELISA (using 100 µl/well antibody solution) a concentration of 0.5 - 2.0 µg/ml of this antibody is required. This antigen affinity purified antibody, in conjunction with biotinylated anti-IP10 antibody (ab271283), allows the detection of 0.2 - 0.4 ng/well of recombinant hIP-10.

Target

Function

Chemotactic for monocytes and T-lymphocytes. Binds to CXCR3.

Sequence similarities

Belongs to the intercrine alpha (chemokine CxC) family.

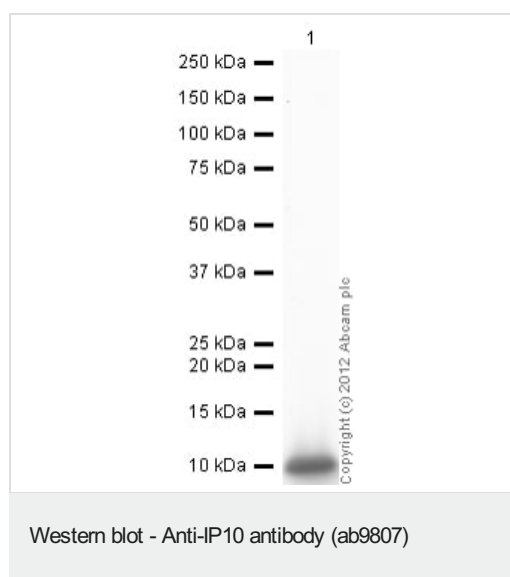
Post-translational modifications

CXCL10(1-73) is produced by proteolytic cleavage after secretion from keratinocytes.

Cellular localization

Secreted.

Images



Anti-IP10 antibody (ab9807) at 1 µg/ml + Recombinant rat IP10 protein (**ab75477**) at 0.1 µg

Secondary

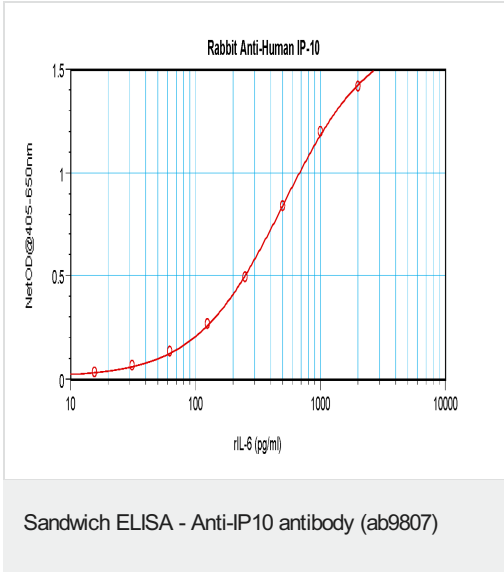
Goat Anti-Rabbit IgG H&L (HRP) preadsorbed (**ab97080**) at 1/5000 dilution

Developed using the ECL technique.

Performed under reducing conditions.

Exposure time: 30 seconds

ab9807 detecting IP-10 by sandwich ELISA.



Please note: All products are "FOR RESEARCH USE ONLY. NOT FOR USE IN DIAGNOSTIC PROCEDURES"

Our Abpromise to you: Quality guaranteed and expert technical support

- Replacement or refund for products not performing as stated on the datasheet
- Valid for 12 months from date of delivery
- Response to your inquiry within 24 hours
- We provide support in Chinese, English, French, German, Japanese and Spanish
- Extensive multi-media technical resources to help you
- We investigate all quality concerns to ensure our products perform to the highest standards

If the product does not perform as described on this datasheet, we will offer a refund or replacement. For full details of the Abpromise, please visit <https://www.abcam.com/abpromise> or contact our technical team.

Terms and conditions

- Guarantee only valid for products bought direct from Abcam or one of our authorized distributors