


Anti-IRF2BP2 antibody ab114997

[1 Image](#)

Overview

Product name	Anti-IRF2BP2 antibody
Description	Rabbit polyclonal to IRF2BP2
Host species	Rabbit
Tested applications	Suitable for: IP
Species reactivity	Reacts with: Human Predicted to work with: Chimpanzee, Rhesus monkey 
Immunogen	Synthetic peptide, corresponding to a region within amino acids 225-275 of Human IRF2BP2 (NP_892017.2).
Positive control	Whole cell lysate from Hela cells
General notes	<p>The Life Science industry has been in the grips of a reproducibility crisis for a number of years. Abcam is leading the way in addressing this with our range of recombinant monoclonal antibodies and knockout edited cell lines for gold-standard validation. Please check that this product meets your needs before purchasing.</p> <p>If you have any questions, special requirements or concerns, please send us an inquiry and/or contact our Support team ahead of purchase. Recommended alternatives for this product can be found below, along with publications, customer reviews and Q&As</p>

Properties

Form	Liquid
Storage instructions	Shipped at 4°C. Upon delivery aliquot and store at -20°C. Avoid freeze / thaw cycles.
Storage buffer	<p>pH: 7</p> <p>Preservative: 0.09% Sodium azide</p> <p>Constituent: 99% Tris citrate/phosphate</p> <p>pH 7 to 8</p>
Purity	Immunogen affinity purified
Purification notes	ab114997 was affinity purified using an epitope specific to IRF2BP2 immobilized on solid support.
Clonality	Polyclonal

Isotype

IgG

Applications

The Abpromise guarantee

Our **Abpromise guarantee** covers the use of ab114997 in the following tested applications.

The application notes include recommended starting dilutions; optimal dilutions/concentrations should be determined by the end user.

Application	Abreviews	Notes
IP		Use at 2-10 µg/mg of lysate.

Target

Function

Acts as a transcriptional repressor. Acts as a transcriptional corepressor in a IRF2-dependent manner. This repression is not mediated at least in part by histone deacetylase activities.

Sequence similarities

Belongs to the IRF2BP family.

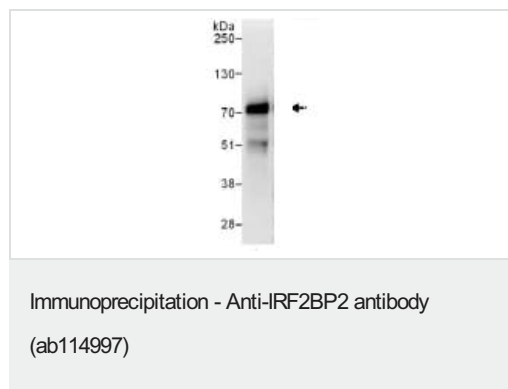
Domain

The C-terminal RING-type zinc finger domain is necessary for interaction with BAP1.

Cellular localization

Nucleus.

Images



Immunoprecipitation: 1 mg of HeLa cell lysate immunoprecipitated using ab114997 at 6 µg/mg lysate; 20% of immunoprecipitate was loaded/lane.

Western Blot of immunoprecipitate: Anti-IRF2BP2 antibody at 1 µg/ml.

Developed using the ECL technique

Exposure time: 1 second

Predicted band size: 61 kDa

Please note: All products are "FOR RESEARCH USE ONLY. NOT FOR USE IN DIAGNOSTIC PROCEDURES"

Our Abpromise to you: Quality guaranteed and expert technical support

- Replacement or refund for products not performing as stated on the datasheet
- Valid for 12 months from date of delivery
- Response to your inquiry within 24 hours
- We provide support in Chinese, English, French, German, Japanese and Spanish
- Extensive multi-media technical resources to help you
- We investigate all quality concerns to ensure our products perform to the highest standards

If the product does not perform as described on this datasheet, we will offer a refund or replacement. For full details of the Abpromise,

please visit <https://www.abcam.com/abpromise> or contact our technical team.

Terms and conditions

- Guarantee only valid for products bought direct from Abcam or one of our authorized distributors