

## Product datasheet

# Anti-IRGM antibody ab69495

★☆☆☆☆ [1 Abreviews](#) [3 References](#) [1 Image](#)

### Overview

---

<b>Product name</b>	Anti-IRGM antibody
<b>Description</b>	Rabbit polyclonal to IRGM
<b>Host species</b>	Rabbit
<b>Tested applications</b>	<b>Suitable for:</b> WB
<b>Species reactivity</b>	<b>Reacts with:</b> Human
<b>Immunogen</b>	A 14 amino acid peptide near the center of human IRGM
<b>General notes</b>	<p>The Life Science industry has been in the grips of a reproducibility crisis for a number of years. Abcam is leading the way in addressing this with our range of recombinant monoclonal antibodies and knockout edited cell lines for gold-standard validation. Please check that this product meets your needs before purchasing.</p> <p>If you have any questions, special requirements or concerns, please send us an inquiry and/or contact our Support team ahead of purchase. Recommended alternatives for this product can be found below, along with publications, customer reviews and Q&amp;As</p>

### Properties

---

<b>Form</b>	Liquid
<b>Storage instructions</b>	Shipped at 4°C. Store at +4°C short term (1-2 weeks). Upon delivery aliquot. Store at -20°C. Avoid freeze / thaw cycle. Do Not Freeze.
<b>Storage buffer</b>	pH: 7.2 Preservative: 0.02% Sodium azide Constituent: PBS
<b>Purity</b>	Protein A purified
<b>Clonality</b>	Polyclonal
<b>Isotype</b>	IgG

### Applications

---

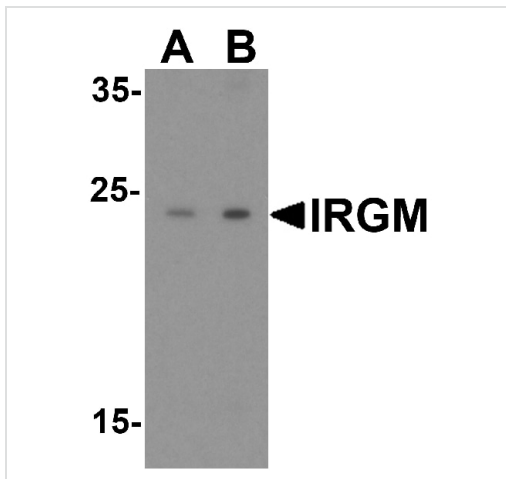
**The Abpromise guarantee** Our **Abpromise guarantee** covers the use of ab69495 in the following tested applications. The application notes include recommended starting dilutions; optimal dilutions/concentrations should be determined by the end user.

Application	Abreviews	Notes
WB	★☆☆☆☆ (1)	Use a concentration of 1 - 2 µg/ml. Detects a band of approximately 30 kDa (predicted molecular weight: 21-46 kDa). please refer to databases and the literature for the expected molecular weights of species orthologues.

## Target

<b>Function</b>	Putative GTPase which is required for clearance of acute protozoan and bacterial infections. Functions in innate immune response probably through regulation of autophagy. May regulate proinflammatory cytokine production and prevent endotoxemia upon infection. May also play a role in macrophages adhesion and motility.
<b>Tissue specificity</b>	Widely expressed (at protein level). Expressed in several tissues including colon, small bowel and peripheral blood leukocytes.
<b>Involvement in disease</b>	Defects in IRGM are the cause of susceptibility to inflammatory bowel disease type 19 (IBD19) [MIM:612278]. A chronic, relapsing inflammation of the gastrointestinal tract with a complex etiology. It is subdivided into Crohn disease and ulcerative colitis phenotypes. Crohn disease may affect any part of the gastrointestinal tract from the mouth to the anus, but most frequently it involves the terminal ileum and colon. Bowel inflammation is transmural and discontinuous; it may contain granulomas or be associated with intestinal or perianal fistulas. In contrast, in ulcerative colitis, the inflammation is continuous and limited to rectal and colonic mucosal layers; fistulas and granulomas are not observed. Both diseases include extraintestinal inflammation of the skin, eyes, or joints.
<b>Sequence similarities</b>	Belongs to the interferon-inducible GTPase family.
<b>Cellular localization</b>	Golgi apparatus membrane. Cell membrane. Cytoplasmic vesicle > phagosome membrane. Cytoplasmic vesicle > autophagosome membrane. Cell projection > phagocytic cup. Behaves like an integral membrane protein (By similarity). Recruited to the plasma membrane around forming phagocytic cups, it remains associated with maturing autophagosomes (By similarity). Preferentially associated with cis- and medial-Golgi.

## Images



Western blot analysis of IRGM in human brain lysate with ab69495 at (A) 1 and (B) 2 µg/mL.

Western blot - Anti-IRGM antibody (ab69495)

**Please note:** All products are "FOR RESEARCH USE ONLY. NOT FOR USE IN DIAGNOSTIC PROCEDURES"

#### Our Abpromise to you: Quality guaranteed and expert technical support

---

- Replacement or refund for products not performing as stated on the datasheet
- Valid for 12 months from date of delivery
- Response to your inquiry within 24 hours
- We provide support in Chinese, English, French, German, Japanese and Spanish
- Extensive multi-media technical resources to help you
- We investigate all quality concerns to ensure our products perform to the highest standards

If the product does not perform as described on this datasheet, we will offer a refund or replacement. For full details of the Abpromise, please visit <https://www.abcam.com/abpromise> or contact our technical team.

#### Terms and conditions

---

- Guarantee only valid for products bought direct from Abcam or one of our authorized distributors