

Product datasheet

Anti-ISG20 antibody [EPR8973] ab157477

Recombinant **RabMAb**

[1 References](#) [4 Images](#)

Overview

Product name	Anti-ISG20 antibody [EPR8973]
Description	Rabbit monoclonal [EPR8973] to ISG20
Host species	Rabbit
Tested applications	Suitable for: WB, IHC-P Unsuitable for: Flow Cyt, ICC/IF or IP
Species reactivity	Reacts with: Human
Immunogen	Synthetic peptide. This information is proprietary to Abcam and/or its suppliers.
Positive control	Daudi cell lysate; Human colon and tonsil tissues.
General notes	<p>This product is a recombinant monoclonal antibody, which offers several advantages including:</p> <ul style="list-style-type: none"> - High batch-to-batch consistency and reproducibility - Improved sensitivity and specificity - Long-term security of supply - Animal-free production <p>For more information see here.</p> <p>Our RabMAb[®] technology is a patented hybridoma-based technology for making rabbit monoclonal antibodies. For details on our patents, please refer to RabMAb[®] patents.</p> <p>Mouse, Rat: We have preliminary internal testing data to indicate this antibody may not react with these species. Please contact us for more information.</p>

Properties

Form	Liquid
Storage instructions	Shipped at 4°C. Store at -20°C.
Storage buffer	<p>pH: 7.2</p> <p>Preservative: 0.01% Sodium azide</p> <p>Constituents: 9% PBS, 40% Glycerol (glycerin, glycerine), 0.05% BSA, 50% Tissue culture supernatant</p>
Purity	Protein A purified
Clonality	Monoclonal

Clone number EPR8973

Isotype IgG

Applications

The Abpromise guarantee Our **Abpromise guarantee** covers the use of ab157477 in the following tested applications. The application notes include recommended starting dilutions; optimal dilutions/concentrations should be determined by the end user.

Application	Abreviews	Notes
WB		1/1000 - 1/5000. Predicted molecular weight: 20 kDa.
IHC-P		1/50 - 1/100. Perform heat mediated antigen retrieval with citrate buffer pH 6 before commencing with IHC staining protocol.

Application notes Is unsuitable for Flow Cyt, ICC/IF or IP.

Target

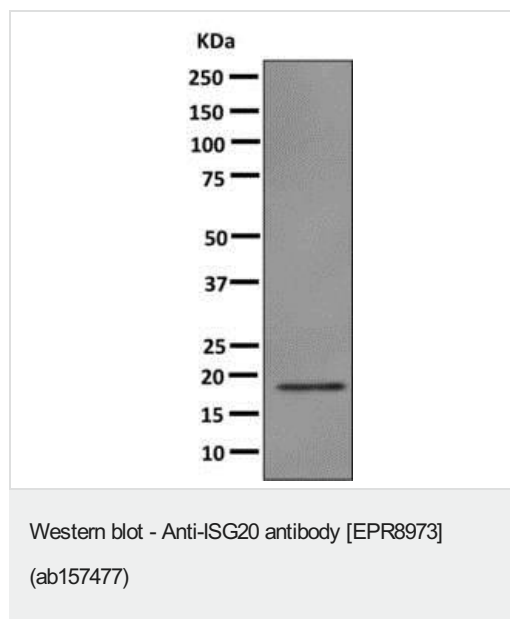
Function Exonuclease with specificity for single-stranded RNA and, to a lesser extent for DNA. Degrades RNA at a rate that is approximately 35-fold higher than its rate for single-stranded DNA. Involved in the antiviral function of IFN against RNA viruses.

Tissue specificity Highly expressed in peripheral blood leukocytes, spleen, thymus, colon and lung.

Sequence similarities Belongs to the exonuclease superfamily.

Cellular localization Nucleus.

Images

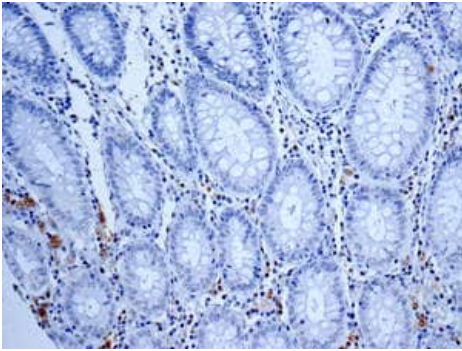


Anti-ISG20 antibody [EPR8973] (ab157477) at 1/1000 dilution + Daudi cell lysate at 10 µg

Secondary

HRP labelled goat anti-rabbit at 1/2000 dilution

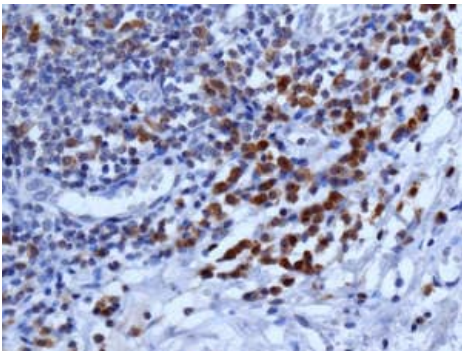
Predicted band size: 20 kDa



Immunohistochemistry (Formalin/PFA-fixed paraffin-embedded sections) - Anti-ISG20 antibody [EPR8973] (ab157477)

Immunohistochemical analysis of paraffin-embedded Human colon tissue labeling ISG20 with ab157477 at 1/50 dilution.

Perform heat mediated antigen retrieval with citrate buffer pH 6 before commencing with IHC staining protocol.



Immunohistochemistry (Formalin/PFA-fixed paraffin-embedded sections) - Anti-ISG20 antibody [EPR8973] (ab157477)

Immunohistochemical analysis of paraffin-embedded Human tonsil tissue labeling ISG20 with ab157477 at 1/50 dilution.

Perform heat mediated antigen retrieval with citrate buffer pH 6 before commencing with IHC staining protocol.

Why choose a recombinant antibody?



Research with confidence
Consistent and reproducible results



Long-term and scalable supply
Recombinant technology



Success from the first experiment
Confirmed specificity



Ethical standards compliant
Animal-free production

Anti-ISG20 antibody [EPR8973] (ab157477)

Please note: All products are "FOR RESEARCH USE ONLY. NOT FOR USE IN DIAGNOSTIC PROCEDURES"

Our Abpromise to you: Quality guaranteed and expert technical support

- Replacement or refund for products not performing as stated on the datasheet
- Valid for 12 months from date of delivery
- Response to your inquiry within 24 hours

- We provide support in Chinese, English, French, German, Japanese and Spanish
- Extensive multi-media technical resources to help you
- We investigate all quality concerns to ensure our products perform to the highest standards

If the product does not perform as described on this datasheet, we will offer a refund or replacement. For full details of the Abpromise, please visit <https://www.abcam.com/abpromise> or contact our technical team.

Terms and conditions

- Guarantee only valid for products bought direct from Abcam or one of our authorized distributors