




Anti-ITGA11 antibody ab114113

[2 References](#) [1 Image](#)

Overview

Product name	Anti-ITGA11 antibody
Description	Goat polyclonal to ITGA11
Host species	Goat
Tested applications	Suitable for: WB
Species reactivity	Reacts with: Mouse Predicted to work with: Rat 
Immunogen	Synthetic peptide: C-PTEEDLSHAPQRNH , corresponding to C terminal amino acids 1047-1060 of Mouse ITGA11 (NP_795896.4).  Run BLAST with  Run BLAST with
Positive control	Mouse skeletal muscle lysate
General notes	<p>The Life Science industry has been in the grips of a reproducibility crisis for a number of years. Abcam is leading the way in addressing this with our range of recombinant monoclonal antibodies and knockout edited cell lines for gold-standard validation. Please check that this product meets your needs before purchasing.</p> <p>If you have any questions, special requirements or concerns, please send us an inquiry and/or contact our Support team ahead of purchase. Recommended alternatives for this product can be found below, along with publications, customer reviews and Q&As</p>

Properties

Form	Liquid
Storage instructions	Shipped at 4°C. Upon delivery aliquot and store at -20°C. Avoid freeze / thaw cycles.
Storage buffer	pH: 7.30 Preservative: 0.02% Sodium azide Constituents: 0.5% BSA, 99.48% Tris buffered saline
Purity	Immunogen affinity purified
Purification notes	ab114113 was purified from goat serum by ammonium sulphate precipitation followed by antigen affinity chromatography using the immunizing peptide.
Clonality	Polyclonal

Isotype

IgG

Applications

The Abpromise guarantee

Our **Abpromise guarantee** covers the use of ab114113 in the following tested applications.

The application notes include recommended starting dilutions; optimal dilutions/concentrations should be determined by the end user.

Application	Abreviews	Notes
WB		Use a concentration of 1 - 3 µg/ml. Detects a band of approximately 140 kDa (predicted molecular weight: 133 kDa). 1 hour primary incubation is recommended for this product.

Target

Function

Integrin alpha-11/beta-1 is a receptor for collagen.

Tissue specificity

According to PubMed:10464311, highest levels of expression in uterus and heart, intermediate levels in skeletal muscle and intermediate to low levels in pancreas, kidney and placenta.
According to PubMed:10486209, also found in brain, colon, lung, small intestine, stomach, testis, salivary glands, thyroid glands and prostate. Very low levels in peripheral blood lymphocytes, fetal brain and fetal liver.

Sequence similarities

Belongs to the integrin alpha chain family.
Contains 7 FG-GAP repeats.
Contains 1 VWFA domain.

Developmental stage

Strongly up-regulated in differentiating fetal muscle cells (in vitro).

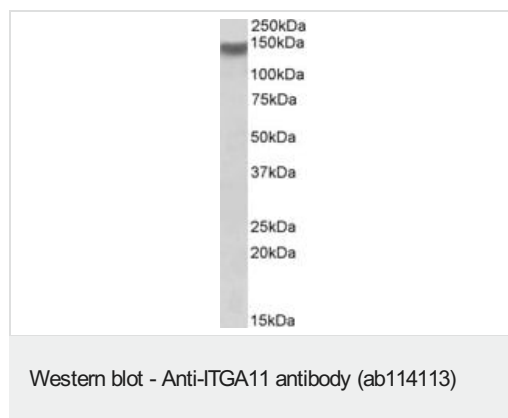
Domain

The integrin I-domain (insert) is a VWFA domain. Integrins with I-domains do not undergo protease cleavage.

Cellular localization

Membrane.

Images



Anti-ITGA11 antibody (ab114113) at 1 µg/ml + Mouse skeletal muscle lysate (in RIPA buffer) at 35 µg

Developed using the ECL technique.

Predicted band size: 133 kDa

Observed band size: 140 kDa

Primary incubation: 1 hour

Please note: All products are "FOR RESEARCH USE ONLY. NOT FOR USE IN DIAGNOSTIC PROCEDURES"

Our Abpromise to you: Quality guaranteed and expert technical support

- Replacement or refund for products not performing as stated on the datasheet
- Valid for 12 months from date of delivery
- Response to your inquiry within 24 hours

- We provide support in Chinese, English, French, German, Japanese and Spanish
- Extensive multi-media technical resources to help you
- We investigate all quality concerns to ensure our products perform to the highest standards

If the product does not perform as described on this datasheet, we will offer a refund or replacement. For full details of the Abpromise, please visit <https://www.abcam.com/abpromise> or contact our technical team.

Terms and conditions

- Guarantee only valid for products bought direct from Abcam or one of our authorized distributors