



## Product datasheet

# Anti-ITLN1 antibody ab232885

4 Images

### Overview

---

<b>Product name</b>	Anti-ITLN1 antibody
<b>Description</b>	Rabbit polyclonal to ITLN1
<b>Host species</b>	Rabbit
<b>Tested applications</b>	<b>Suitable for:</b> IHC-P, WB
<b>Species reactivity</b>	<b>Reacts with:</b> Mouse, Human
<b>Immunogen</b>	Recombinant fragment (His-tag) corresponding to Human ITLN1 aa 1-300. Expressed in E. coli. N-terminal tag. Database link: <a href="#">Q8WWA0</a>  <b>Run BLAST with</b>  <b>Run BLAST with</b>
<b>Positive control</b>	IHC-P: Human stomach and rectum tissue. WB: Recombinant human ITLN1 protein. Mouse small intestine lysate.
<b>General notes</b>	<p>The Life Science industry has been in the grips of a reproducibility crisis for a number of years. Abcam is leading the way in addressing this with our range of recombinant monoclonal antibodies and knockout edited cell lines for gold-standard validation. Please check that this product meets your needs before purchasing.</p> <p>If you have any questions, special requirements or concerns, please send us an inquiry and/or contact our Support team ahead of purchase. Recommended alternatives for this product can be found below, along with publications, customer reviews and Q&amp;As</p>

### Properties

---

<b>Form</b>	Liquid
<b>Storage instructions</b>	Shipped at 4°C. Store at +4°C short term (1-2 weeks). Upon delivery aliquot. Store at -20°C long term. Avoid freeze / thaw cycle.
<b>Storage buffer</b>	pH: 7.40 Preservative: 0.011% Proclin 300 Constituents: 55.77% Glycerol (glycerin, glycerine), 44.219% PBS
<b>Purity</b>	Protein A purified
<b>Purification notes</b>	Antigen-specific affinity chromatography followed by Protein A affinity chromatography.
<b>Clonality</b>	Polyclonal
<b>Isotype</b>	IgG

## Applications

---

**The Abpromise guarantee** Our **Abpromise guarantee** covers the use of ab232885 in the following tested applications.

The application notes include recommended starting dilutions; optimal dilutions/concentrations should be determined by the end user.

Application	Abreviews	Notes
IHC-P		Use a concentration of 5 - 20 µg/ml.
WB		Use a concentration of 0.5 - 2 µg/ml.

## Target

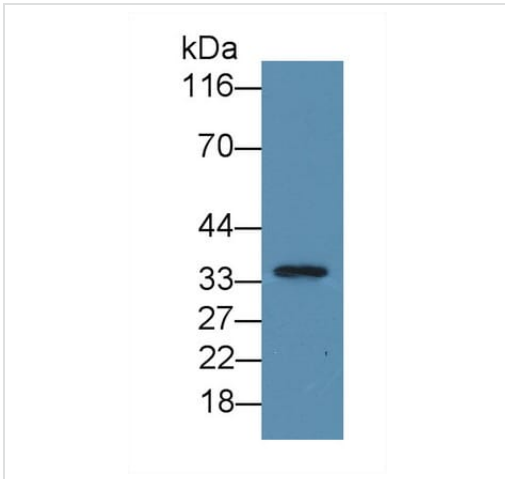
---

<b>Function</b>	Has no effect on basal glucose uptake but enhances insulin-stimulated glucose uptake in adipocytes. Increases AKT phosphorylation in the absence and presence of insulin. May play a role in the defense system against microorganisms. May specifically recognize carbohydrate chains of pathogens and bacterial components containing galactofuranosyl residues, in a calcium-dependent manner. May be involved in iron metabolism.
<b>Tissue specificity</b>	Highly expressed in omental adipose tissue where it is found in stromal vascular cells but not in fat cells but is barely detectable in subcutaneous adipose tissue (at protein level). Highly expressed in the small intestine. Also found in the heart, testis, colon, salivary gland, skeletal muscle, pancreas and thyroid and, to a lesser degree, in the uterus, spleen, prostate, lymph node and thymus.
<b>Sequence similarities</b>	Contains 1 fibrinogen C-terminal domain.
<b>Developmental stage</b>	Found in fetal small intestine and thymus.
<b>Post-translational modifications</b>	N-glycosylated.
<b>Cellular localization</b>	Cell membrane. Secreted. Enriched in lipid rafts.

---

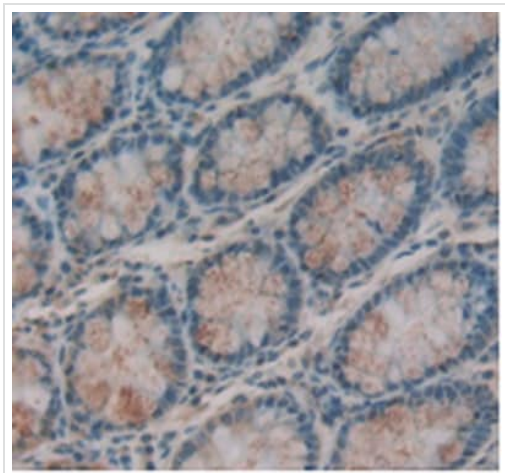
## Images

---



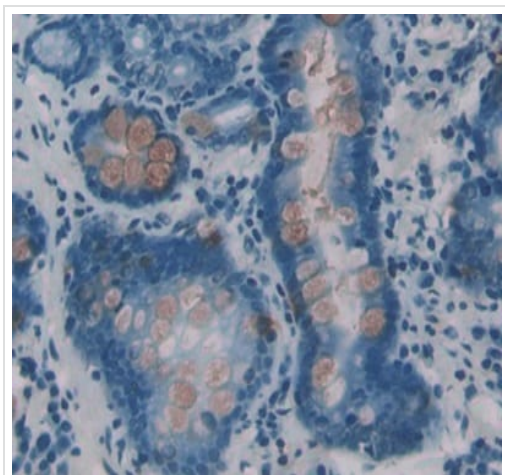
Western blot - Anti-ITLN1 antibody (ab232885)

Anti-ITLN1 antibody (ab232885) at 2  $\mu$ g/ml + Mouse small intestine lysate



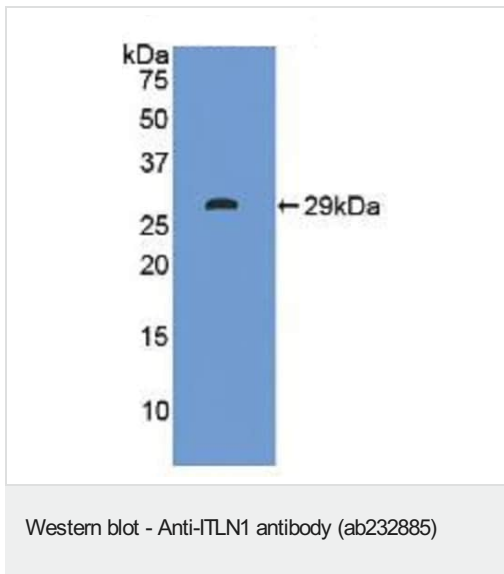
Immunohistochemistry (Formalin/PFA-fixed paraffin-embedded sections) - Anti-ITLN1 antibody (ab232885)

Formalin-fixed, paraffin-embedded human rectum tissue stained for ITLN1 with ab232885 at 20  $\mu$ g/ml in immunohistochemical analysis. DAB staining.



Immunohistochemistry (Formalin/PFA-fixed paraffin-embedded sections) - Anti-ITLN1 antibody (ab232885)

Formalin-fixed, paraffin-embedded human stomach tissue stained for ITLN1 with ab232885 at 20  $\mu$ g/ml in immunohistochemical analysis. DAB staining.



Anti-ITLN1 antibody (ab232885) at 2 µg/ml + Recombinant human ITLN1 protein

**Please note:** All products are "FOR RESEARCH USE ONLY. NOT FOR USE IN DIAGNOSTIC PROCEDURES"

#### Our Abpromise to you: Quality guaranteed and expert technical support

---

- Replacement or refund for products not performing as stated on the datasheet
- Valid for 12 months from date of delivery
- Response to your inquiry within 24 hours
- We provide support in Chinese, English, French, German, Japanese and Spanish
- Extensive multi-media technical resources to help you
- We investigate all quality concerns to ensure our products perform to the highest standards

If the product does not perform as described on this datasheet, we will offer a refund or replacement. For full details of the Abpromise, please visit <https://www.abcam.com/abpromise> or contact our technical team.

#### Terms and conditions

---

- Guarantee only valid for products bought direct from Abcam or one of our authorized distributors