



### Anti-ITPKC antibody ab188007

3 Images

#### Overview

<b>Product name</b>	Anti-ITPKC antibody
<b>Description</b>	Rabbit polyclonal to ITPKC
<b>Host species</b>	Rabbit
<b>Tested applications</b>	<b>Suitable for:</b> WB, IHC-P, ICC/IF
<b>Species reactivity</b>	<b>Reacts with:</b> Human
<b>Immunogen</b>	Recombinant fragment corresponding to Human ITPKC aa 250-400. Database link: <a href="#">Q96DU7</a>
	<div>  <a href="#">Run BLAST with</a> </div> <div>  <a href="#">Run BLAST with</a> </div>
<b>Positive control</b>	IHC-P:Human testis tissue WB: RT4 and U-251 MG sp cell lysates. ICC/IF: U-2OS cells
<b>General notes</b>	<p>The Life Science industry has been in the grips of a reproducibility crisis for a number of years. Abcam is leading the way in addressing this with our range of recombinant monoclonal antibodies and knockout edited cell lines for gold-standard validation. Please check that this product meets your needs before purchasing.</p> <p>If you have any questions, special requirements or concerns, please send us an inquiry and/or contact our Support team ahead of purchase. Recommended alternatives for this product can be found below, along with publications, customer reviews and Q&amp;As</p>

#### Properties

<b>Form</b>	Liquid
<b>Storage instructions</b>	Shipped at 4°C. Store at +4°C short term (1-2 weeks). Upon delivery aliquot. Store at -20°C long term. Avoid freeze / thaw cycle.
<b>Storage buffer</b>	pH: 7.20 Preservative: 0.02% Sodium azide Constituents: 59% PBS, 40% Glycerol (glycerin, glycerine)
<b>Purity</b>	Immunogen affinity purified
<b>Clonality</b>	Polyclonal
<b>Isotype</b>	IgG

#### Applications

## The Abpromise guarantee

Our **Abpromise guarantee** covers the use of ab188007 in the following tested applications.

The application notes include recommended starting dilutions; optimal dilutions/concentrations should be determined by the end user.

Application	Abreviews	Notes
WB		Use a concentration of 0.04 - 0.4 µg/ml. Predicted molecular weight: 75 kDa.
IHC-P		1/1000 - 1/2500. Perform heat mediated antigen retrieval with citrate buffer pH 6 before commencing with IHC staining protocol.
ICC/IF		Use a concentration of 0.25 - 2 µg/ml.

## Target

### Function

Can phosphorylate inositol 2,4,5-triphosphate to inositol 2,4,5,6-tetraphosphate.

### Tissue specificity

Highly expressed in pancreas, skeletal muscle, liver, placenta and weakly in kidney and brain.

### Involvement in disease

Defects in ITPKC are a cause of Kawasaki disease (KWD) [MIM:611775]; also known as mucocutaneous lymph node syndrome or infantile polyarteritis. Kawasaki disease is an acute, self-limited vasculitis of infants and children characterized by prolonged fever unresponsive to antibiotics, polymorphous skin rash, erythema of the oral mucosa, lips, and tongue, erythema of the palms and soles, bilateral conjunctival injection, and cervical lymphadenopathy. Coronary artery aneurysms develop in 15 to 25% of those left untreated, making Kawasaki disease the leading cause of acquired heart disease among children in developed countries.

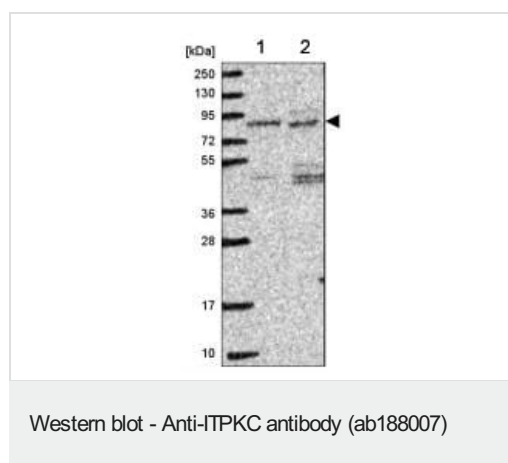
### Sequence similarities

Belongs to the inositol phosphokinase (IPK) family.

### Cellular localization

Nucleus. Cytoplasm. Shuttles actively between nucleus and cytoplasm with both nuclear import and nuclear export activity.

## Images

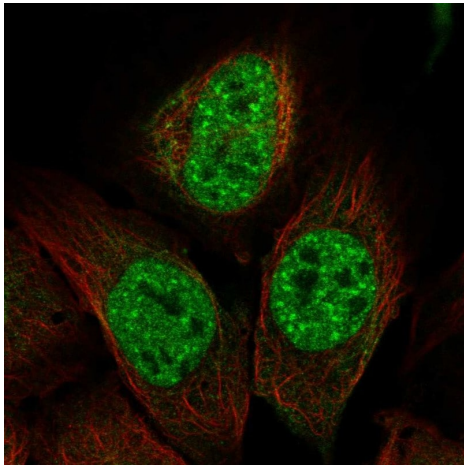


**All lanes :** Anti-ITPKC antibody (ab188007) at 1/500 dilution

**Lane 1 :** RT4 cell lysate

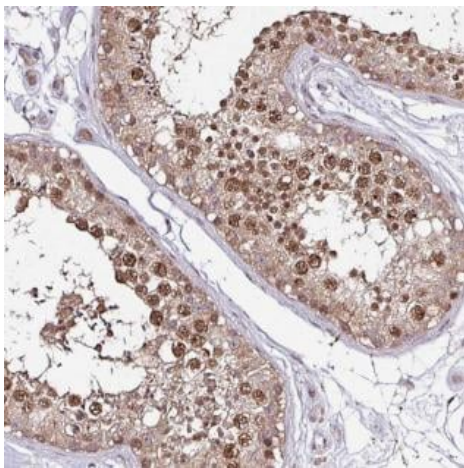
**Lane 2 :** U-251MG sp cell lysate

**Predicted band size:** 75 kDa



Immunocytochemistry/immunofluorescent analysis of U-2OS cells staining ITPKC antibody with **ab18807** at 1 µg/ml (green).

Immunocytochemistry/ Immunofluorescence - Anti-ITPKC antibody (ab188007)



Immunohistochemical analysis of paraffin-embedded Human testis tissue labeling ITPKC with ab188007 at 1/1000 dilution.

Immunohistochemistry (Formalin/PFA-fixed paraffin-embedded sections) - Anti-ITPKC antibody (ab188007)

**Please note:** All products are "FOR RESEARCH USE ONLY. NOT FOR USE IN DIAGNOSTIC PROCEDURES"

### Our Abpromise to you: Quality guaranteed and expert technical support

- Replacement or refund for products not performing as stated on the datasheet
- Valid for 12 months from date of delivery
- Response to your inquiry within 24 hours
- We provide support in Chinese, English, French, German, Japanese and Spanish
- Extensive multi-media technical resources to help you

- We investigate all quality concerns to ensure our products perform to the highest standards

If the product does not perform as described on this datasheet, we will offer a refund or replacement. For full details of the Abpromise, please visit <https://www.abcam.com/abpromise> or contact our technical team.

#### **Terms and conditions**

---

- Guarantee only valid for products bought direct from Abcam or one of our authorized distributors