


## Product datasheet

# Anti-IZUMO1 antibody ab118188

1 Image

### Overview

---

<b>Product name</b>	Anti-IZUMO1 antibody
<b>Description</b>	Rabbit polyclonal to IZUMO1
<b>Host species</b>	Rabbit
<b>Tested applications</b>	<b>Suitable for:</b> WB
<b>Species reactivity</b>	<b>Reacts with:</b> Human <b>Predicted to work with:</b> Mouse, Rat 
<b>Immunogen</b>	Recombinant fragment, corresponding to amino acids 51-211 of Human IZUMO1 (BC034769).
<b>Positive control</b>	Fetal heart lysate
<b>General notes</b>	<p>The Life Science industry has been in the grips of a reproducibility crisis for a number of years. Abcam is leading the way in addressing this with our range of recombinant monoclonal antibodies and knockout edited cell lines for gold-standard validation. Please check that this product meets your needs before purchasing.</p> <p>If you have any questions, special requirements or concerns, please send us an inquiry and/or contact our Support team ahead of purchase. Recommended alternatives for this product can be found below, along with publications, customer reviews and Q&amp;As</p>

### Properties

---

<b>Form</b>	Lyophilized:Reconstitute in 200µl sterile water
<b>Storage instructions</b>	Shipped at 4°C. Upon delivery aliquot and store at -20°C. Avoid repeated freeze / thaw cycles.
<b>Storage buffer</b>	Preservative: 0.02% Sodium azide Constituents: 1% BSA, 98% PBS
<b>Purity</b>	Immunogen affinity purified
<b>Clonality</b>	Polyclonal
<b>Isotype</b>	IgG

### Applications

---

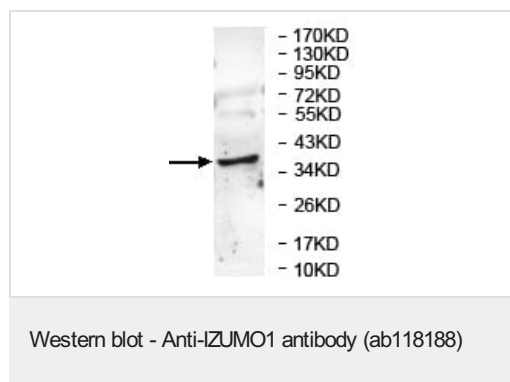
**The Abpromise guarantee** Our **Abpromise guarantee** covers the use of ab118188 in the following tested applications. The application notes include recommended starting dilutions; optimal dilutions/concentrations should be determined by the end user.

Application	Abreviews	Notes
WB		1/500 - 1/1000. Predicted molecular weight: 39 kDa.

## Target

<b>Function</b>	Involved in the fertilization process. May be involved in the fusion of the sperm with the egg.
<b>Tissue specificity</b>	Sperm-specific (at protein level). Detectable on sperm surface only after the acrosome reaction.
<b>Sequence similarities</b>	Belongs to the Izumo family. Contains 1 Ig-like C2-type (immunoglobulin-like) domain.
<b>Post-translational modifications</b>	N-glycosylated. Glycosylation is not essential for fusion and for proper protein trafficking in sperm. Phosphorylated.
<b>Cellular localization</b>	Membrane.

## Images



Anti-IZUMO1 antibody (ab118188) at 1/500 dilution + Fetal heart lysate

**Predicted band size:** 39 kDa

**Please note:** All products are "FOR RESEARCH USE ONLY. NOT FOR USE IN DIAGNOSTIC PROCEDURES"

## Our Abpromise to you: Quality guaranteed and expert technical support

- Replacement or refund for products not performing as stated on the datasheet
- Valid for 12 months from date of delivery
- Response to your inquiry within 24 hours
- We provide support in Chinese, English, French, German, Japanese and Spanish
- Extensive multi-media technical resources to help you
- We investigate all quality concerns to ensure our products perform to the highest standards

If the product does not perform as described on this datasheet, we will offer a refund or replacement. For full details of the Abpromise, please visit <https://www.abcam.com/abpromise> or contact our technical team.

## Terms and conditions

- Guarantee only valid for products bought direct from Abcam or one of our authorized distributors