


Product datasheet

Anti-JLP antibody ab12331

★★★★★ [1 Abreviews](#) [21 References](#) [3 Images](#)

Overview

Product name	Anti-JLP antibody
Description	Rabbit polyclonal to JLP
Host species	Rabbit
Tested applications	Suitable for: IHC-P, WB, IP
Species reactivity	Reacts with: Mouse, Human Predicted to work with: Guinea pig, Dog, Pig, Chimpanzee, Rhesus monkey, Opossum, Orangutan, Elephant 
Immunogen	Synthetic peptide within Human JLP aa 1-100. The exact immunogen sequence used to generate this antibody is proprietary information. If additional detail on the immunogen is needed to determine the suitability of the antibody for your needs, please <u>contact</u> our Scientific Support team to discuss your requirements. Database link: <u>O60271</u>
Positive control	IP: HeLa nuclear extract. WB: HeLa, 293T, Jurkat, 3T3 cell lysates IHC-P: Human testis, and seminoma tissues
General notes	<p>The Life Science industry has been in the grips of a reproducibility crisis for a number of years. Abcam is leading the way in addressing this with our range of recombinant monoclonal antibodies and knockout edited cell lines for gold-standard validation. Please check that this product meets your needs before purchasing.</p> <p>If you have any questions, special requirements or concerns, please send us an inquiry and/or contact our Support team ahead of purchase. Recommended alternatives for this product can be found below, along with publications, customer reviews and Q&As</p>

Properties

Form	Liquid
Storage instructions	Shipped at 4°C. Upon delivery aliquot and store at -20°C. Avoid freeze / thaw cycles.
Storage buffer	pH: 7 Preservative: 0.09% Sodium azide Constituents: 0.021% PBS, 1.764% Sodium citrate, 1.815% Tris
Purity	Immunogen affinity purified
Purification notes	This antibody is affinity purified.

Clonality	Polyclonal
Isotype	IgG

Applications

The Abpromise guarantee Our **Abpromise guarantee** covers the use of ab12331 in the following tested applications. The application notes include recommended starting dilutions; optimal dilutions/concentrations should be determined by the end user.

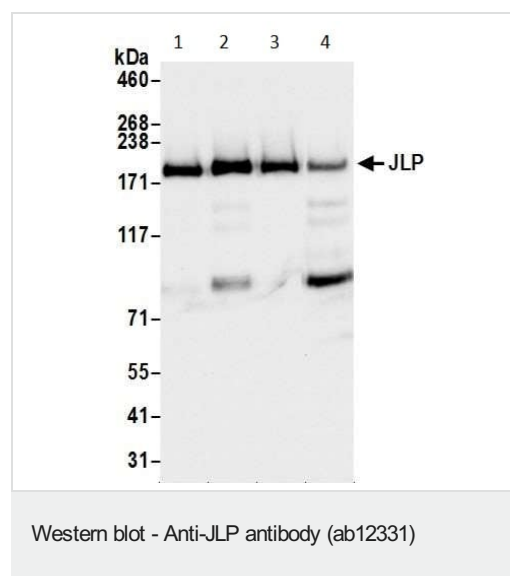
Application	Abreviews	Notes
IHC-P		1/1000 - 1/5000. Perform heat mediated antigen retrieval with citrate buffer pH 6 before commencing with IHC staining protocol.
WB	★★★★★ (1)	1/1000 - 1/10000. Predicted molecular weight: 156.8 kDa.
IP		Use a concentration of 2 - 5 µg/ml.

Target

Relevance JLP is a member of the JNK-interacting protein (JIP) group of scaffold proteins which selectively mediate JNK signaling by aggregating specific components of the MAPK cascade to form a functional JNK signaling module.

Cellular localization Cytoplasm. Cytoplasm, perinuclear region. Note: Perinuclear distribution in response to stress signals such as UV radiation.

Images



All lanes : Anti-JLP antibody (ab12331) at 0.1 µg/ml

Lane 1 : HeLa cell lysate

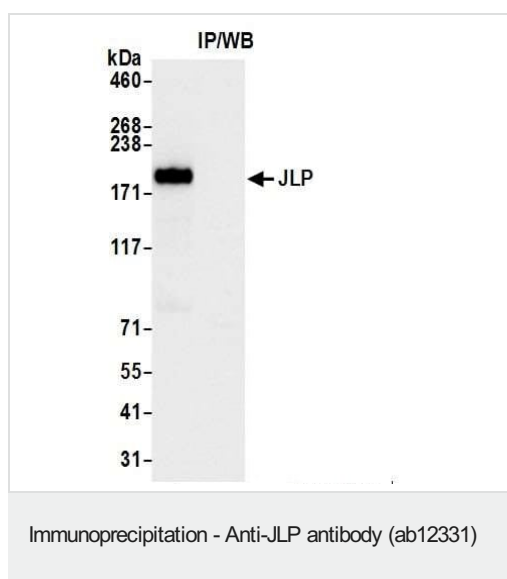
Lane 2 : 293T cell lysate

Lane 3 : Jurkat cell lysate

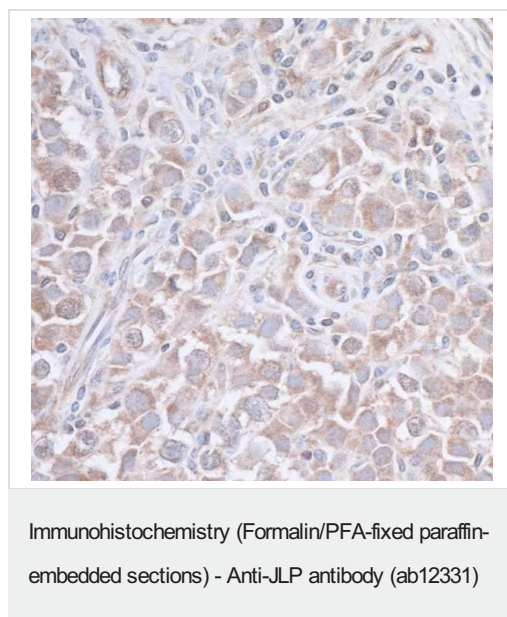
Lane 4 : 3T3 cell lysate

Lysates/proteins at 50 µg per lane.

Predicted band size: 156.8 kDa



Immunoprecipitation analysis of HeLa whole cell lysate (1 mg for IP, 20% of IP loaded). ab12331 was used for immunoprecipitation at 3 µg/mg lysate and used for western blot at 1 µg/ml. Lanes 1 and 2 - ab12331 IP, Lane 3 - control IgG.



Immunohistochemistry (Formalin/PFA-fixed paraffin-embedded sections) of Human seminoma using ab12331 at 1/1000 with and HRP- conjugated goat anti-rabbit secondary antibody.

Please note: All products are "FOR RESEARCH USE ONLY. NOT FOR USE IN DIAGNOSTIC PROCEDURES"

Our Abpromise to you: Quality guaranteed and expert technical support

- Replacement or refund for products not performing as stated on the datasheet
- Valid for 12 months from date of delivery
- Response to your inquiry within 24 hours
- We provide support in Chinese, English, French, German, Japanese and Spanish
- Extensive multi-media technical resources to help you
- We investigate all quality concerns to ensure our products perform to the highest standards

If the product does not perform as described on this datasheet, we will offer a refund or replacement. For full details of the Abpromise, please visit <https://www.abcam.com/abpromise> or contact our technical team.

Terms and conditions

- Guarantee only valid for products bought direct from Abcam or one of our authorized distributors