


Product datasheet

Anti-JM4/PRAF2 antibody ab53113

★★★★★ [2 Abreviews](#) [2 References](#) [3 Images](#)

Overview

Product name	Anti-JM4/PRAF2 antibody
Description	Rabbit polyclonal to JM4/PRAF2
Host species	Rabbit
Tested applications	Suitable for: IHC-P, ELISA, WB
Species reactivity	Reacts with: Mouse, Human Predicted to work with: Rat 
Immunogen	Synthetic peptide. This information is proprietary to Abcam and/or its suppliers.
General notes	<p>The Life Science industry has been in the grips of a reproducibility crisis for a number of years. Abcam is leading the way in addressing this with our range of recombinant monoclonal antibodies and knockout edited cell lines for gold-standard validation. Please check that this product meets your needs before purchasing.</p> <p>If you have any questions, special requirements or concerns, please send us an inquiry and/or contact our Support team ahead of purchase. Recommended alternatives for this product can be found below, along with publications, customer reviews and Q&As</p>

Properties

Form	Liquid
Storage instructions	Shipped at 4°C. Store at -20°C. Stable for 12 months at -20°C.
Storage buffer	<p>pH: 7.40</p> <p>Preservative: 0.02% Sodium azide</p> <p>Constituents: 50% Glycerol (glycerin, glycerine), 0.87% Sodium chloride, PBS</p> <p>Without Mg+2 and Ca+2</p>
Purity	Immunogen affinity purified
Clonality	Polyclonal
Isotype	IgG

Applications

The Abpromise guarantee

Our **Abpromise guarantee** covers the use of ab53113 in the following tested applications.

The application notes include recommended starting dilutions; optimal dilutions/concentrations should be determined by the end user.

Application	Abreviews	Notes
IHC-P		Use at an assay dependent concentration.
ELISA		Use at an assay dependent concentration.
WB	★★★★★ (1)	1/300 - 1/1000. Detects a band of approximately 19 kDa (predicted molecular weight: 19 kDa).

Target

Function

May be involved in ER/Golgi transport and vesicular traffic. Plays a proapoptotic role in cerulenin-induced neuroblastoma apoptosis.

Tissue specificity

Strong expression in the brain, small intestine, lung, spleen, and pancreas as well as in tumor tissues of the breast, colon, lung and ovary, with a weaker expression in normal tissues of the same patient. High expression in neuroblastic tumors. Strongly expressed in Purkinje cells and more moderately in cells of the molecular and the granular layers in the cerebellum. Detected in neuronal cells, but not in non-neuronal cells in the cerebral cortex, hippocampus, and lateral ventricles.

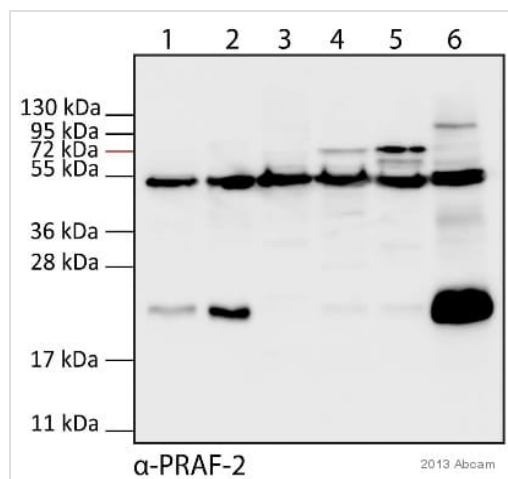
Sequence similarities

Belongs to the PRA1 family.

Cellular localization

Endosome membrane.

Images



Western blot - Anti-JM4/PRAF2 antibody (ab53113)

This image is courtesy of an anonymous Abreview

All lanes : Anti-JM4/PRAF2 antibody (ab53113) at 1/300 dilution

Lane 1 : Mouse spleen whole tissue lysate

Lane 2 : Mouse braint whole tissue lysate

Lane 3 : Mouse heart whole tissue lysate

Lane 4 : Mouse kidney whole tissue lysate

Lane 5 : Mouse liver whole tissue lysate

Lane 6 : Mouse embryonic fibroblasts lysate

Lysates/proteins at 40 μ g per lane.

Secondary

All lanes : HRP-conjugated Goat anti-rabbit at 1/10000 dilution

Developed using the ECL technique.

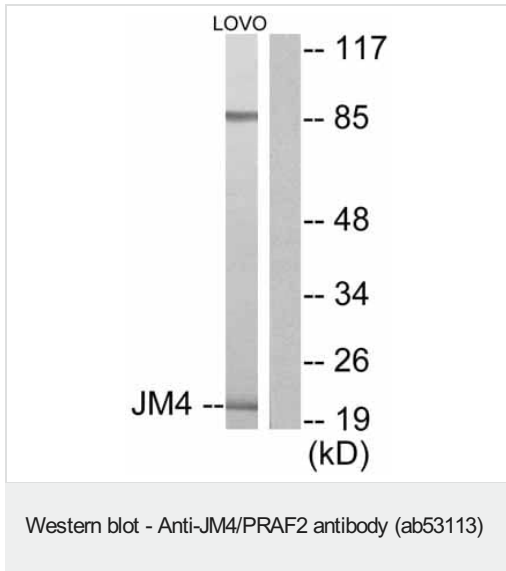
Performed under reducing conditions.

Predicted band size: 19 kDa

Observed band size: 22 kDa

Additional bands at: 55 kDa (possible non-specific binding)

Exposure time: 20 seconds



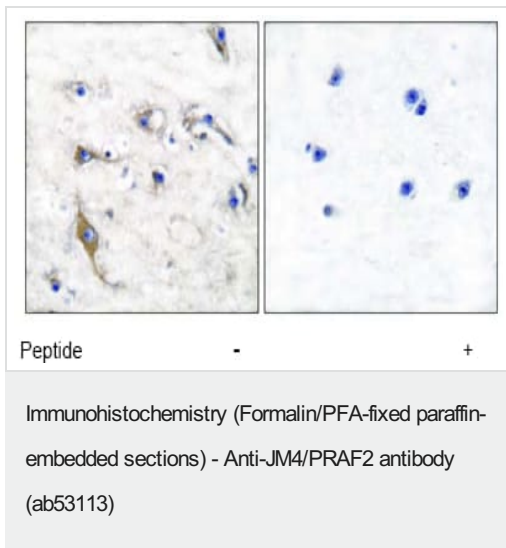
All lanes : Anti-JM4/PRAF2 antibody (ab53113) at 1/300 dilution

Lane 1 : LOVO cell extract

Lane 2 : LOVO cell extract with immunising peptide

Predicted band size: 19 kDa

Observed band size: 19 kDa



ab53113 at 1/50 dilution staining JM4/PRAF2 in human brain tissue by Immunohistochemistry, Paraffin embedded tissue, in the absence and presence of the immunising peptide.

Please note: All products are "FOR RESEARCH USE ONLY. NOT FOR USE IN DIAGNOSTIC PROCEDURES"

Our Abpromise to you: Quality guaranteed and expert technical support

- Replacement or refund for products not performing as stated on the datasheet
- Valid for 12 months from date of delivery
- Response to your inquiry within 24 hours
- We provide support in Chinese, English, French, German, Japanese and Spanish
- Extensive multi-media technical resources to help you

- We investigate all quality concerns to ensure our products perform to the highest standards

If the product does not perform as described on this datasheet, we will offer a refund or replacement. For full details of the Abpromise, please visit <https://www.abcam.com/abpromise> or contact our technical team.

Terms and conditions

- Guarantee only valid for products bought direct from Abcam or one of our authorized distributors