

## Product datasheet

# Anti-JPH3 antibody ab79063

2 Images

### Overview

---

|                            |   |
|----------------------------|---|
| <b>Product name</b>        | Anti-JPH3 antibody  |
| <b>Description</b>         | Rabbit polyclonal to JPH3   |
| <b>Host species</b>        | Rabbit  |
| <b>Tested applications</b> | <b>Suitable for:</b> ICC/IF, WB   |
| <b>Species reactivity</b>  | <b>Reacts with:</b> Human   |
| <b>Immunogen</b>           | A synthetic 18 amino acid peptide near the carboxy terminus of human JPH3 (protein accession number: NP_065706)   |
| <b>General notes</b>       | <p>The Life Science industry has been in the grips of a reproducibility crisis for a number of years. Abcam is leading the way in addressing this with our range of recombinant monoclonal antibodies and knockout edited cell lines for gold-standard validation. Please check that this product meets your needs before purchasing.</p> <p>If you have any questions, special requirements or concerns, please send us an inquiry and/or contact our Support team ahead of purchase. Recommended alternatives for this product can be found below, along with publications, customer reviews and Q&amp;As</p> |

### Properties

---

|                             |   |
|-----------------------------|---|
| <b>Form</b>                 | Liquid  |
| <b>Storage instructions</b> | Shipped at 4°C. Store at +4°C.                                  |
| <b>Storage buffer</b>       | pH: 7.2<br>Preservative: 0.02% Sodium azide<br>Constituent: PBS |
| <b>Purity</b>               | Immunogen affinity purified                                     |
| <b>Purification notes</b>   | Affinity chromatography purified via peptide column             |
| <b>Clonality</b>            | Polyclonal  |
| <b>Isotype</b>              | IgG   |

### Applications

---

**The Abpromise guarantee** Our **Abpromise guarantee** covers the use of ab79063 in the following tested applications.

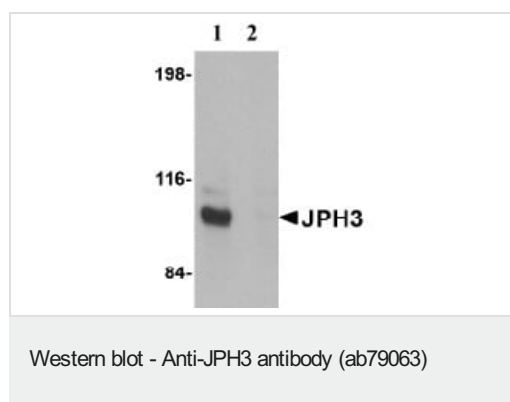
The application notes include recommended starting dilutions; optimal dilutions/concentrations should be determined by the end user.

| Application | Abreviews | Notes   |
|-------------|-----------|---|
| ICC/IF      |           | Use a concentration of 20 µg/ml.  |
| WB          |           | Use a concentration of 1 - 2 µg/ml. Predicted molecular weight: 81 kDa. |

## Target

|                               |  |
|-------------------------------|--|
| <b>Function</b>               | Contributes to the stabilization of the junctional membrane complexes, which are common to excitable cells and mediate cross-talk between cell surface and intracellular ion channels. Probably acts by anchoring the plasma membrane and endoplasmic reticulum. May play an active role in certain neurons involved in motor coordination.  |
| <b>Tissue specificity</b>     | Specifically expressed in brain.   |
| <b>Involvement in disease</b> | Defects in JPH3 are the cause of Huntington disease-like type 2 (HDL2) [MIM:606438]. Huntington disease (HD) is a neurodegenerative disorder resulting primarily from the loss of medium spiny projection neurons in the striatum, especially in the caudate nucleus, and, to a lesser extent, atrophy of mesencephalic and cortical structures. The typical clinical picture of HD combines familial adult onset chorea and subcortical dementia that usually begin during the fourth decade of life. |
| <b>Sequence similarities</b>  | Belongs to the junctophilin family.<br>Contains 8 MORN repeats.  |
| <b>Domain</b>                 | The MORN (membrane occupation and recognition nexus) repeats contribute to the plasma membrane binding, possibly by interacting with phospholipids.  |
| <b>Cellular localization</b>  | Cell membrane. Endoplasmic reticulum membrane. Localized predominantly on the plasma membrane. The transmembrane domain is anchored in endoplasmic reticulum membrane, while the N-terminal part associates with the plasma membrane.  |

## Images



**All lanes :** Anti-JPH3 antibody (ab79063) at 1 µg/ml

**Lane 1 :** Daudi cell lysate

**Lane 2 :** Daudi cell lysate with blocking peptide

Lysates/proteins at 15 µg per lane.

**Predicted band size:** 81 kDa

**Observed band size:** 100 kDa

Immunocytochemistry/ Immunofluorescence - Anti-JPH3 antibody (ab79063)

Immunofluorescence of JPH3 in Human Brain cells using ab79063 at 20 ug/ml.

**Please note:** All products are "FOR RESEARCH USE ONLY. NOT FOR USE IN DIAGNOSTIC PROCEDURES"

### **Our Abpromise to you: Quality guaranteed and expert technical support**

---

- Replacement or refund for products not performing as stated on the datasheet
- Valid for 12 months from date of delivery
- Response to your inquiry within 24 hours
- We provide support in Chinese, English, French, German, Japanese and Spanish
- Extensive multi-media technical resources to help you
- We investigate all quality concerns to ensure our products perform to the highest standards

If the product does not perform as described on this datasheet, we will offer a refund or replacement. For full details of the Abpromise, please visit <https://www.abcam.com/abpromise> or contact our technical team.

### **Terms and conditions**

---

- Guarantee only valid for products bought direct from Abcam or one of our authorized distributors