

## Product datasheet

### Anti-JunD antibody ab28837

★★★★★ [1 Abreviews](#) [10 References](#) [2 Images](#)

#### Overview

<b>Product name</b>	Anti-JunD antibody
<b>Description</b>	Rabbit polyclonal to JunD
<b>Host species</b>	Rabbit
<b>Tested applications</b>	<b>Suitable for:</b> IHC-P, WB
<b>Species reactivity</b>	<b>Reacts with:</b> Human
<b>Immunogen</b>	Synthetic non-phosphopeptide derived from human JunD around the phosphorylation site of Serine 255.
<b>General notes</b>	<p>The Life Science industry has been in the grips of a reproducibility crisis for a number of years. Abcam is leading the way in addressing this with our range of recombinant monoclonal antibodies and knockout edited cell lines for gold-standard validation. Please check that this product meets your needs before purchasing.</p> <p>If you have any questions, special requirements or concerns, please send us an inquiry and/or contact our Support team ahead of purchase. Recommended alternatives for this product can be found below, along with publications, customer reviews and Q&amp;As</p>

#### Properties

<b>Form</b>	Liquid
<b>Storage instructions</b>	Shipped at 4°C. Store at +4°C short term (1-2 weeks). Upon delivery aliquot. Store at -20°C long term.
<b>Storage buffer</b>	<p>pH: 7.40</p> <p>Preservative: 0.02% Sodium azide</p> <p>Constituents: PBS, 50% Glycerol, 0.87% Sodium chloride</p>
<b>Purity</b>	Without Mg <sup>2+</sup> and Ca <sup>2+</sup>
<b>Clonality</b>	Immunogen affinity purified
<b>Isotype</b>	Polyclonal
	IgG

#### Applications

## The Abpromise guarantee

Our **Abpromise guarantee** covers the use of ab28837 in the following tested applications.

The application notes include recommended starting dilutions; optimal dilutions/concentrations should be determined by the end user.

Application	Abreviews	Notes
IHC-P		Use at an assay dependent concentration.
WB		1/500 - 1/1000. Predicted molecular weight: 35 kDa.

## Target

### Function

Transcription factor binding AP-1 sites.

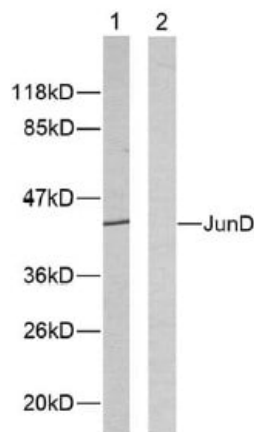
### Sequence similarities

Belongs to the bZIP family. Jun subfamily.  
Contains 1 bZIP domain.

### Cellular localization

Nucleus.

## Images



Western blot - Anti-JunD antibody (ab28837)

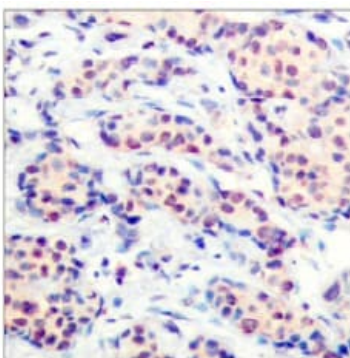
**Lane 1** : Anti-JunD antibody (ab28837) at 1/500 dilution

**Lane 2** : Anti-JunD antibody (ab28837) at 1/500 dilution  
(preincubated with synthesized peptide.)

**All lanes** : extracts from Hela cells.

**Predicted band size:** 35 kDa

**Observed band size:** 43 kDa



Immunohistochemistry (Formalin/PFA-fixed paraffin-embedded sections) - Anti-JunD antibody (ab28837)

Immunohistochemical analysis of paraffin embedded human breast carcinoma, using 1/50 JunD Antibody(ab28837).

**Please note:** All products are "FOR RESEARCH USE ONLY. NOT FOR USE IN DIAGNOSTIC PROCEDURES"

### **Our Abpromise to you: Quality guaranteed and expert technical support**

---

- Replacement or refund for products not performing as stated on the datasheet
- Valid for 12 months from date of delivery
- Response to your inquiry within 24 hours
- We provide support in Chinese, English, French, German, Japanese and Spanish
- Extensive multi-media technical resources to help you
- We investigate all quality concerns to ensure our products perform to the highest standards

If the product does not perform as described on this datasheet, we will offer a refund or replacement. For full details of the Abpromise, please visit <https://www.abcam.com/abpromise> or contact our technical team.

### **Terms and conditions**

---

- Guarantee only valid for products bought direct from Abcam or one of our authorized distributors