




Product datasheet

Anti-JWA antibody ab113631

3 Images

Overview

Product name	Anti-JWA antibody
Description	Goat polyclonal to JWA
Host species	Goat
Tested applications	Suitable for: WB, IHC-P
Species reactivity	Reacts with: Human Predicted to work with: Cynomolgus monkey, Orangutan 
Immunogen	Synthetic peptide: C-NRLTDYISKVKE , corresponding to C terminal amino acids 177-188 of Human JWA  Run BLAST with  Run BLAST with
Positive control	Human small intestine (submucosal plexus) and tonsil tissues; Human brain tissue lysate
General notes	<p>The Life Science industry has been in the grips of a reproducibility crisis for a number of years. Abcam is leading the way in addressing this with our range of recombinant monoclonal antibodies and knockout edited cell lines for gold-standard validation. Please check that this product meets your needs before purchasing.</p> <p>If you have any questions, special requirements or concerns, please send us an inquiry and/or contact our Support team ahead of purchase. Recommended alternatives for this product can be found below, along with publications, customer reviews and Q&As</p>

Properties

Form	Liquid
Storage instructions	Shipped at 4°C. Upon delivery aliquot and store at -20°C. Avoid freeze / thaw cycles.
Storage buffer	pH: 7.30 Preservative: 0.02% Sodium azide Constituents: 0.5% BSA, 99% Tris buffered saline
Purity	Immunogen affinity purified
Clonality	Polyclonal
Isotype	IgG

Applications

The Abpromise guarantee

Our **Abpromise guarantee** covers the use of ab113631 in the following tested applications.

The application notes include recommended starting dilutions; optimal dilutions/concentrations should be determined by the end user.

Application	Abreviews	Notes
WB		Use a concentration of 0.1 - 0.3 µg/ml. Predicted molecular weight: 21 kDa.
IHC-P		Use a concentration of 3.75 µg/ml.

Target

Function

Regulates intracellular concentrations of taurine and glutamate. Negatively modulates SLC1A1/EAAC1 glutamate transport activity by decreasing its affinity for glutamate. May be involved in membrane traffic.

Sequence similarities

Belongs to the PRA1 family.

Cellular localization

Endoplasmic reticulum membrane. Cytoplasm. Also exists as a soluble form in the cytoplasm. Associated with microtubules.

Images

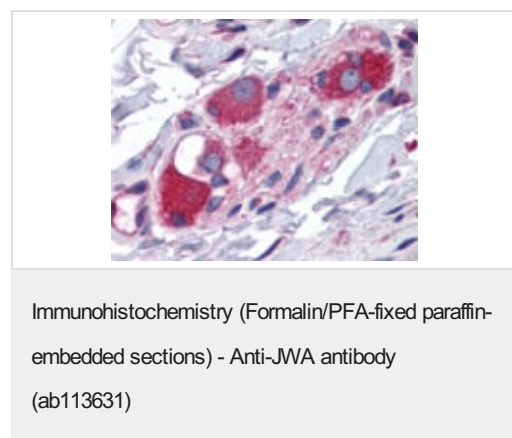


Anti-JWA antibody (ab113631) at 0.1 µg/ml + Human brain tissue lysate (in RIPA buffer) at 35 µg

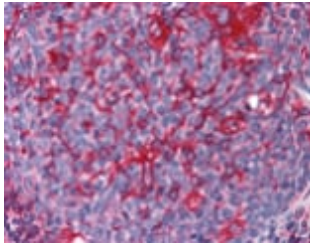
Developed using the ECL technique.

Predicted band size: 21 kDa

Primary incubation: 1 hour.



ab113631, at 3.75 µg/ml, staining JWA in formalin fixed, paraffin embedded Human small intestine tissue (submucosal plexus) tissue by Immunohistochemistry.



ab113631, at 3.75 µg/ml, staining JWA in formalin fixed, paraffin embedded Human small tonsil tissue by Immunohistochemistry.

Immunohistochemistry (Formalin/PFA-fixed paraffin-embedded sections) - Anti-JWA antibody (ab113631)

Please note: All products are "FOR RESEARCH USE ONLY. NOT FOR USE IN DIAGNOSTIC PROCEDURES"

Our Abpromise to you: Quality guaranteed and expert technical support

- Replacement or refund for products not performing as stated on the datasheet
- Valid for 12 months from date of delivery
- Response to your inquiry within 24 hours
- We provide support in Chinese, English, French, German, Japanese and Spanish
- Extensive multi-media technical resources to help you
- We investigate all quality concerns to ensure our products perform to the highest standards

If the product does not perform as described on this datasheet, we will offer a refund or replacement. For full details of the Abpromise, please visit <https://www.abcam.com/abpromise> or contact our technical team.

Terms and conditions

- Guarantee only valid for products bought direct from Abcam or one of our authorized distributors