


### Anti-K Cadherin/CDH6 antibody ab197845

★★★★★ [2 Abreviews](#) [2 References](#) [2 Images](#)

#### Overview

<b>Product name</b>	Anti-K Cadherin/CDH6 antibody
<b>Description</b>	Rabbit polyclonal to K Cadherin/CDH6
<b>Host species</b>	Rabbit
<b>Tested applications</b>	<b>Suitable for:</b> WB, IHC-P
<b>Species reactivity</b>	<b>Reacts with:</b> Human <b>Predicted to work with:</b> Mouse, Rat 
<b>Immunogen</b>	Fusion protein corresponding to Human K Cadherin/CDH6 (internal sequence). (BC000019) Database link: <a href="#">P55285-2</a>
<b>Positive control</b>	HeLa, A549 and HT29 cell lysates; Human liver cancer tissue lysate. Human brain tissue.
<b>General notes</b>	<p>The Life Science industry has been in the grips of a reproducibility crisis for a number of years. Abcam is leading the way in addressing this with our range of recombinant monoclonal antibodies and knockout edited cell lines for gold-standard validation. Please check that this product meets your needs before purchasing.</p> <p>If you have any questions, special requirements or concerns, please send us an inquiry and/or contact our Support team ahead of purchase. Recommended alternatives for this product can be found below, along with publications, customer reviews and Q&amp;As</p>

#### Properties

<b>Form</b>	Liquid
<b>Storage instructions</b>	Shipped at 4°C. Store at +4°C short term (1-2 weeks). Upon delivery aliquot. Store at -20°C long term. Avoid freeze / thaw cycle.
<b>Storage buffer</b>	pH: 7.4 Preservative: 0.05% Sodium azide Constituents: 50% Glycerol (glycerin, glycerine), 49% PBS
<b>Purity</b>	Immunogen affinity purified
<b>Clonality</b>	Polyclonal
<b>Isotype</b>	IgG

#### Applications

## The Abpromise guarantee

Our **Abpromise guarantee** covers the use of ab197845 in the following tested applications.

The application notes include recommended starting dilutions; optimal dilutions/concentrations should be determined by the end user.

Application	Abreviews	Notes
WB	★★★★★ (1)	1/500 - 1/2000. Predicted molecular weight: 74 kDa.
IHC-P		1/50 - 1/200.

## Target

### Function

Cadherins are calcium dependent cell adhesion proteins. They preferentially interact with themselves in a homophilic manner in connecting cells; cadherins may thus contribute to the sorting of heterogeneous cell types.

### Tissue specificity

Highly expressed in brain, cerebellum, and kidney. Lung, pancreas, and gastric mucosa show a weak expression. Also expressed in certain liver and kidney carcinomas.

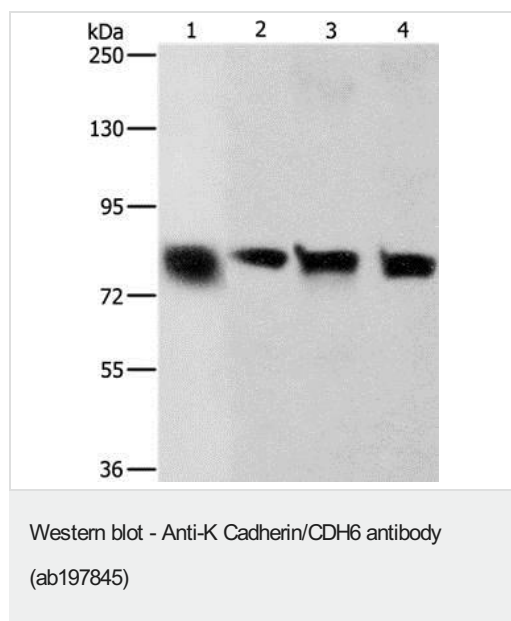
### Sequence similarities

Contains 5 cadherin domains.

### Cellular localization

Cell membrane.

## Images



**All lanes** : Anti-K Cadherin/CDH6 antibody (ab197845) at 1/500 dilution

**Lane 1** : HeLa cell lysate

**Lane 2** : A549 cell lysate

**Lane 3** : Human liver cancer tissue lysate

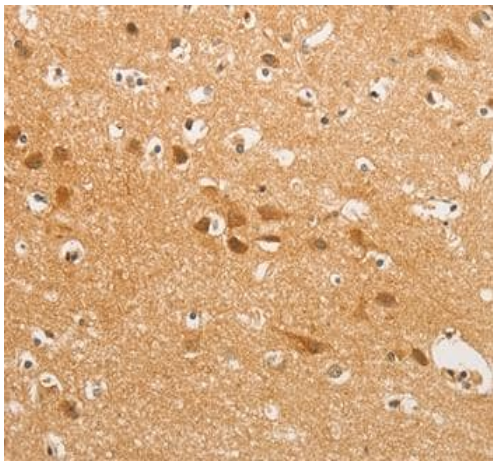
**Lane 4** : HT29 cell lysate

Lysates/proteins at 40 µg per lane.

**Predicted band size:** 74 kDa

**Exposure time:** 2 minutes

Gel: 8%SDS-PAGE



Immunohistochemical analysis of paraffin-embedded Human brain tissue labeling K Cadherin/CDH6 with ab197845 at 1/50 dilution.

Immunohistochemistry (Formalin/PFA-fixed paraffin-embedded sections) - Anti-K Cadherin/CDH6 antibody (ab197845)

**Please note:** All products are "FOR RESEARCH USE ONLY. NOT FOR USE IN DIAGNOSTIC PROCEDURES"

### Our Abpromise to you: Quality guaranteed and expert technical support

---

- Replacement or refund for products not performing as stated on the datasheet
- Valid for 12 months from date of delivery
- Response to your inquiry within 24 hours
- We provide support in Chinese, English, French, German, Japanese and Spanish
- Extensive multi-media technical resources to help you
- We investigate all quality concerns to ensure our products perform to the highest standards

If the product does not perform as described on this datasheet, we will offer a refund or replacement. For full details of the Abpromise, please visit <https://www.abcam.com/abpromise> or contact our technical team.

### Terms and conditions

---

- Guarantee only valid for products bought direct from Abcam or one of our authorized distributors