


## Product datasheet

### Anti-K31 antibody ab111730

2 Images

#### Overview

Product name	Anti-K31 antibody
Description	Rabbit polyclonal to K31
Host species	Rabbit
Tested applications	<b>Suitable for:</b> WB, ICC/IF
Species reactivity	<b>Reacts with:</b> Human <b>Predicted to work with:</b> Mouse, Rat, Cow 
Immunogen	Recombinant fragment corresponding to Human K31 aa 175-381. Database link: <a href="#">Q15323</a>
Positive control	HeLa whole cell lysate; HeLa cells
General notes	<p>The Life Science industry has been in the grips of a reproducibility crisis for a number of years. Abcam is leading the way in addressing this with our range of recombinant monoclonal antibodies and knockout edited cell lines for gold-standard validation. Please check that this product meets your needs before purchasing.</p> <p>If you have any questions, special requirements or concerns, please send us an inquiry and/or contact our Support team ahead of purchase. Recommended alternatives for this product can be found below, along with publications, customer reviews and Q&amp;As</p>

#### Properties

Form	Liquid
Storage instructions	Shipped at 4°C. Upon delivery aliquot and store at -20°C or -80°C. Avoid repeated freeze / thaw cycles.
Storage buffer	pH: 7.00 Preservative: 0.01% Thimerosal (merthiolate) Constituents: 1.21% Tris, 0.75% Glycine, 20% Glycerol (glycerin, glycerine)
Purity	Immunogen affinity purified
Clonality	Polyclonal
Isotype	IgG

#### Applications

## The Abpromise guarantee

Our **Abpromise guarantee** covers the use of ab111730 in the following tested applications.

The application notes include recommended starting dilutions; optimal dilutions/concentrations should be determined by the end user.

Application	Abreviews	Notes
WB		1/1000 - 1/10000. Predicted molecular weight: 47 kDa.
ICC/IF		1/100 - 1/500.

## Target

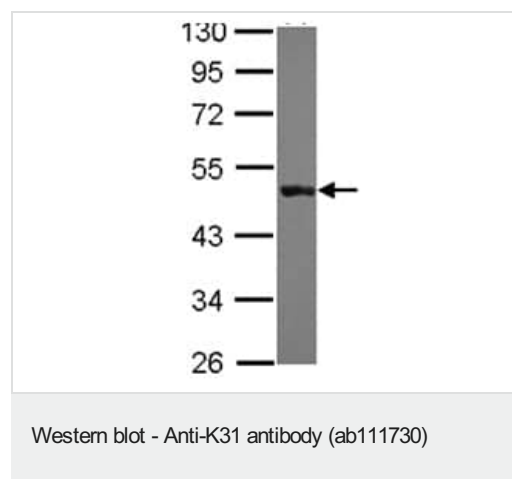
### Tissue specificity

Present in scalp but not in hairless skin. Abundantly expressed in the differentiating cortex of growing (anagen) hair. Expression is restricted to the keratinocytes of the hair cortex and is absent from inner root sheath and medulla.

### Sequence similarities

Belongs to the intermediate filament family.

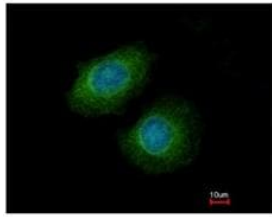
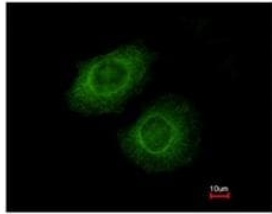
## Images



Anti-K31 antibody (ab111730) at 1/5000 dilution + HeLa whole cell lysate at 30 µg

**Predicted band size:** 47 kDa

10% SDS PAGE



Immunofluorescence analysis of K31 in methanol-fixed HeLa cells, using ab111730 at a 1/200 dilution. The lower image shows the cells counter stained with Hoechst 33342.

Immunocytochemistry/ Immunofluorescence - Anti-K31 antibody (ab111730)

**Please note:** All products are "FOR RESEARCH USE ONLY. NOT FOR USE IN DIAGNOSTIC PROCEDURES"

### Our Abpromise to you: Quality guaranteed and expert technical support

- Replacement or refund for products not performing as stated on the datasheet
- Valid for 12 months from date of delivery
- Response to your inquiry within 24 hours
- We provide support in Chinese, English, French, German, Japanese and Spanish
- Extensive multi-media technical resources to help you
- We investigate all quality concerns to ensure our products perform to the highest standards

If the product does not perform as described on this datasheet, we will offer a refund or replacement. For full details of the Abpromise, please visit <https://www.abcam.com/abpromise> or contact our technical team.

### Terms and conditions

- Guarantee only valid for products bought direct from Abcam or one of our authorized distributors