




Product datasheet

Anti-K33A antibody ab233139

9 Images

Overview

Product name	Anti-K33A antibody
Description	Rabbit polyclonal to K33A
Host species	Rabbit
Tested applications	Suitable for: WB, IHC-P
Species reactivity	Reacts with: Mouse, Human Predicted to work with: Chimpanzee 
Immunogen	Recombinant fragment (His-T7-tag) corresponding to Human K33A aa 50-400. Expressed in E.coli. Database link: O76009  Run BLAST with  Run BLAST with
Positive control	WB: Recombinant human K33A protein; Human lung lysate; Mouse testis lysate. IHC-P: Human prostate cancer, kidney, cerebrum, glioma, liver and liver cancer tissue.
General notes	<p>The Life Science industry has been in the grips of a reproducibility crisis for a number of years. Abcam is leading the way in addressing this with our range of recombinant monoclonal antibodies and knockout edited cell lines for gold-standard validation. Please check that this product meets your needs before purchasing.</p> <p>If you have any questions, special requirements or concerns, please send us an inquiry and/or contact our Support team ahead of purchase. Recommended alternatives for this product can be found below, along with publications, customer reviews and Q&As</p>

Properties

Form	Liquid
Storage instructions	Shipped at 4°C. Store at +4°C short term (1-2 weeks). Upon delivery aliquot. Store at -20°C long term. Avoid freeze / thaw cycle.
Storage buffer	pH: 7.40 Preservative: 0.011% Proclin 300 Constituents: 55.77% Glycerol (glycerin, glycerine), 44.219% PBS
Purity	Immunogen affinity purified
Purification notes	Antigen-specific affinity chromatography followed by Protein A affinity chromatography.
Clonality	Polyclonal

Isotype

IgG

Applications

The Abpromise guarantee

Our **Abpromise guarantee** covers the use of ab233139 in the following tested applications.

The application notes include recommended starting dilutions; optimal dilutions/concentrations should be determined by the end user.

Application	Abreviews	Notes
WB		Use a concentration of 0.2 - 2 µg/ml. Predicted molecular weight: 46 kDa.
IHC-P		Use a concentration of 5 - 20 µg/ml.

Target

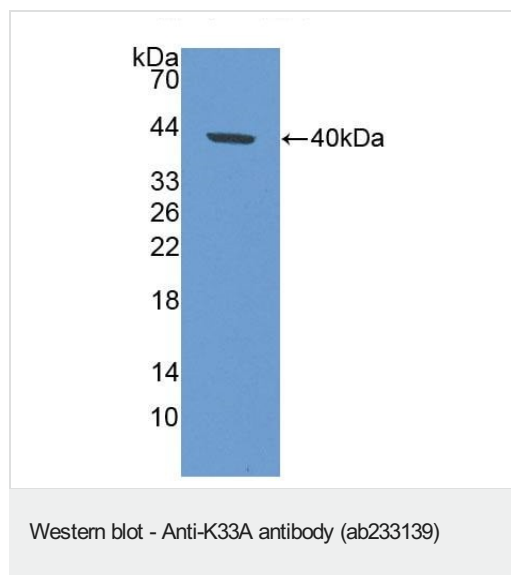
Tissue specificity

Expressed in the hair follicles.

Sequence similarities

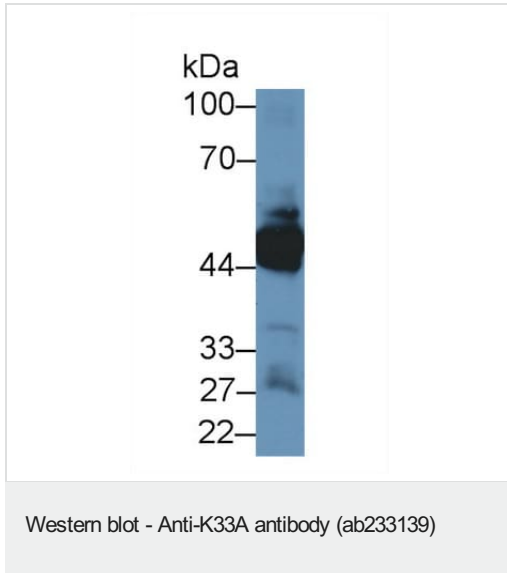
Belongs to the intermediate filament family.

Images



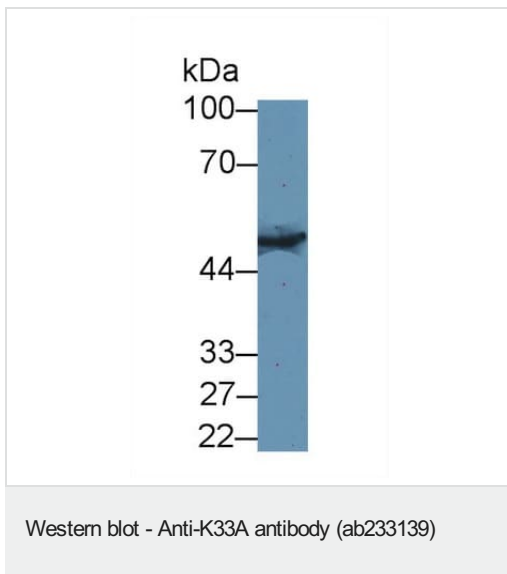
Anti-K33A antibody (ab233139) at 2 µg + Recombinant human K33A protein

Predicted band size: 46 kDa



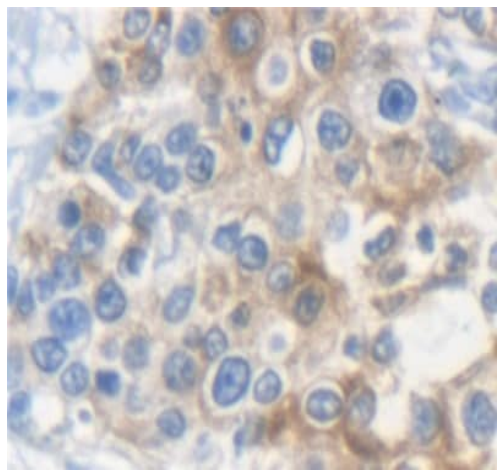
Anti-K33A antibody (ab233139) at 1 μ g/ml + Human lung lysate

Predicted band size: 46 kDa



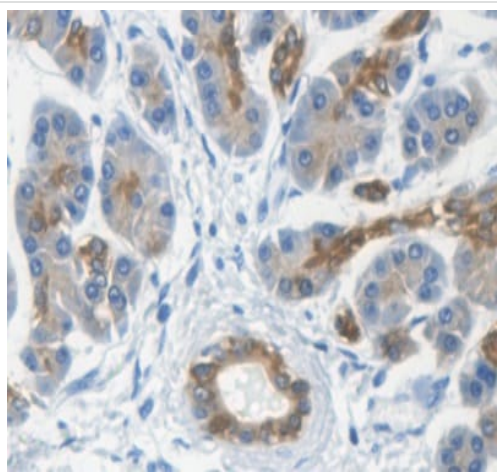
Anti-K33A antibody (ab233139) at 1 μ g + Mouse testis lysate

Predicted band size: 46 kDa



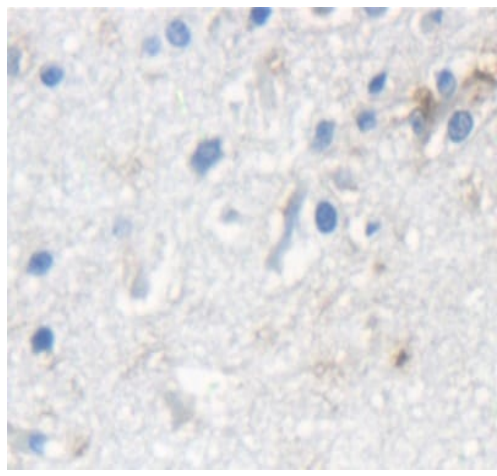
Formalin-fixed, paraffin-embedded human prostate cancer tissue stained for K33A using ab233139 at 20 $\mu\text{g/ml}$ in immunohistochemical analysis. DAB staining.

Immunohistochemistry (Formalin/PFA-fixed paraffin-embedded sections) - Anti-K33A antibody (ab233139)



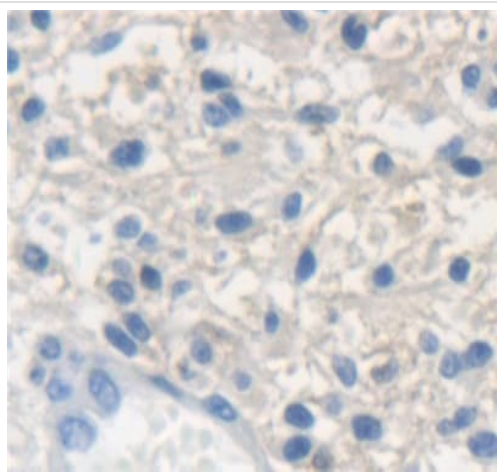
Formalin-fixed, paraffin-embedded human kidney tissue stained for K33A using ab233139 at 20 $\mu\text{g/ml}$ in immunohistochemical analysis. DAB staining.

Immunohistochemistry (Formalin/PFA-fixed paraffin-embedded sections) - Anti-K33A antibody (ab233139)



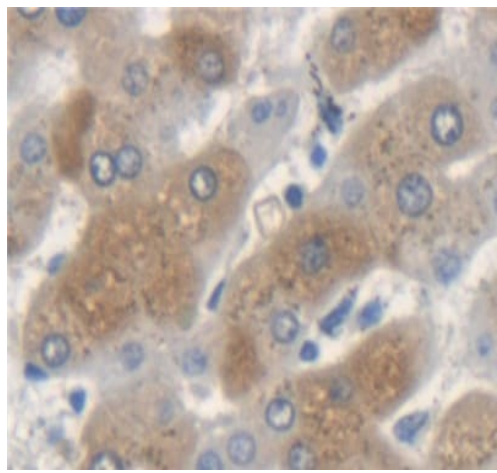
Formalin-fixed, paraffin-embedded human cerebrum tissue stained for K33A using ab233139 at 20 µg/ml in immunohistochemical analysis. DAB staining.

Immunohistochemistry (Formalin/PFA-fixed paraffin-embedded sections) - Anti-K33A antibody (ab233139)



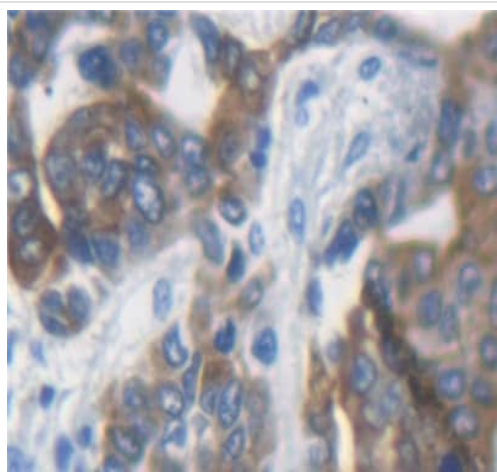
Formalin-fixed, paraffin-embedded human glioma tissue stained for K33A using ab233139 at 20 µg/ml in immunohistochemical analysis. DAB staining.

Immunohistochemistry (Formalin/PFA-fixed paraffin-embedded sections) - Anti-K33A antibody (ab233139)



Formalin-fixed, paraffin-embedded human liver tissue stained for K33A using ab233139 at 20 µg/ml in immunohistochemical analysis. DAB staining.

Immunohistochemistry (Formalin/PFA-fixed paraffin-embedded sections) - Anti-K33A antibody (ab233139)



Formalin-fixed, paraffin-embedded human liver cancer tissue stained for K33A using ab233139 at 20 µg/ml in immunohistochemical analysis. DAB staining.

Immunohistochemistry (Formalin/PFA-fixed paraffin-embedded sections) - Anti-K33A antibody (ab233139)

Please note: All products are "FOR RESEARCH USE ONLY. NOT FOR USE IN DIAGNOSTIC PROCEDURES"

Our Abpromise to you: Quality guaranteed and expert technical support

- Replacement or refund for products not performing as stated on the datasheet
- Valid for 12 months from date of delivery
- Response to your inquiry within 24 hours

- We provide support in Chinese, English, French, German, Japanese and Spanish
- Extensive multi-media technical resources to help you
- We investigate all quality concerns to ensure our products perform to the highest standards

If the product does not perform as described on this datasheet, we will offer a refund or replacement. For full details of the Abpromise, please visit <https://www.abcam.com/abpromise> or contact our technical team.

Terms and conditions

- Guarantee only valid for products bought direct from Abcam or one of our authorized distributors