



## Product datasheet

# Anti-Kallikrein 10/K10 antibody ab229968

3 Images

### Overview

<b>Product name</b>	Anti-Kallikrein 10/K10 antibody
<b>Description</b>	Rabbit polyclonal to Kallikrein 10/K10
<b>Host species</b>	Rabbit
<b>Tested applications</b>	<b>Suitable for:</b> WB, IHC-P
<b>Species reactivity</b>	<b>Reacts with:</b> Human
<b>Immunogen</b>	Recombinant fragment corresponding to Human Kallikrein 10/K10 aa 1 to the C-terminus. Database link: <a href="#">O43240</a>
	 <a href="#">Run BLAST with</a>  <a href="#">Run BLAST with</a>
<b>Positive control</b>	WB: THP-1 whole cell lysate. IHC-P: Human pancreatic and prostate cancer tissues.
<b>General notes</b>	<p>The Life Science industry has been in the grips of a reproducibility crisis for a number of years. Abcam is leading the way in addressing this with our range of recombinant monoclonal antibodies and knockout edited cell lines for gold-standard validation. Please check that this product meets your needs before purchasing.</p> <p>If you have any questions, special requirements or concerns, please send us an inquiry and/or contact our Support team ahead of purchase. Recommended alternatives for this product can be found below, along with publications, customer reviews and Q&amp;As</p>

### Properties

<b>Form</b>	Liquid
<b>Storage instructions</b>	Shipped at 4°C. Store at +4°C short term (1-2 weeks). Upon delivery aliquot. Store at -20°C long term. Avoid freeze / thaw cycle.
<b>Storage buffer</b>	pH: 7.30 Preservative: 0.02% Sodium azide Constituents: PBS, 50% Glycerol (glycerin, glycerine)
<b>Purity</b>	Immunogen affinity purified
<b>Clonality</b>	Polyclonal
<b>Isotype</b>	IgG

### Applications

## The Abpromise guarantee

Our **Abpromise guarantee** covers the use of ab229968 in the following tested applications.

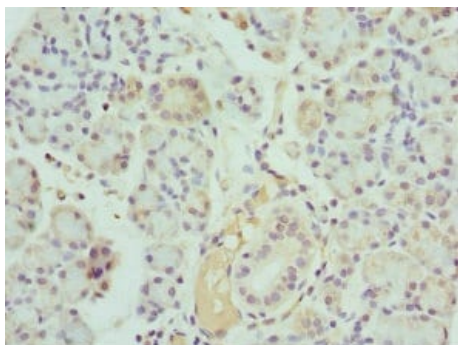
The application notes include recommended starting dilutions; optimal dilutions/concentrations should be determined by the end user.

Application	Abreviews	Notes
WB		1/1000 - 1/5000. Predicted molecular weight: 30 kDa.
IHC-P		1/20 - 1/200.

## Target

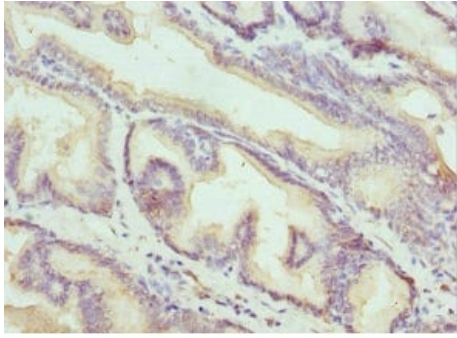
Function	Has a tumor-suppressor role for NES1 in breast and prostate cancer.
Tissue specificity	Expressed in breast, ovary and prostate.
Sequence similarities	Belongs to the peptidase S1 family. Kallikrein subfamily. Contains 1 peptidase S1 domain.
Developmental stage	Down-regulated during breast cancer progression.
Cellular localization	Secreted.

## Images



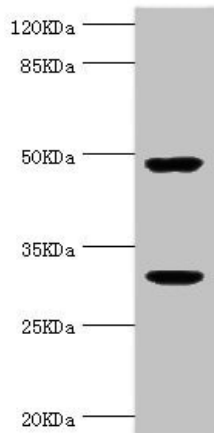
Paraffin-embedded human pancreatic tissue stained for Kallikrein 10/K10 using ab229968 at 1/100 dilution in immunohistochemical analysis.

Immunohistochemistry (Formalin/PFA-fixed paraffin-embedded sections) - Anti-Kallikrein 10/K10 antibody (ab229968)



Paraffin-embedded human prostate cancer tissue stained for Kallikrein 10/K10 using ab229968 at 1/100 dilution in immunohistochemical analysis.

Immunohistochemistry (Formalin/PFA-fixed paraffin-embedded sections) - Anti-Kallikrein 10/K10 antibody (ab229968)



Anti-Kallikrein 10/K10 antibody (ab229968) at 1/1000 dilution + THP-1 (human monocytic leukemia cell line) whole cell lysate

### Secondary

Goat polyclonal to rabbit at 1/10000 dilution

**Predicted band size:** 30 kDa

Western blot - Anti-Kallikrein 10/K10 antibody (ab229968)

**Please note:** All products are "FOR RESEARCH USE ONLY. NOT FOR USE IN DIAGNOSTIC PROCEDURES"

### Our Abpromise to you: Quality guaranteed and expert technical support

- Replacement or refund for products not performing as stated on the datasheet
- Valid for 12 months from date of delivery
- Response to your inquiry within 24 hours
- We provide support in Chinese, English, French, German, Japanese and Spanish
- Extensive multi-media technical resources to help you
- We investigate all quality concerns to ensure our products perform to the highest standards

If the product does not perform as described on this datasheet, we will offer a refund or replacement. For full details of the Abpromise, please visit <https://www.abcam.com/abpromise> or contact our technical team.

### Terms and conditions

- Guarantee only valid for products bought direct from Abcam or one of our authorized distributors